

DAILY REPORT



For more information, email trading_sales@tsx.com

January 12, 2026

Indices	January 12 Close	Previous Close	Change	% Change
S&P/TSX Composite Index	32,874.70	32,612.93		0.80 %
S&P/TSX 60 Index	1,917.46	1,906.71		0.56 %
S&P/TSX Venture Composite	1,091.37	1,052.18		3.72 %
S&P/TSX Completion Index	2,204.18	2,166.21		1.75 %
S&P/TSX Smallcap Index	1,286.15	1,260.03		2.07 %

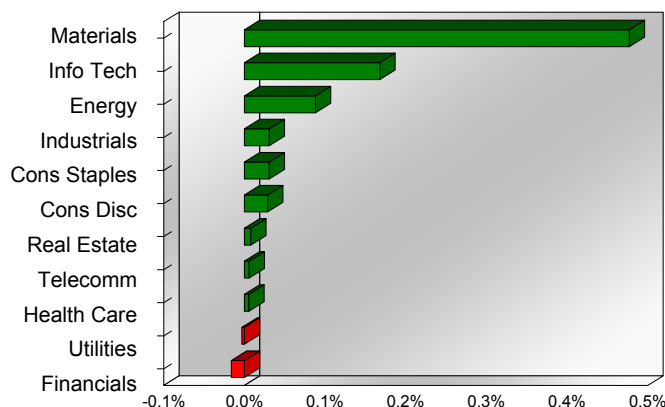
S&P/TSX Composite Index		
Advancers	Decliners	Unchanged
163	53	2

S&P/TSX Composite Index			
Top 10 Index Contributors		Top 10 Index Detractors	
Constituent	Index Contribution	Constituent	Index Contribution
SHOP	34.59	TD	-6.09
K	20.08	MFC	-5.33
ABX	19.41	NA	-3.34
WPM	14.86	EMA	-3.31
AEM	13.75	SU	-3.06
CLS	13.51	NTR	-3.02
CCO	8.20	SLF	-2.53
BMO	6.86	GIL	-2.37
AG	5.89	IFC	-2.24
FM	5.69	RY	-2.04

S&P/TSX Composite Index			
Top 10 Advancers		Top 10 Decliners	
Constituent	Return	Constituent	Return
AYA	12.02%	EMA	-2.40%
CURA	8.00%	EIF	-2.22%
BITF	7.95%	GIL	-2.14%
LAC	6.68%	TA	-1.86%
AG	6.58%	WPK	-1.38%
EFR	5.82%	CCL.B	-1.29%
ERO	5.78%	NTR	-1.09%
SVM	5.48%	GSY	-0.99%
K	5.25%	ONEX	-0.99%
TXG	5.24%	X	-0.91%

S&P/TSX Composite Index				
Sector	# of Index Constituents	Weight	Market Cap (\$B)	Index Contribution
Materials	56	19.49 %	\$916.96	155.67
Information Technology	10	9.82 %	\$461.86	54.72
Energy	38	14.49 %	\$681.62	28.64
Industrials	29	10.33 %	\$486.15	10.04
Consumer Staples	10	3.25 %	\$153.14	9.98
Consumer Discretionary	9	3.29 %	\$154.70	9.43
Real Estate	19	1.51 %	\$71.24	2.55
Communication Services	5	1.90 %	\$89.27	1.94
Health Care	4	0.27 %	\$12.78	1.79
Utilities	14	3.29 %	\$154.71	-1.00
Financials	24	32.36 %	\$1,522.60	-5.27
S&P/TSX Composite Index	218	100.00 %	\$4,705.03	268.49

S&P/TSX Composite Index - Sectors Returns



This report is published by TSX Inc. TSX Inc. does not guarantee either the completeness or the accuracy of this information. The information contained in this report is provided for informational purposes only and you agree not to rely upon the information contained in this report for any trading, business or financial purpose. These sheets are printed in Canada and issued by TSX Inc. under the express condition, to which everyone receiving or making use thereof assents, that no liability shall be incurred by TSX Inc. or its affiliated companies or any other vendor or donor, including, without limitation, for reliance on or for any errors or inaccuracies in this report. Neither TMX Group Limited, TSX Inc., nor any of their affiliated companies, guarantees the completeness of the information contained in this document and are not responsible for any errors or omission in or your use of, or reliance on, the information. This publication is under copyright. © 2016 TSX Inc. All rights reserved. Do not copy, distribute, sell or modify this publication without the prior written consent of TSX Inc.

<http://www.tsx.com/trading>

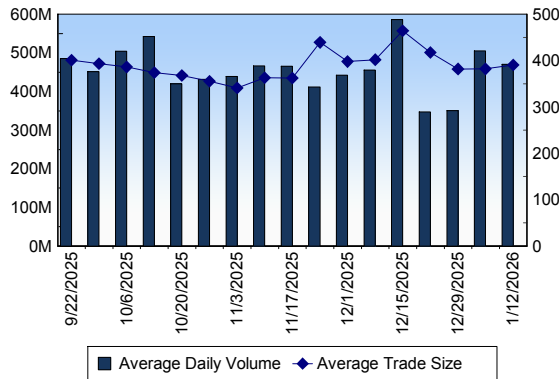
TSX

Daily Volume	470,097,090
Daily Value	\$18,910,976,289
Daily Trades	1,203,194
Daily Symbols Traded	2,470

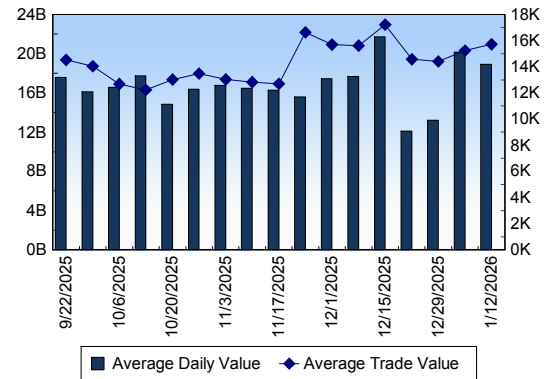
TSX ANONYMOUS TRADING

Daily Volume	232,108,113
Daily Value	\$9,061,176,131
Average Trade Size	385
% TSX Volume	49.37 %

TSX Volume



TSX Value (in Canadian Dollars)



Top 20 TSX Symbols by Volume

Symbol	TSX Volume	TSX Value
CNQ	17,257,492	\$773,098,232
CVE	10,874,580	\$250,814,176
MFC	7,662,064	\$395,127,773
SU	7,471,855	\$483,391,954
TD	7,127,121	\$929,824,400
ENB	7,101,726	\$452,094,225
TRP	6,951,953	\$519,404,307
BTO	6,814,546	\$44,722,081
CS	5,413,241	\$75,356,124
BITF	5,349,912	\$21,816,684
FF	5,236,662	\$3,049,175
ABX	5,164,479	\$352,784,012
T	4,900,712	\$91,492,130
K	4,628,236	\$210,844,727
CM	4,508,169	\$571,847,526
ATH	4,501,064	\$30,398,236
RY	4,127,551	\$970,469,949
WEED	4,022,985	\$6,883,889
BTE	4,017,509	\$18,834,301
DSV	3,909,857	\$35,522,256

Top 20 TSX Symbols by Value

Symbol	TSX Volume	TSX Value
RY	4,127,551	\$970,469,949
TD	7,127,121	\$929,824,400
CNQ	17,257,492	\$773,098,232
FFH	236,170	\$618,666,639
CM	4,508,169	\$571,847,526
TRP	6,951,953	\$519,404,307
SU	7,471,855	\$483,391,954
BMO	2,517,315	\$467,386,895
ENB	7,101,726	\$452,094,225
SHOP	1,907,770	\$440,351,463
MFC	7,662,064	\$395,127,773
BNS	3,653,077	\$366,484,292
ABX	5,164,479	\$352,784,012
AEM	1,272,152	\$345,307,648
CCO	2,042,981	\$311,139,916
CLS	597,048	\$258,245,764
CVE	10,874,580	\$250,814,176
EMA	3,511,471	\$233,033,964
POW	3,036,831	\$222,838,332
K	4,628,236	\$210,844,727

ETF Trading

Daily Volume	59,240,649	Average Trade Value	\$10,374
Daily Value	\$1,695,483,273	Average Trade Size	362
# Trades	163,435	# of ETFs Traded	1,441

Top 10 ETFs by TSX Volume

Symbol	Market Volume	Market Value
HND	3,729,423	\$33,062,476
HNU	3,708,428	\$48,018,535
XIU	2,213,132	\$107,060,641
ZEB	1,817,992	\$107,294,269
XEG	1,817,000	\$34,927,424
SLVD	1,677,297	\$9,105,514
DLR	1,433,639	\$20,180,821
DLR.U	1,148,364	\$11,649,980
HOD	855,685	\$4,608,789
XEQT	713,238	\$29,492,479

Top 10 ETFs by TSX Value

Symbol	Market Volume	Market Value
ZEB	1,817,992	\$107,294,269
XIU	2,213,132	\$107,060,641
VFV	292,501	\$50,114,993
HNU	3,708,428	\$48,018,535
SLVU	297,888	\$46,437,056
XGD	692,124	\$40,213,529
XEG	1,817,000	\$34,927,424
XIC	639,522	\$33,504,413
HND	3,729,423	\$33,062,476
XEQT	713,238	\$29,492,479

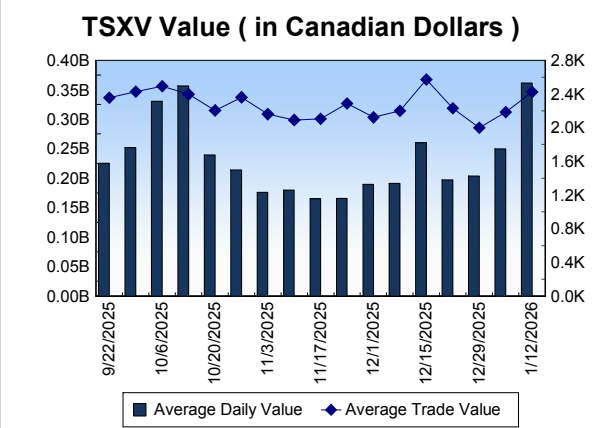
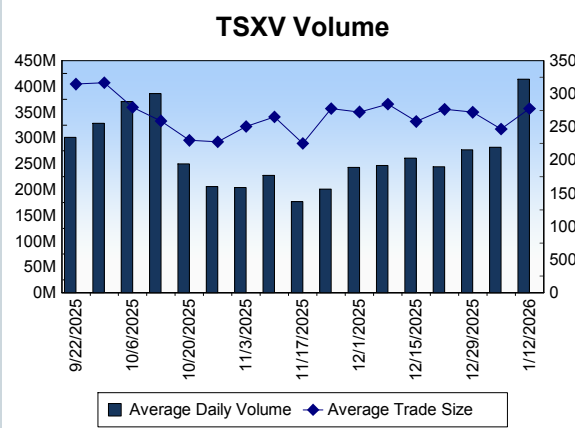
Block Trades	Non Block Trades
1,898	1,201,296

Top 5 Block Trade Brokers by Volume	
Broker	TSX Block Volume
RBC CAPITAL MARKETS	43,629,400
BMO NESBITT BURNS INC.	26,101,070
TD SECURITIES INC.	24,723,400
GOLDMAN SACHS CANADA I	24,178,300
INSTINET CANADA LTD.	18,726,800

Top 5 Block Trade Symbols by Volume	
Symbol	TSX Block Volume
CNQ	13,903,100
CVE	6,893,600
TRP	5,767,900
MFC	5,740,900
SU	4,876,500

TSXV	
Daily Volume	413,933,490
Daily Value	\$361,392,789
Daily Trades	149,032
Daily Symbols Traded	1,222

TSXV ANONYMOUS TRADING	
Daily Volume	242,474,890
Daily Value	\$226,411,572
Average Trade Size	2,986
% TSXV Volume	58.58%



Top 20 TSXV Symbols by Volume		
Symbol	TSXV Volume	TSXV Value
MJS	10,308,324	\$2,167,974
SHL	7,545,258	\$1,400,792
CH	7,484,080	\$1,183,200
OCO	5,273,751	\$3,210,053
WRLG	4,995,932	\$5,491,626
NBLC	4,906,261	\$400,643
BBB	4,747,651	\$282,486
DEC	4,653,209	\$408,195
SLVR	4,388,455	\$4,298,095
IPT	4,128,992	\$1,901,904
WGO	3,775,608	\$5,004,761
GSVR	3,693,293	\$2,752,196
DEF	3,600,532	\$994,119
PNG	3,445,184	\$28,460,168
SIG	3,419,739	\$3,118,240
GRSL	3,261,131	\$1,495,190
FG	3,137,886	\$63,073
NILI	3,131,550	\$3,090,948
MGG	3,091,561	\$1,689,340
SVRS	3,071,823	\$1,664,647

Top 20 TSXV Symbols by Value		
Symbol	TSXV Volume	TSXV Value
PNG	3,445,184	\$28,460,168
SCZ	1,045,721	\$16,468,131
ARTG	327,439	\$12,743,523
HIVE	2,092,040	\$9,416,958
TOI	50,836	\$6,356,301
UCU	801,828	\$6,291,961
LMN	213,880	\$5,571,268
WRLG	4,995,932	\$5,491,626
WGO	3,775,608	\$5,004,761
NFG	1,092,733	\$4,829,853
CNC	2,418,611	\$4,442,925
SLVR	4,388,455	\$4,298,095
AMRQ	1,775,987	\$4,166,020
ITR	673,777	\$3,894,281
QNC	799,057	\$3,771,467
BRC	2,261,503	\$3,293,648
NEXG	1,827,218	\$3,266,364
GSKR	1,299,413	\$3,233,090
OMG	2,142,805	\$3,211,292
OCO	5,273,751	\$3,210,053

Dark TSX/TSXV Trading			
Volume	48,716,710	Daily Trades	192,931
Value	1,621,491,721	Daily Symbols Traded	1,840