

DAILY REPORT



For more information, email trading_sales@tsx.com

July 15, 2025

Indices	July 15 Close	Previous Close	Change	% Change
S&P/TSX Composite Index	27,054.14	27,198.85		-0.53 %
S&P/TSX 60 Index	1,606.77	1,616.45		-0.60 %
S&P/TSX Venture Composite	782.77	786.54		-0.48 %
S&P/TSX Completion Index	1,692.05	1,696.64		-0.27 %
S&P/TSX Smallcap Index	932.39	935.66		-0.35 %

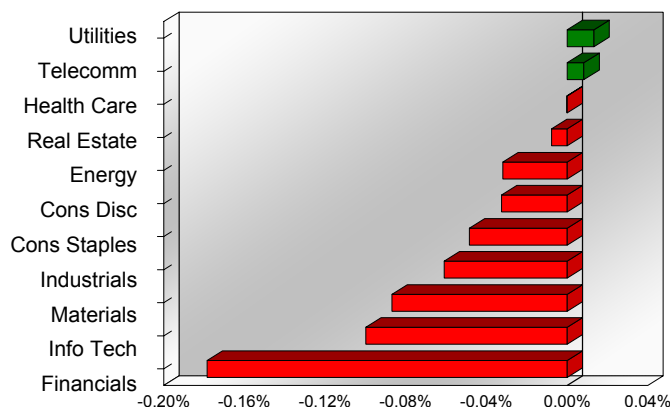
S&P/TSX Composite Index		
Advancers	Decliners	Unchanged
58	152	3

S&P/TSX Composite Index			
Top 10 Index Contributors		Top 10 Index Detractors	
Constituent	Index Contribution	Constituent	Index Contribution
BEP.UN	3.50	SHOP	-17.65
CCO	3.34	RY	-12.63
TRP	2.79	CNQ	-8.71
ENB	2.77	TD	-7.34
BCE	2.12	BN	-6.50
X	1.87	CSU	-6.28
EFR	1.74	DOL	-5.64
IVN	1.50	IFC	-5.08
OLA	1.17	TRI	-4.69
ALA	1.13	BMO	-4.40

S&P/TSX Composite Index			
Top 10 Advancers		Top 10 Decliners	
Constituent	Return	Constituent	Return
EFR	10.74%	RCH	-3.32%
BEP.UN	6.27%	TVE	-2.75%
OLA	4.92%	PSI	-2.60%
BDGI	3.79%	EQX	-2.55%
IVN	2.74%	AG	-2.31%
PSK	2.38%	ARE	-2.27%
NFI	1.92%	VET	-2.23%
LSPD	1.82%	WN	-2.08%
NPI	1.79%	WFG	-2.03%
X	1.69%	TECK.B	-2.02%

S&P/TSX Composite Index				
Sector	# of Index Constituents	Weight	Market Cap (\$B)	Index Contribution
Utilities	15	3.81 %	\$147.59	3.64
Communication Services	5	2.35 %	\$90.79	2.27
Health Care	3	0.25 %	\$9.54	-0.03
Real Estate	19	1.81 %	\$69.97	-2.08
Energy	40	15.95 %	\$617.30	-8.67
Consumer Discretionary	9	3.37 %	\$130.52	-8.85
Consumer Staples	10	3.66 %	\$141.73	-13.18
Industrials	29	13.05 %	\$505.25	-16.59
Materials	48	13.45 %	\$520.50	-23.61
Information Technology	10	9.71 %	\$375.99	-27.14
Financials	25	32.60 %	\$1,262.00	-48.57
S&P/TSX Composite Index	213	100.00 %	\$3,871.19	-142.81

S&P/TSX Composite Index - Sectors Returns



This report is published by TSX Inc. TSX Inc. does not guarantee either the completeness or the accuracy of this information. The information contained in this report is provided for informational purposes only and you agree not to rely upon the information contained in this report for any trading, business or financial purpose. These sheets are printed in Canada and issued by TSX Inc. under the express condition, to which everyone receiving or making use thereof assents, that no liability shall be incurred by TSX Inc. or its affiliated companies or any other vendor or donor, including, without limitation, for reliance on or for any errors or inaccuracies in this report. Neither TMX Group Limited, TSX Inc., nor any of their affiliated companies, guarantees the completeness of the information contained in this document and are not responsible for any errors or omission in or your use of, or reliance on, the information. This publication is under copyright. © 2016 TSX Inc. All rights reserved. Do not copy, distribute, sell or modify this publication without the prior written consent of TSX Inc.

<http://www.tsx.com/trading>

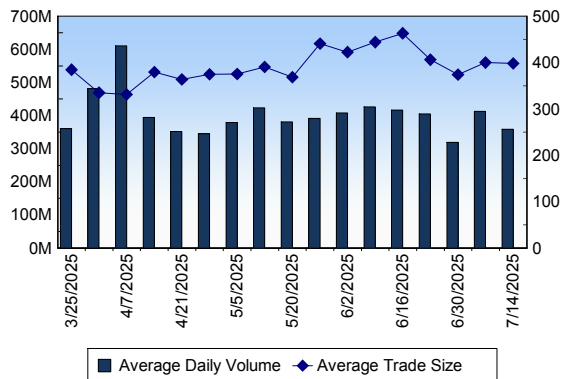
TSX

Daily Volume	355,897,037
Daily Value	\$12,768,592,104
Daily Trades	923,456
Daily Symbols Traded	2,182

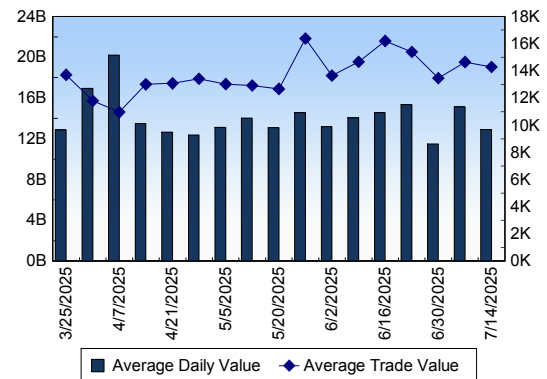
TSX ANONYMOUS TRADING

Daily Volume	176,903,429
Daily Value	\$6,219,171,931
Average Trade Size	360
% TSX Volume	49.71 %

TSX Volume



TSX Value (in Canadian Dollars)



Top 20 TSX Symbols by Volume

Symbol	TSX Volume	TSX Value
TD	13,715,910	\$1,387,790,893
CNQ	11,182,918	\$480,826,290
CVE	9,598,831	\$187,433,469
TRP	7,358,151	\$490,507,404
ENB	7,344,857	\$455,095,774
FF	6,547,667	\$1,166,116
BTE	5,772,444	\$15,023,935
RY	5,727,402	\$1,028,135,380
WCP	5,440,227	\$52,728,983
RCI.B	4,737,291	\$216,625,340
GMTN	4,586,345	\$23,038
HND	4,205,629	\$29,205,136
T	3,909,737	\$87,836,078
XIU	3,485,464	\$141,798,235
MER	3,407,842	\$5,600,919
BNS	3,321,947	\$248,442,192
DML	3,239,694	\$8,202,340
K	3,212,145	\$67,750,242
PPL	3,087,755	\$157,560,427
CM	2,972,181	\$293,797,195

Top 20 TSX Symbols by Value

Symbol	TSX Volume	TSX Value
TD	13,715,910	\$1,387,790,893
RY	5,727,402	\$1,028,135,380
TRP	7,358,151	\$490,507,404
CNQ	11,182,918	\$480,826,290
ENB	7,344,857	\$455,095,774
CM	2,972,181	\$293,797,195
BMO	1,802,720	\$279,012,833
BNS	3,321,947	\$248,442,192
SHOP	1,460,245	\$231,863,945
RCI.B	4,737,291	\$216,625,340
TRI	731,105	\$211,923,034
CVE	9,598,831	\$187,433,469
CSU.DB	1,461,000	\$171,325,500
CP	1,471,380	\$163,996,632
PPL	3,087,755	\$157,560,427
SU	2,737,361	\$148,260,036
CLS	661,579	\$146,247,227
CCO	1,372,657	\$142,037,093
XIU	3,485,464	\$141,798,235
AEM	748,656	\$121,915,475

ETF Trading

Daily Volume	42,404,687	Average Trade Value	\$11,448
Daily Value	\$1,047,092,266	Average Trade Size	464
# Trades	91,469	# of ETFs Traded	1,138

Top 10 ETFs by TSX Volume

Symbol	Market Volume	Market Value
HND	4,205,629	\$29,205,136
XIU	3,485,464	\$141,798,235
XEG	1,412,635	\$24,499,480
HNU	1,273,054	\$35,769,262
XGD	989,965	\$30,689,805
ZEB	870,518	\$40,331,818
NVDA	862,958	\$33,863,972
HHL	782,335	\$5,574,367
QQD	756,018	\$6,055,271
DLR	743,499	\$10,398,769

Top 10 ETFs by TSX Value

Symbol	Market Volume	Market Value
XIU	3,485,464	\$141,798,235
ZEB	870,518	\$40,331,818
HNU	1,273,054	\$35,769,262
NVDA	862,958	\$33,863,972
XGD	989,965	\$30,689,805
HND	4,205,629	\$29,205,136
VFV	163,509	\$24,924,658
XEG	1,412,635	\$24,499,480
TSLA	678,525	\$19,120,463
QQU	696,758	\$18,180,365

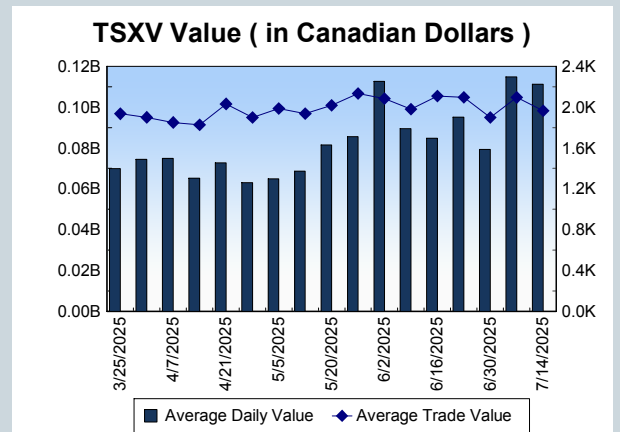
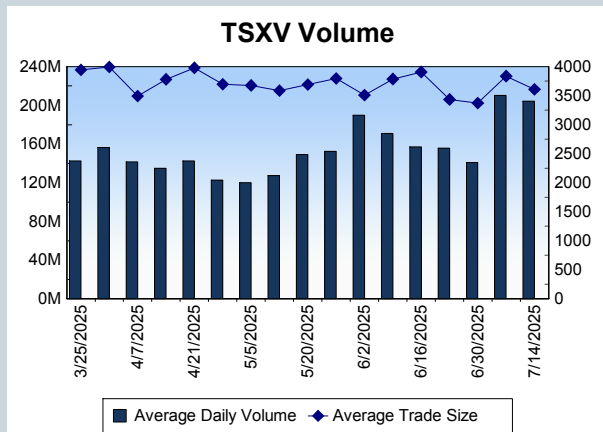
Block Trades	Non Block Trades
1,153	922,303

Top 5 Block Trade Brokers by Volume	
Broker	TSX Block Volume
BMO NESBITT BURNS INC.	35,477,100
RBC CAPITAL MARKETS	26,839,000
MERRILL LYNCH CANADA LT	12,338,900
GOLDMAN SACHS CANADA I	12,045,600
TD SECURITIES INC.	11,434,320

Top 5 Block Trade Symbols by Volume	
Symbol	TSX Block Volume
TD	11,116,600
CNQ	7,583,000
CVE	6,447,600
TRP	5,384,700
ENB	4,418,200

TSXV	
Daily Volume	174,902,937
Daily Value	\$103,750,291
Daily Trades	50,146
Daily Symbols Traded	1,046

TSXV ANONYMOUS TRADING	
Daily Volume	95,204,787
Daily Value	\$62,416,238
Average Trade Size	3,626
% TSXV Volume	54.43%



Top 20 TSXV Symbols by Volume		
Symbol	TSXV Volume	TSXV Value
FLT	8,207,027	\$6,473,478
MGM	3,686,075	\$284,804
SCD	3,474,600	\$69,636
ICM	3,260,203	\$233,756
DEF	2,766,901	\$690,756
SVRS	2,589,896	\$392,343
FFOX	2,404,645	\$101,369
BARU	2,340,152	\$278,942
SOI	1,976,838	\$146,383
CBIT	1,948,018	\$123,591
ARH	1,879,287	\$1,104,326
RUG	1,831,154	\$62,553
HIVE	1,706,461	\$5,121,496
VM	1,664,770	\$319,849
TAO	1,557,924	\$155,792
USCU	1,499,903	\$160,990
SSV	1,481,117	\$460,151
ROS	1,436,360	\$121,511
OCG	1,433,366	\$431,862
SOU	1,416,730	\$84,904

Top 20 TSXV Symbols by Value		
Symbol	TSXV Volume	TSXV Value
TOI	54,594	\$9,673,304
FLT	8,207,027	\$6,473,478
ARTG	212,391	\$5,589,770
HIVE	1,706,461	\$5,121,496
PNG	1,358,441	\$4,598,231
PTK	440,327	\$4,356,544
SGD	342,211	\$3,391,450
NURS	999,916	\$2,194,118
GSI	1,327,286	\$1,699,237
LMN	27,028	\$1,387,480
UCU	946,975	\$1,348,774
ARH	1,879,287	\$1,104,326
LQWD	251,840	\$1,085,416
QNC	652,052	\$1,031,986
SCZ	741,552	\$1,002,406
AAG	1,206,203	\$993,344
ATX	463,794	\$984,953
LUCA	607,854	\$907,065
EU	209,233	\$794,520
NCX	662,185	\$771,735

Dark TSX/TSXV Trading			
Volume	30,225,430	Daily Trades	127,384
Value	980,726,246	Daily Symbols Traded	1,529