

DAILY REPORT



For more information, email trading_sales@tsx.com

April 4, 2025

Indices	April 4 Close	Previous Close	Change	% Change
S&P/TSX Composite Index	23,193.47	24,335.77		-4.69 %
S&P/TSX 60 Index	1,397.90	1,462.84		-4.44 %
S&P/TSX Venture Composite	575.92	614.28		-6.25 %
S&P/TSX Completion Index	1,364.58	1,448.33		-5.78 %
S&P/TSX Smallcap Index	737.12	789.43		-6.63 %

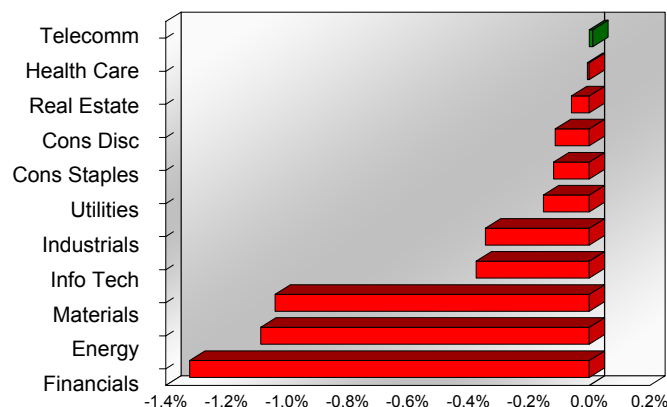
S&P/TSX Composite Index		
Advancers	Decliners	Unchanged
14	203	1

S&P/TSX Composite Index			
Top 10 Index Contributors		Top 10 Index Detractors	
Constituent	Index Contribution	Constituent	Index Contribution
CP	4.43	SHOP	-54.59
TFII	3.85	BN	-49.88
BCE	3.13	RY	-44.47
T	1.12	MFC	-42.71
ATZ	0.44	BMO	-41.66
TIH	0.42	CNQ	-40.58
CHP.UN	0.30	AEM	-38.90
JWEL	0.24	SU	-38.18
NWC	0.15	ENB	-33.03
RCH	0.14	WPM	-29.58

S&P/TSX Composite Index			
Top 10 Advancers		Top 10 Decliners	
Constituent	Return	Constituent	Return
TFII	5.84%	BTE	-17.14%
JWEL	2.50%	SES	-15.64%
ATZ	1.66%	VET	-15.55%
BCE	1.44%	NGD	-14.60%
RCH	1.12%	EFX	-12.74%
CHP.UN	1.07%	IMG	-12.73%
DOO	0.96%	AG	-12.68%
NWC	0.83%	MEG	-12.54%
CP	0.65%	ATH	-12.40%
TIH	0.62%	IVN	-11.92%

S&P/TSX Composite Index				
Sector	# of Index Constituents	Weight	Market Cap (\$B)	Index Contribution
Communication Services	5	2.50 %	\$82.54	2.94
Health Care	4	0.27 %	\$9.04	-1.58
Real Estate	19	1.90 %	\$62.95	-14.44
Consumer Discretionary	10	3.30 %	\$108.96	-27.30
Consumer Staples	10	4.17 %	\$137.77	-28.65
Utilities	15	4.09 %	\$135.30	-37.00
Industrials	28	12.63 %	\$417.66	-83.66
Information Technology	10	8.72 %	\$288.13	-91.11
Materials	50	13.06 %	\$431.86	-252.79
Energy	42	16.75 %	\$553.55	-264.24
Financials	25	32.61 %	\$1,077.87	-321.61
S&P/TSX Composite Index	218	100.00 %	\$3,305.64	-1,119.45

S&P/TSX Composite Index - Sectors Returns



This report is published by TSX Inc. TSX Inc. does not guarantee either the completeness or the accuracy of this information. The information contained in this report is provided for informational purposes only and you agree not to rely upon the information contained in this report for any trading, business or financial purpose. These sheets are printed in Canada and issued by TSX Inc. under the express condition, to which everyone receiving or making use thereof assents, that no liability shall be incurred by TSX Inc. or its affiliated companies or any other vendor or donor, including, without limitation, for reliance on or for any errors or inaccuracies in this report. Neither TMX Group Limited, TSX Inc., nor any of their affiliated companies, guarantees the completeness of the information contained in this document and are not responsible for any errors or omission in or your use of, or reliance on, the information. This publication is under copyright. © 2016 TSX Inc. All rights reserved. Do not copy, distribute, sell or modify this publication without the prior written consent of TSX Inc. <http://www.tsx.com/trading>

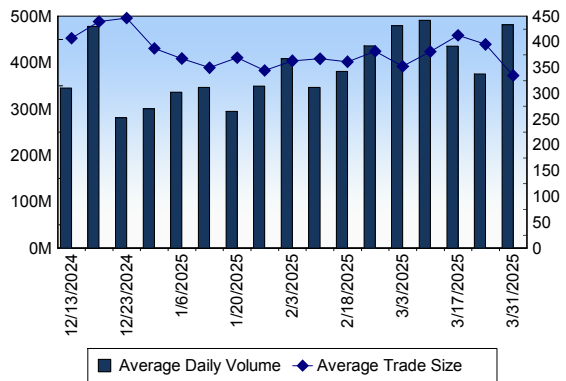
TSX

Daily Volume	754,311,785
Daily Value	\$24,930,247,935
Daily Trades	2,365,268
Daily Symbols Traded	2,305

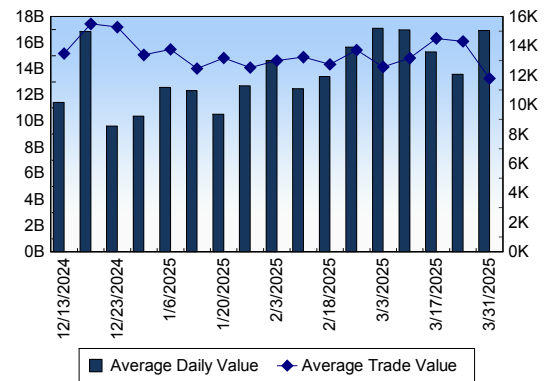
TSX ANONYMOUS TRADING

Daily Volume	363,418,276
Daily Value	\$12,986,906,687
Average Trade Size	302
% TSX Volume	48.18 %

TSX Volume



TSX Value (in Canadian Dollars)



Top 20 TSX Symbols by Volume

Symbol	TSX Volume	TSX Value
CNQ	22,744,136	\$889,790,862
XIU	16,734,753	\$596,237,831
BTE	14,144,551	\$33,733,302
TD	12,709,730	\$1,032,163,906
SU	12,128,791	\$574,562,178
WCP	11,863,422	\$92,163,442
MFC	11,653,071	\$463,518,739
XEG	11,050,386	\$168,304,529
BNS	10,728,304	\$714,819,316
TRP	10,680,059	\$699,415,624
POW	10,523,976	\$533,593,411
CVE	10,126,770	\$163,392,946
ENB	8,887,204	\$551,712,482
BMO	8,836,947	\$1,126,646,110
RY	8,777,013	\$1,388,570,993
VRN	8,266,804	\$65,405,375
CS	8,189,785	\$45,568,069
T	8,184,353	\$168,905,201
HND	8,084,332	\$45,185,246
ZEB	7,765,356	\$300,205,530

Top 20 TSX Symbols by Value

Symbol	TSX Volume	TSX Value
RY	8,777,013	\$1,388,570,993
BMO	8,836,947	\$1,126,646,110
TD	12,709,730	\$1,032,163,906
CNQ	22,744,136	\$889,790,862
BNS	10,728,304	\$714,819,316
TRP	10,680,059	\$699,415,624
XIU	16,734,753	\$596,237,831
SU	12,128,791	\$574,562,178
ENB	8,887,204	\$551,712,482
POW	10,523,976	\$533,593,411
SHOP	4,698,654	\$503,007,710
MFC	11,653,071	\$463,518,739
NA	3,776,390	\$427,338,646
CM	5,155,307	\$414,091,208
AEM	2,726,675	\$393,131,712
CNR	2,510,062	\$345,907,100
PPL	6,421,704	\$342,175,684
ZEB	7,765,356	\$300,205,530
BN	4,292,544	\$285,307,519
TOU	4,122,170	\$256,995,627

ETF Trading

Daily Volume	143,605,000	Average Trade Value	\$13,116
Daily Value	\$3,938,111,632	Average Trade Size	478
# Trades	300,244	# of ETFs Traded	1,208

Top 10 ETFs by TSX Volume

Symbol	Market Volume	Market Value
XIU	16,734,753	\$596,237,831
XEG	11,050,386	\$168,304,529
HND	8,084,332	\$45,185,246
ZEB	7,765,356	\$300,205,530
HOU	3,333,772	\$31,038,577
SPXU	3,174,257	\$60,555,688
QQD	2,822,667	\$40,364,669
NVDA	2,753,524	\$60,640,296
QQU	2,745,581	\$44,668,124
SPXD	2,361,548	\$47,556,977

Top 10 ETFs by TSX Value

Symbol	Market Volume	Market Value
XIU	16,734,753	\$596,237,831
ZEB	7,765,356	\$300,205,530
XEG	11,050,386	\$168,304,529
VFV	1,244,881	\$162,030,557
ZSP	1,575,696	\$126,404,104
XSP	2,102,267	\$112,511,243
HXT	1,462,979	\$90,414,063
XEF	1,975,465	\$73,988,946
NVDA	2,753,524	\$60,640,296
SPXU	3,174,257	\$60,555,688

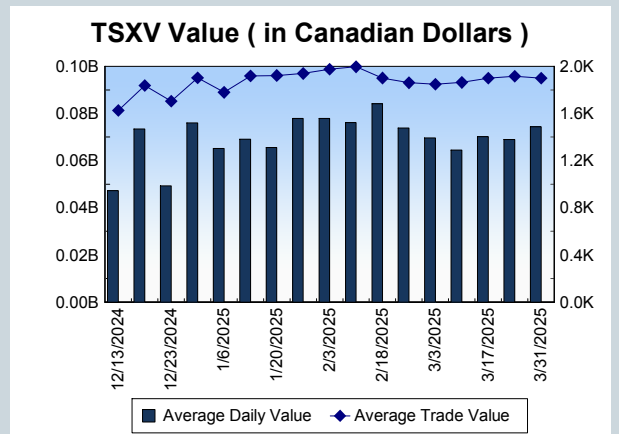
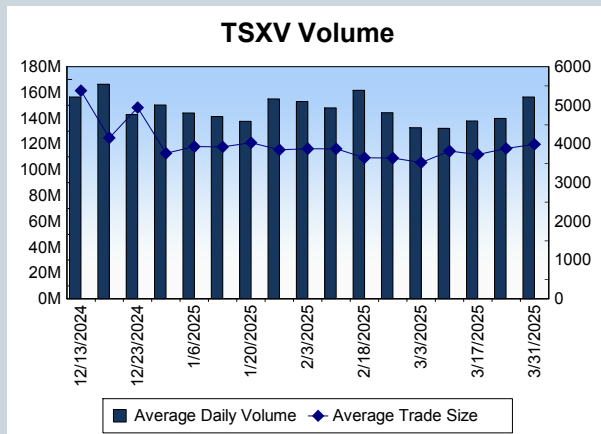
Block Trades	Non Block Trades
2,681	2,362,587

Top 5 Block Trade Brokers by Volume	
Broker	TSX Block Volume
RBC CAPITAL MARKETS	31,026,100
CIBC WORLD MARKETS INC.	29,224,700
BMO NESBITT BURNS INC.	28,125,800
TD SECURITIES INC.	24,811,600
NATIONAL BANK FINANCIAL	21,438,700

Top 5 Block Trade Symbols by Volume	
Symbol	TSX Block Volume
CNQ	12,292,700
POW	8,019,700
TD	6,854,100
TRP	5,915,600
SU	5,100,700

TSXV	
Daily Volume	197,176,697
Daily Value	\$101,122,559
Daily Trades	54,189
Daily Symbols Traded	1,076

TSXV ANONYMOUS TRADING	
Daily Volume	98,062,982
Daily Value	\$55,645,223
Average Trade Size	3,539
% TSXV Volume	49.73%



Top 20 TSXV Symbols by Volume		
Symbol	TSXV Volume	TSXV Value
QPM	4,093,000	\$143,355
MGM	2,710,377	\$203,982
WRLG	2,585,090	\$1,468,764
AAZ	2,272,385	\$48,493
FFU	1,966,991	\$83,828
AFM	1,793,715	\$977,954
VRR	1,757,501	\$32,535
GSVR	1,755,763	\$262,404
SSE	1,639,000	\$8,220
EVMT	1,566,318	\$14,123
SEI	1,557,792	\$794,809
FRI	1,524,000	\$38,110
THRM	1,504,404	\$30,088
LUCA	1,500,623	\$1,606,000
GXU	1,451,041	\$65,449
FKM	1,446,700	\$184,908
AAG	1,412,319	\$587,510
ATX	1,385,837	\$2,807,692
PNG	1,325,952	\$2,963,084
CDPR	1,322,655	\$339,008

Top 20 TSXV Symbols by Value		
Symbol	TSXV Volume	TSXV Value
ARTG	929,687	\$15,538,053
TOI	36,866	\$5,161,489
LMN	110,828	\$4,664,612
PNG	1,325,952	\$2,963,084
FDR	624,329	\$2,925,235
ATX	1,385,837	\$2,807,692
MAU	786,271	\$2,420,087
WED	65,971	\$1,898,930
LUCA	1,500,623	\$1,606,000
HIVE	753,867	\$1,487,456
WRLG	2,585,090	\$1,468,764
NDA	1,027,135	\$1,395,965
NICU	1,026,012	\$1,384,431
EMO	1,145,808	\$1,370,254
SGD	175,798	\$1,267,058
FWZ	707,474	\$1,095,631
ITR	657,953	\$1,043,003
GOT	742,119	\$1,031,820
PTK	188,603	\$982,455
AFM	1,793,715	\$977,954

Dark TSX/TSXV Trading			
Volume	76,864,940	Daily Trades	354,684
Value	3,115,071,785	Daily Symbols Traded	1,677