

DAILY REPORT



For more information, email trading_sales@tsx.com

March 12, 2025

Indices	March 12 Close	Previous Close	Change	% Change
S&P/TSX Composite Index	24,423.34	24,248.20		0.72 %
S&P/TSX 60 Index	1,468.51	1,459.21		0.64 %
S&P/TSX Venture Composite	613.98	601.89		2.01 %
S&P/TSX Completion Index	1,451.81	1,436.19		1.09 %
S&P/TSX Smallcap Index	790.37	782.14		1.05 %

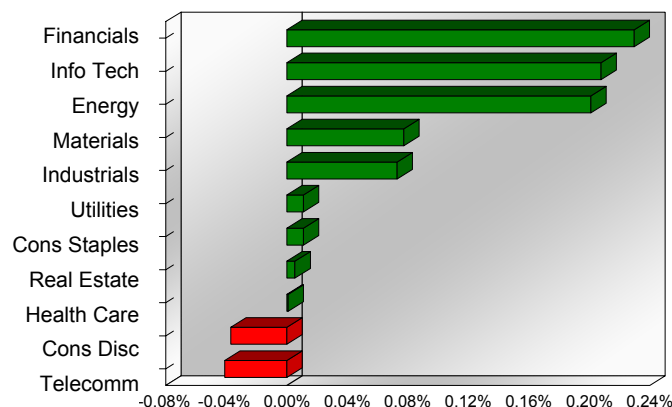
S&P/TSX Composite Index		
Advancers	Decliners	Unchanged
158	59	3

S&P/TSX Composite Index			
Top 10 Index Contributors		Top 10 Index Detractors	
Constituent	Index Contribution	Constituent	Index Contribution
SHOP	42.70	QSR	-4.82
BMO	10.83	BCE	-4.60
RY	9.81	T	-4.58
MFC	9.57	WCN	-3.95
CNQ	9.24	DOL	-3.19
TD	8.96	ABX	-2.65
CP	7.55	NTR	-2.62
CNR	6.87	FFH	-2.07
TECK.B	6.60	CAE	-1.73
CSU	4.48	TRI	-1.52

S&P/TSX Composite Index			
Top 10 Advancers		Top 10 Decliners	
Constituent	Return	Constituent	Return
TCL.A	6.91 %	MATR	-5.46 %
CEU	5.68 %	LIF	-4.11 %
BBD.B	5.20 %	BHC	-3.37 %
BTE	5.12 %	PET	-2.86 %
VET	5.10 %	BYD	-2.84 %
FVI	4.64 %	IIP.UN	-2.57 %
TLRY	4.55 %	CAE	-2.29 %
BIR	4.54 %	QSR	-2.23 %
KEL	4.46 %	BCE	-2.07 %
OGC	4.16 %	T	-2.03 %

S&P/TSX Composite Index				
Sector	# of Index Constituents	Weight	Market Cap (\$B)	Index Contribution
Financials	25	31.96 %	\$1,113.29	55.69
Information Technology	10	9.78 %	\$340.85	50.41
Energy	43	16.85 %	\$586.92	48.77
Materials	49	13.15 %	\$458.14	18.76
Industrials	28	12.49 %	\$435.11	17.69
Utilities	15	3.91 %	\$136.36	2.68
Consumer Staples	10	3.80 %	\$132.40	2.66
Real Estate	20	1.93 %	\$67.17	1.31
Health Care	4	0.28 %	\$9.69	0.23
Consumer Discretionary	11	3.33 %	\$116.08	-8.97
Communication Services	5	2.51 %	\$87.47	-9.94
S&P/TSX Composite Index	220	100.00 %	\$3,483.48	179.28

S&P/TSX Composite Index - Sectors Returns



This report is published by TSX Inc. TSX Inc. does not guarantee either the completeness or the accuracy of this information. The information contained in this report is provided for informational purposes only and you agree not to rely upon the information contained in this report for any trading, business or financial purpose. These sheets are printed in Canada and issued by TSX Inc. under the express condition, to which everyone receiving or making use thereof assents, that no liability shall be incurred by TSX Inc. or its affiliated companies or any other vendor or donor, including, without limitation, for reliance on or for any errors or inaccuracies in this report. Neither TMX Group Limited, TSX Inc., nor any of their affiliated companies, guarantees the completeness of the information contained in this document and are not responsible for any errors or omission in or your use of, or reliance on, the information. This publication is under copyright. © 2016 TSX Inc. All rights reserved. Do not copy, distribute, sell or modify this publication without the prior written consent of TSX Inc. <http://www.tsx.com/trading>

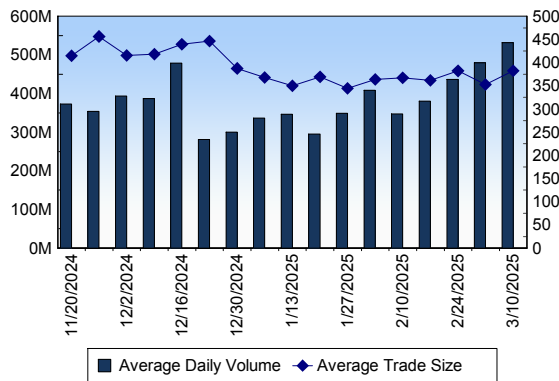
TSX

Daily Volume	459,318,303
Daily Value	\$16,234,721,606
Daily Trades	1,181,029
Daily Symbols Traded	2,173

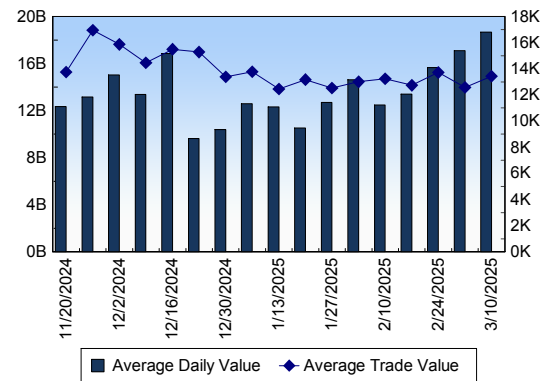
TSX ANONYMOUS TRADING

Daily Volume	260,798,810
Daily Value	\$9,893,269,770
Average Trade Size	398
% TSX Volume	56.78 %

TSX Volume



TSX Value (in Canadian Dollars)



Top 20 TSX Symbols by Volume

Symbol	TSX Volume	TSX Value
CNQ	38,647,159	\$1,622,827,323
CVE	13,500,822	\$256,632,313
SU	12,317,514	\$632,746,897
WCP	10,778,950	\$91,531,602
MFC	9,240,184	\$387,958,752
VRN	8,261,316	\$71,913,262
CM	6,817,656	\$548,177,515
T	6,704,278	\$146,206,073
ENB	6,354,997	\$389,417,947
TRP	6,225,424	\$417,109,835
TOU	6,031,049	\$397,175,183
HND	5,352,719	\$26,911,794
BTE	5,260,291	\$15,946,549
TD	5,127,262	\$429,400,111
BCE	5,012,124	\$175,985,666
XIU	4,703,934	\$173,986,678
BNS	4,651,958	\$318,379,799
PPL	3,947,813	\$220,126,887
QBR.B	3,710,674	\$135,672,932
K	3,602,099	\$57,512,391

Top 20 TSX Symbols by Value

Symbol	TSX Volume	TSX Value
CNQ	38,647,159	\$1,622,827,323
SU	12,317,514	\$632,746,897
RY	3,435,441	\$549,694,837
CM	6,817,656	\$548,177,515
SHOP	3,282,919	\$457,659,253
TD	5,127,262	\$429,400,111
TRP	6,225,424	\$417,109,835
TOU	6,031,049	\$397,175,183
ENB	6,354,997	\$389,417,947
MFC	9,240,184	\$387,958,752
NA	3,246,638	\$377,270,563
BNS	4,651,958	\$318,379,799
BMO	2,038,748	\$283,185,000
NTR	3,560,731	\$260,046,768
CVE	13,500,822	\$256,632,313
SLF	3,245,632	\$255,430,306
CNR	1,646,953	\$228,459,278
AEM	1,533,768	\$222,443,844
PPL	3,947,813	\$220,126,887
CSU	37,239	\$177,601,582

ETF Trading

Daily Volume	51,854,278	Average Trade Value	\$14,454
Daily Value	\$1,356,510,075	Average Trade Size	553
# Trades	93,853	# of ETFs Traded	1,112

Top 10 ETFs by TSX Volume

Symbol	Market Volume	Market Value
HND	5,352,719	\$26,911,794
XIU	4,703,934	\$173,986,678
QQU	2,122,841	\$42,886,170
XEG	2,029,887	\$33,495,712
QQD	1,793,761	\$21,344,275
ZEB	1,556,141	\$61,732,639
NVDA	1,213,109	\$32,380,383
SPXU	1,114,267	\$25,432,908
HOD	981,145	\$6,431,407
TSLA	965,059	\$21,582,268

Top 10 ETFs by TSX Value

Symbol	Market Volume	Market Value
XIU	4,703,934	\$173,986,678
ZEB	1,556,141	\$61,732,639
VFV	378,210	\$54,185,984
QQU	2,122,841	\$42,886,170
XQQ	736,863	\$36,178,347
ZSP	408,191	\$36,007,242
HXT	526,003	\$33,751,802
XEG	2,029,887	\$33,495,712
NVDA	1,213,109	\$32,380,383
XSP	477,192	\$27,689,172

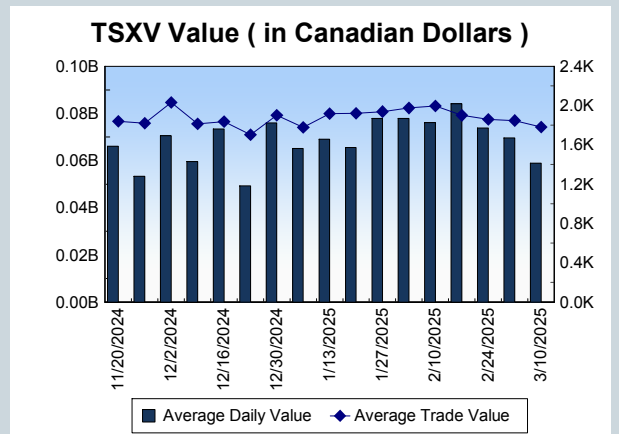
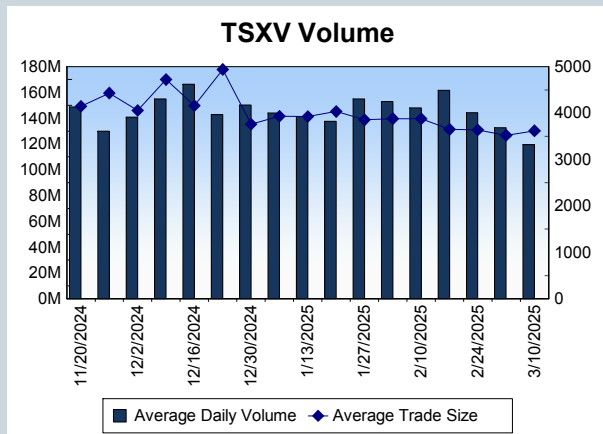
Block Trades	Non Block Trades
1,758	1,179,271

Top 5 Block Trade Brokers by Volume	
Broker	TSX Block Volume
GOLDMAN SACHS CANADA I	61,398,900
BMO NESBITT BURNS INC.	54,204,300
TD SECURITIES INC.	30,878,000
RBC CAPITAL MARKETS	29,233,400
NATIONAL BANK FINANCIAL	16,770,400

Top 5 Block Trade Symbols by Volume	
Symbol	TSX Block Volume
CNQ	33,313,700
CVE	10,074,000
SU	9,768,300
MFC	6,570,200
CM	5,101,300

TSXV	
Daily Volume	116,008,137
Daily Value	\$56,351,034
Daily Trades	30,968
Daily Symbols Traded	998

TSXV ANONYMOUS TRADING	
Daily Volume	67,318,519
Daily Value	\$36,329,010
Average Trade Size	3,908
% TSXV Volume	58.03%



Top 20 TSXV Symbols by Volume		
Symbol	TSXV Volume	TSXV Value
QNC	1,866,174	\$1,129,915
MMN	1,733,000	\$9,115
CANB	1,720,595	\$160,903
RUG	1,570,000	\$45,850
AUAU	1,527,000	\$190,846
BCM	1,424,800	\$302,053
NSE	1,348,135	\$449,570
EOG	1,265,069	\$190,980
MOG	1,226,970	\$156,164
VO	1,204,319	\$85,024
FKM	1,189,500	\$143,805
MCI	1,187,356	\$46,586
NOB	1,148,532	\$54,809
GLD	1,144,200	\$30,744
AGX	1,107,323	\$202,204
SXGC	1,089,510	\$3,818,367
JUGR	1,086,705	\$84,561
GSVR	971,479	\$182,458
OCG	902,703	\$242,366
GRSL	892,735	\$186,018

Top 20 TSXV Symbols by Value		
Symbol	TSXV Volume	TSXV Value
TOI	41,172	\$5,752,407
SXGC	1,089,510	\$3,818,367
LMN	54,586	\$2,167,389
SGD	272,285	\$2,134,318
HIVE	766,225	\$1,963,039
PNG	744,661	\$1,664,509
ARTG	86,810	\$1,447,804
FDR	220,924	\$1,162,110
QNC	1,866,174	\$1,129,915
ITR	616,986	\$1,014,087
PTK	144,451	\$763,576
ATX	359,464	\$743,890
NDA	500,818	\$737,126
ZDC	230,607	\$710,220
EU	321,787	\$671,161
DBG	882,080	\$641,003
PNPN	371,813	\$612,156
EMO	455,615	\$579,966
CNC	550,479	\$577,470
NICU	317,608	\$499,953

Dark TSX/TSXV Trading			
Volume	37,635,690	Daily Trades	165,900
Value	1,331,408,088	Daily Symbols Traded	1,509