

DAILY REPORT



For more information, email trading_sales@tsx.com

March 3, 2025

Indices	March 3 Close	Previous Close	Change	% Change
S&P/TSX Composite Index	25,001.57	25,393.45		-1.54 %
S&P/TSX 60 Index	1,510.14	1,532.18		-1.44 %
S&P/TSX Venture Composite	595.24	614.64		-3.16 %
S&P/TSX Completion Index	1,457.07	1,486.84		-2.00 %
S&P/TSX Smallcap Index	781.88	798.80		-2.12 %

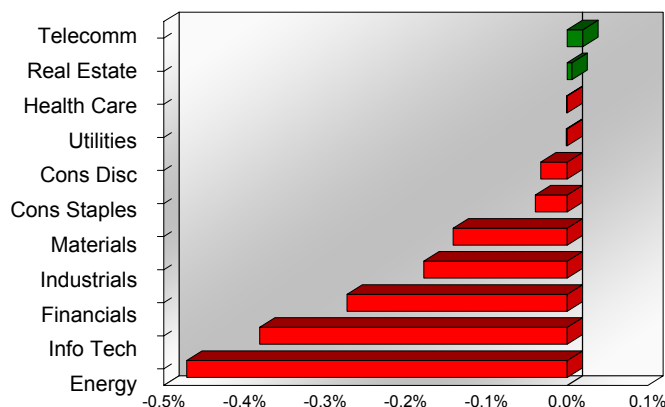
S&P/TSX Composite Index		
Advancers	Decliners	Unchanged
57	161	2

S&P/TSX Composite Index			
Top 10 Index Contributors		Top 10 Index Detractors	
Constituent	Index Contribution	Constituent	Index Contribution
WCN	7.38	SHOP	-61.70
GFL	3.82	CNQ	-29.94
BCE	3.50	SU	-24.04
SLF	2.48	CP	-17.58
FTS	2.00	BN	-17.30
EMA	1.95	CSU	-17.12
TRP	1.93	CNR	-15.70
AGI	1.18	CLS	-14.43
SJ	1.13	RY	-14.19
ALA	0.99	NTR	-13.06

S&P/TSX Composite Index			
Top 10 Advancers		Top 10 Decliners	
Constituent	Return	Constituent	Return
SJ	3.93%	CLS	-12.95%
GFL	3.31%	VRN	-10.38%
TFPM	2.88%	NXE	-9.04%
CSH.UN	2.74%	IFP	-8.87%
PET	2.51%	VET	-8.71%
FCR.UN	2.42%	BTE	-8.54%
KXS	2.14%	MEG	-8.48%
CXB	2.11%	POU	-8.24%
AYA	2.09%	MDA	-8.14%
ACO.X	1.98%	CVE	-7.70%

S&P/TSX Composite Index				
Sector	# of Index Constituents	Weight	Market Cap (\$B)	Index Contribution
Communication Services	5	2.44 %	\$87.08	4.91
Real Estate	20	1.92 %	\$68.63	1.57
Health Care	4	0.28 %	\$10.04	-0.16
Utilities	15	3.85 %	\$137.36	-0.26
Consumer Discretionary	11	3.29 %	\$117.15	-8.26
Consumer Staples	10	3.76 %	\$133.91	-10.00
Materials	49	12.45 %	\$443.96	-35.87
Industrials	28	12.64 %	\$450.62	-45.14
Financials	25	33.01 %	\$1,177.29	-69.29
Information Technology	10	10.23 %	\$364.72	-96.82
Energy	43	16.13 %	\$575.19	-119.80
S&P/TSX Composite Index	220	100.00 %	\$3,565.95	-379.11

S&P/TSX Composite Index - Sectors Returns



This report is published by TSX Inc. TSX Inc. does not guarantee either the completeness or the accuracy of this information. The information contained in this report is provided for informational purposes only and you agree not to rely upon the information contained in this report for any trading, business or financial purpose. These sheets are printed in Canada and issued by TSX Inc. under the express condition, to which everyone receiving or making use thereof assents, that no liability shall be incurred by TSX Inc. or its affiliated companies or any other vendor or donor, including, without limitation, for reliance on or for any errors or inaccuracies in this report. Neither TMX Group Limited, TSX Inc., nor any of their affiliated companies, guarantees the completeness of the information contained in this document and are not responsible for any errors or omission in or your use of, or reliance on, the information. This publication is under copyright. © 2016 TSX Inc. All rights reserved. Do not copy, distribute, sell or modify this publication without the prior written consent of TSX Inc. <http://www.tsx.com/trading>

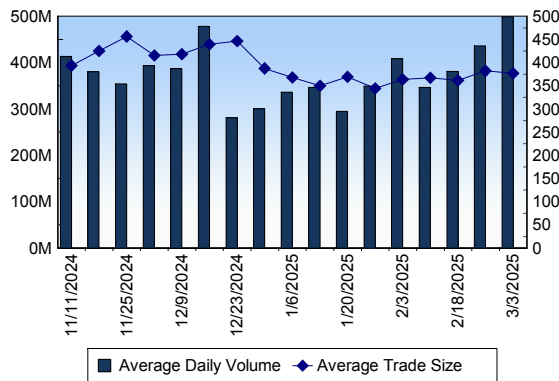
TSX

Daily Volume	498,535,464
Daily Value	\$18,053,212,957
Daily Trades	1,322,891
Daily Symbols Traded	2,214

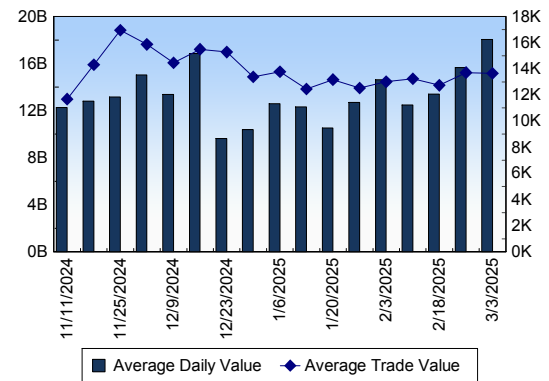
TSX ANONYMOUS TRADING

Daily Volume	248,593,386
Daily Value	\$9,035,346,143
Average Trade Size	355
% TSX Volume	49.86 %

TSX Volume



TSX Value (in Canadian Dollars)



Top 20 TSX Symbols by Volume

Symbol	TSX Volume	TSX Value
SU	24,836,310	\$1,326,640,668
CNQ	18,078,381	\$705,115,746
MFC	13,670,890	\$611,494,867
ENB	13,646,784	\$844,745,802
BTE	9,994,680	\$30,388,884
GWO	8,874,496	\$472,468,890
TRP	7,359,883	\$478,474,058
VRN	6,595,899	\$48,548,658
SLF	6,371,533	\$516,226,631
CVE	6,287,163	\$118,950,526
XIU	6,242,598	\$239,124,233
XEG	6,181,350	\$100,478,904
HND	5,411,745	\$29,745,460
MG	5,320,545	\$274,542,866
MEG	5,279,627	\$111,606,200
TD	5,089,863	\$440,377,657
PPL	4,854,110	\$270,812,909
CXB	4,711,011	\$13,705,988
BNS	4,546,192	\$326,435,940
ATH	4,493,898	\$20,845,430

Top 20 TSX Symbols by Value

Symbol	TSX Volume	TSX Value
SU	24,836,310	\$1,326,640,668
ENB	13,646,784	\$844,745,802
CNQ	18,078,381	\$705,115,746
MFC	13,670,890	\$611,494,867
RY	3,371,113	\$572,888,130
SLF	6,371,533	\$516,226,631
TRP	7,359,883	\$478,474,058
GWO	8,874,496	\$472,468,890
TD	5,089,863	\$440,377,657
SHOP	2,688,636	\$420,778,473
CM	4,331,604	\$375,953,777
CNR	2,580,448	\$373,069,856
BNS	4,546,192	\$326,435,940
MG	5,320,545	\$274,542,866
BMO	1,849,129	\$273,676,784
PPL	4,854,110	\$270,812,909
CLS	1,889,999	\$264,144,004
NA	2,172,605	\$258,147,264
FTS	4,018,991	\$257,124,651
XIU	6,242,598	\$239,124,233

ETF Trading

Daily Volume	70,135,582	Average Trade Value	\$13,838
Daily Value	\$1,936,018,948	Average Trade Size	501
# Trades	139,908	# of ETFs Traded	1,158

Top 10 ETFs by TSX Volume

Symbol	Market Volume	Market Value
XIU	6,242,598	\$239,124,233
XEG	6,181,350	\$100,478,904
HND	5,411,745	\$29,745,460
ZEB	2,847,345	\$118,994,410
NVDA	2,544,848	\$69,415,995
QQU	1,335,986	\$30,177,139
HOU	1,156,118	\$13,479,457
DLR	1,115,927	\$16,426,626
CASH	1,109,266	\$55,460,647
BTCC.B	1,095,218	\$19,979,625

Top 10 ETFs by TSX Value

Symbol	Market Volume	Market Value
XIU	6,242,598	\$239,124,233
ZEB	2,847,345	\$118,994,410
XEG	6,181,350	\$100,478,904
NVDA	2,544,848	\$69,415,995
VFV	411,686	\$62,452,228
ZSP	654,325	\$61,096,843
CASH	1,109,266	\$55,460,647
HXT	773,258	\$51,547,577
XSP	643,078	\$39,331,641
XQQ	621,734	\$31,932,351

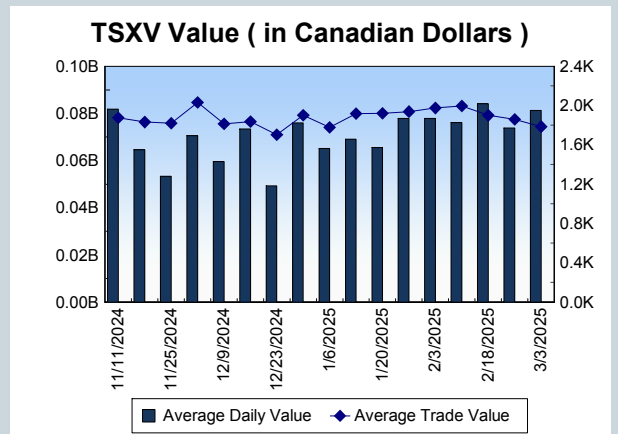
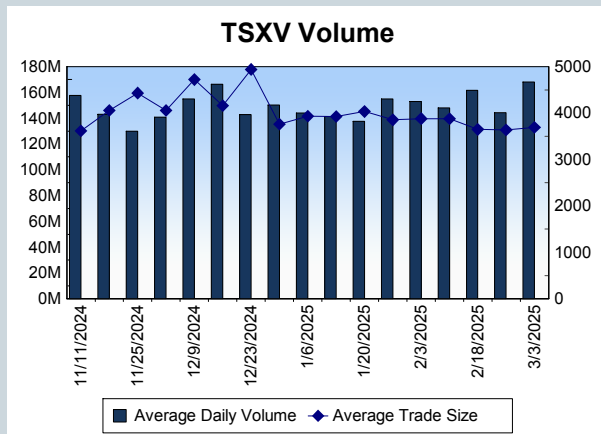
Block Trades	Non Block Trades
1,923	1,320,968

Top 5 Block Trade Brokers by Volume	
Broker	TSX Block Volume
BMO NESBITT BURNS INC.	35,483,600
RBC CAPITAL MARKETS	31,334,300
CIBC WORLD MARKETS INC.	26,040,500
SCOTIA CAPITAL INC.	25,998,500
TD SECURITIES INC.	22,229,700

Top 5 Block Trade Symbols by Volume	
Symbol	TSX Block Volume
SU	19,496,500
CNQ	11,028,800
MFC	10,759,900
ENB	10,541,600
GWO	7,688,200

TSXV	
Daily Volume	167,971,566
Daily Value	\$81,299,246
Daily Trades	45,513
Daily Symbols Traded	1,077

TSXV ANONYMOUS TRADING	
Daily Volume	80,832,056
Daily Value	\$48,708,591
Average Trade Size	3,463
% TSXV Volume	48.12%



Top 20 TSXV Symbols by Volume		
Symbol	TSXV Volume	TSXV Value
HEM	16,720,833	\$2,596,322
EU	4,139,132	\$9,180,105
SLG	3,697,115	\$820,775
NSE	3,223,469	\$1,715,214
TECT	2,478,100	\$152,269
GGA	2,259,181	\$990,988
NDA	2,156,934	\$3,595,897
AUUA	1,901,000	\$133,055
QNC	1,877,787	\$1,240,717
MATE	1,825,631	\$257,141
ACU	1,778,822	\$35,579
VTT	1,585,385	\$15,879
DOS	1,570,700	\$31,969
FPC	1,558,516	\$287,886
HIVE	1,507,078	\$4,533,187
RG	1,435,000	\$29,020
ZNG	1,343,368	\$264,185
SIE	1,307,300	\$58,189
OM	1,301,623	\$532,074
FUU	1,300,669	\$238,392

Top 20 TSXV Symbols by Value		
Symbol	TSXV Volume	TSXV Value
EU	4,139,132	\$9,180,105
TOI	43,549	\$6,117,780
HIVE	1,507,078	\$4,533,187
ARTG	226,205	\$3,609,772
NDA	2,156,934	\$3,595,897
HEM	16,720,833	\$2,596,322
PNG	875,754	\$1,912,237
NSE	3,223,469	\$1,715,214
PTK	325,780	\$1,711,815
NFG	578,371	\$1,514,000
LMN	37,414	\$1,380,002
QNC	1,877,787	\$1,240,717
SGD	157,317	\$1,036,285
PNPN	697,962	\$1,027,777
GGA	2,259,181	\$990,988
GOT	588,302	\$974,787
EMO	628,451	\$888,533
SLG	3,697,115	\$820,775
RIO	1,116,715	\$815,553
SEI	1,013,419	\$767,727

Dark TSX/TSXV Trading			
Volume	42,000,190	Daily Trades	169,314
Value	1,472,189,159	Daily Symbols Traded	1,592