

# DAILY REPORT



For more information, email [trading\\_sales@tsx.com](mailto:trading_sales@tsx.com)

April 26, 2023

Indices	April 26 Close	Previous Close	Change	% Change
S&P/TSX Composite Index	20,366.72	20,439.87		-0.36 %
S&P/TSX 60 Index	1,229.43	1,232.31		-0.23 %
S&P/TSX Venture Composite	602.58	603.78		-0.20 %
S&P/TSX Completion Index	1,190.67	1,201.24		-0.88 %
S&P/TSX Smallcap Index	698.52	703.80		-0.75 %

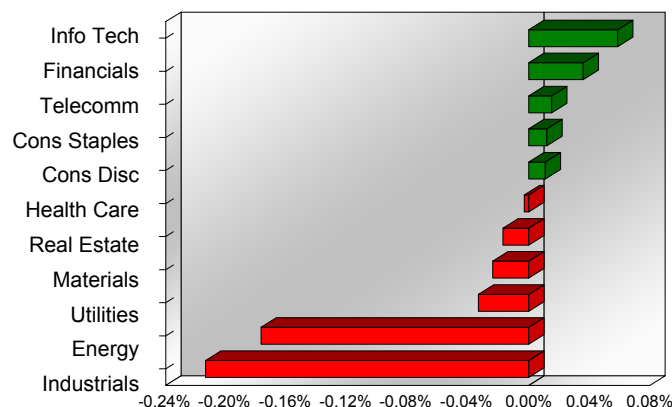
S&P/TSX Composite Index		
Advancers	Decliners	Unchanged
74	155	3

S&P/TSX Composite Index			
Top 10 Index Contributors		Top 10 Index Detractors	
Constituent	Index Contribution	Constituent	Index Contribution
GIB.A	8.33	CP	-15.28
TECK.B	7.81	BN	-10.11
RY	4.56	CNR	-9.97
RCI.B	4.34	TFII	-8.54
BMO	4.14	CVE	-7.98
FM	4.08	SU	-7.11
CSU	3.26	TRP	-3.66
CM	3.06	TOU	-3.65
FFH	2.65	WPM	-3.14
L	1.91	ABX	-3.04

S&P/TSX Composite Index			
Top 10 Advancers		Top 10 Decliners	
Constituent	Return	Constituent	Return
PD	5.25%	TFII	-11.31%
GIB.A	4.08%	SPB	-10.03%
TECK.B	4.05%	BBU.UN	-5.17%
WPK	3.66%	VET	-5.06%
CLS	3.62%	IFP	-4.80%
ATZ	3.47%	BBD.B	-4.26%
FM	3.24%	HWX	-4.12%
CTS	3.08%	DND	-4.09%
ALA	2.98%	BLX	-3.99%
RCI.B	2.68%	BTE	-3.72%

S&P/TSX Composite Index				
Sector	# of Index Constituents	Weight	Market Cap (\$B)	Index Contribution
Information Technology	12	6.65 %	\$194.92	12.01
Financials	29	30.04 %	\$880.42	7.37
Communication Services	5	4.41 %	\$129.21	3.08
Consumer Staples	11	4.33 %	\$126.99	2.46
Consumer Discretionary	15	3.67 %	\$107.71	2.24
Health Care	6	0.35 %	\$10.19	-0.61
Real Estate	21	2.44 %	\$71.40	-3.48
Materials	50	12.77 %	\$374.30	-4.89
Utilities	16	4.59 %	\$134.67	-6.83
Energy	40	17.04 %	\$499.58	-36.17
Industrials	27	13.71 %	\$401.79	-43.67
<b>S&amp;P/TSX Composite Index</b>	<b>232</b>	<b>100.00 %</b>	<b>\$2,931.18</b>	<b>-68.50</b>

S&P/TSX Composite Index - Sectors Returns



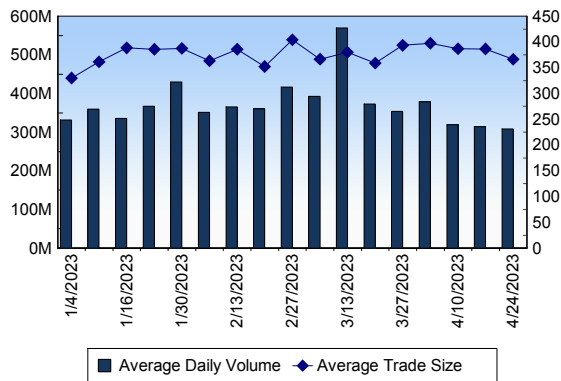
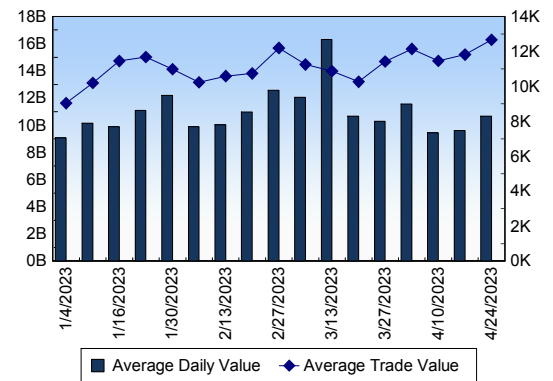
This report is published by TSX Inc. TSX Inc. does not guarantee either the completeness or the accuracy of this information. The information contained in this report is provided for informational purposes only and you agree not to rely upon the information contained in this report for any trading, business or financial purpose. These sheets are printed in Canada and issued by TSX Inc. under the express condition, to which everyone receiving or making use thereof assents, that no liability shall be incurred by TSX Inc. or its affiliated companies or any other vendor or donor, including, without limitation, for reliance on or for any errors or inaccuracies in this report. Neither TMX Group Limited, TSX Inc., nor any of their affiliated companies, guarantees the completeness of the information contained in this document and are not responsible for any errors or omission in or your use of, or reliance on, the information. This publication is under copyright. © 2016 TSX Inc. All rights reserved. Do not copy, distribute, sell or modify this publication without the prior written consent of TSX Inc. <http://www.tsx.com/trading>

**TSX**

Daily Volume	326,288,744
Daily Value	\$10,558,536,878
Daily Trades	905,735
Daily Symbols Traded	2,052

**TSX ANONYMOUS TRADING**

Daily Volume	157,714,502
Daily Value	\$5,712,027,869
Average Trade Size	349
% TSX Volume	48.34 %

**TSX Volume****TSX Value ( in Canadian Dollars )****Top 20 TSX Symbols by Volume**

Symbol	TSX Volume	TSX Value
CVE	9,674,694	\$220,459,153
RY	8,494,785	\$1,122,571,604
SU	7,448,823	\$298,597,430
MFC	6,881,636	\$178,405,618
ATH	5,545,526	\$18,105,677
TRP	5,498,271	\$302,558,113
SSL	5,436,976	\$42,061,629
ENB	5,278,390	\$281,724,915
HUT	5,037,028	\$12,589,667
TD	5,032,971	\$408,295,007
BTE	4,676,545	\$23,283,101
BMO	4,250,646	\$516,459,533
CNQ	3,925,034	\$314,798,872
BNS	3,834,115	\$255,267,168
CPG	3,826,641	\$37,526,320
POW	3,687,848	\$131,927,218
TVE	3,447,025	\$12,721,492
CM	3,356,786	\$187,732,337
ARX	3,340,595	\$54,387,649
HNU	3,294,753	\$49,695,255

**Top 20 TSX Symbols by Value**

Symbol	TSX Volume	TSX Value
RY	8,494,785	\$1,122,571,604
BMO	4,250,646	\$516,459,533
TD	5,032,971	\$408,295,007
CNQ	3,925,034	\$314,798,872
TRP	5,498,271	\$302,558,113
SU	7,448,823	\$298,597,430
ENB	5,278,390	\$281,724,915
BNS	3,834,115	\$255,267,168
CNR	1,470,546	\$234,834,308
CVE	9,674,694	\$220,459,153
SHOP	3,228,684	\$206,370,655
CM	3,356,786	\$187,732,337
RCI.B	2,781,293	\$184,893,870
TOU	3,060,766	\$180,234,231
MFC	6,881,636	\$178,405,618
NA	1,693,829	\$166,111,616
TECK.B	2,466,754	\$151,555,895
TFII	998,564	\$141,812,968
AEM	1,806,704	\$137,984,185
CP	1,269,319	\$134,583,311

**ETF Trading**

Daily Volume	29,277,833	Average Trade Value	\$11,892
Daily Value	\$639,280,887	Average Trade Size	545
# Trades	53,756	# of ETFs Traded	880

**Top 10 ETFs by TSX Volume**

Symbol	Market Volume	Market Value
HNU	3,294,753	\$49,695,255
XIU	2,408,657	\$75,233,336
HOU	1,806,935	\$23,398,455
XEG	1,737,392	\$26,063,312
HOD	1,342,715	\$14,485,397
BTCC.B	693,395	\$4,014,718
ZEB	680,134	\$23,029,443
HQD	610,942	\$16,292,818
HQU	583,585	\$6,165,160
DLR	535,774	\$7,449,992

**Top 10 ETFs by TSX Value**

Symbol	Market Volume	Market Value
XIU	2,408,657	\$75,233,336
HNU	3,294,753	\$49,695,255
XEG	1,737,392	\$26,063,312
HOU	1,806,935	\$23,398,455
ZSP	379,775	\$23,059,466
ZEB	680,134	\$23,029,443
HND	282,329	\$20,077,954
HQD	610,942	\$16,292,818
PSA	305,819	\$15,345,761
HSD	511,467	\$15,148,412

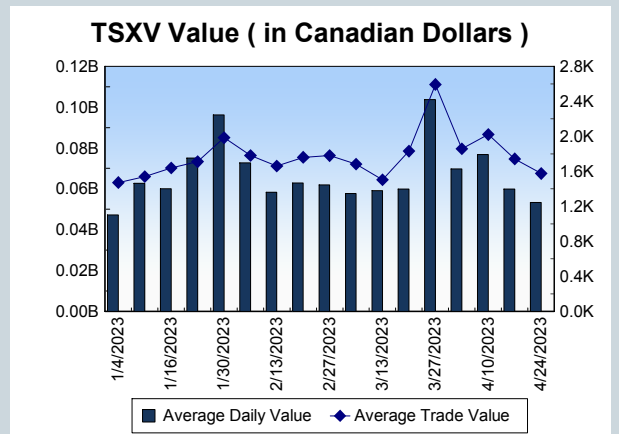
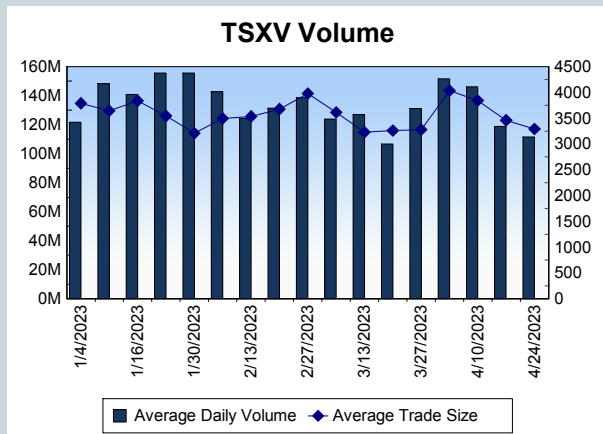
<b>Block Trades</b>	<b>Non Block Trades</b>
1,234	904,501

Top 5 Block Trade Brokers by Volume	
Broker	TSX Block Volume
GOLDMAN SACHS CANADA I	21,296,700
TD SECURITIES INC.	19,394,400
VIRTU CANADA CORP	13,472,100
MORGAN STANLEY CANADA	12,525,300
SOCIETE GENERALE CAPITA	11,951,300

Top 5 Block Trade Symbols by Volume	
Symbol	TSX Block Volume
RY	7,034,600
MFC	4,682,100
SSL	4,475,200
TRP	3,613,300
ENB	3,603,900

TSXV	
Daily Volume	106,914,941
Daily Value	\$58,564,316
Daily Trades	34,127
Daily Symbols Traded	1,121

TSXV ANONYMOUS TRADING	
Daily Volume	53,356,515
Daily Value	\$27,853,249
Average Trade Size	3,018
% TSXV Volume	49.91%



Top 20 TSXV Symbols by Volume		
Symbol	TSXV Volume	TSXV Value
FOM	2,774,314	\$10,261,348
NXS	2,602,332	\$13,012
OCG	1,880,470	\$532,358
ROCK	1,869,000	\$56,060
REVO	1,635,655	\$281,475
C	1,500,000	\$22,500
KHRN	1,308,190	\$63,590
FUU	1,272,349	\$433,023
DLTA	1,258,849	\$709,487
GXU	1,249,951	\$197,943
GOT	1,154,012	\$768,370
JOR	1,042,694	\$86,479
LTH	957,971	\$2,502,404
MAE	887,000	\$35,645
GSVR	756,025	\$420,321
SUU	728,013	\$538,969
PEI	723,837	\$88,433
GSHR	718,080	\$160,403
KLX	708,600	\$60,714
BOCA	694,000	\$24,455

Top 20 TSXV Symbols by Value		
Symbol	TSXV Volume	TSXV Value
FOM	2,774,314	\$10,261,348
LMN	197,653	\$3,639,487
HIVE	579,510	\$2,671,427
LTH	957,971	\$2,502,404
CNL	313,577	\$1,945,289
NGEX	257,397	\$1,637,794
QIPT	171,356	\$1,325,962
PMET	94,393	\$1,150,645
TOI	10,088	\$876,695
GOT	1,154,012	\$768,370
DLTA	1,258,849	\$709,487
LI	239,727	\$669,444
CRE	279,689	\$616,322
FL	309,535	\$580,227
CORE	242,100	\$543,574
SUU	728,013	\$538,969
OCG	1,880,470	\$532,358
CNC	367,065	\$525,361
BRW	579,654	\$457,172
NKL	366,053	\$442,901

Dark TSX/TSXV Trading			
Volume	17,667,360	Daily Trades	86,351
Value	615,755,619	Daily Symbols Traded	1,196