



March 20, 2020

For more information, email trading_sales@tsx.com
 Visit our blog at <http://exchange.tmx.com/>

Indices	March 20 Close	Previous Close	Change	% Change
S&P/TSX Composite Index	11,851.81			%
S&P/TSX 60 Index	721.98			%
S&P/TSX Venture Composite	356.54			%
S&P/TSX Completion Index	664.29			%
S&P/TSX Smallcap Index	334.04			%

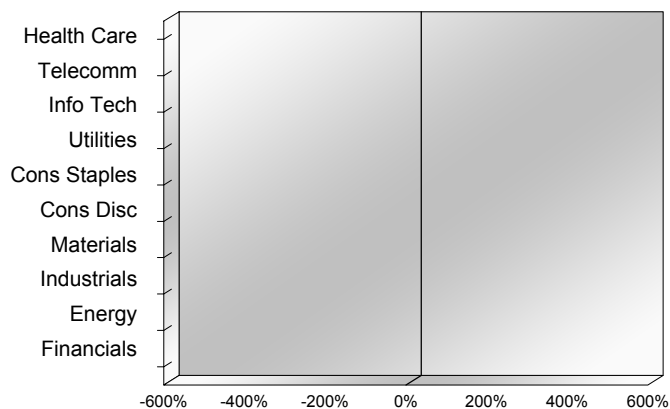
S&P/TSX Composite Index		
Advancers	Decliners	Unchanged
0	0	0

S&P/TSX Composite Index			
Top 10 Index Contributors		Top 10 Index Detractors	
Constituent	Index Contribution	Constituent	Index Contribution

S&P/TSX Composite Index			
Top 10 Advancers		Top 10 Decliners	
Constituent	Return	Constituent	Return
	%		%

S&P/TSX Composite Index				
Sector	# of Index Constituents	Weight	Market Cap (\$B)	Index Contribution
Health Care	10	%	\$17.25	
Communication Services	8	%	\$110.37	
Information Technology	10	%	\$114.73	
Utilities	16	%	\$92.82	
Consumer Staples	11	%	\$82.39	
Consumer Discretionary	16	%	\$56.52	
Materials	47	%	\$197.82	
Industrials	31	%	\$203.33	
Energy	30	%	\$207.93	
Financials	26	%	\$528.02	
S&P/TSX Composite Index	205	%	\$1,611.18	

S&P/TSX Composite Index - Sectors Returns



This report is published by TSX Inc. TSX Inc. does not guarantee either the completeness or the accuracy of this information. The information contained in this report is provided for informational purposes only and you agree not to rely upon the information contained in this report for any trading, business or financial purpose. These sheets are printed in Canada and issued by TSX Inc. under the express condition, to which everyone receiving or making use thereof assents, that no liability shall be incurred by TSX Inc. or its affiliated companies or any other vendor or donor, including, without limitation, for reliance on or for any errors or inaccuracies in this report. Neither TMX Group Limited, TSX Inc., nor any of their affiliated companies, guarantees the completeness of the information contained in this document and are not responsible for any errors or omission in or your use of, or reliance on, the information. This publication is under copyright. © 2015 TSX Inc. All rights reserved. Do not copy, distribute, sell or modify this publication without the prior written consent of TSX Inc. www.tmx.com/trading

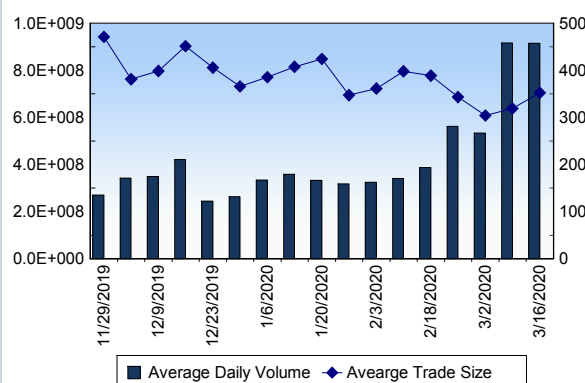
TSX

Daily Volume	1,107,313,783
Daily Value	\$18,502,771,600
Daily Trades	2,281,750
Daily Symbols Traded	2,000

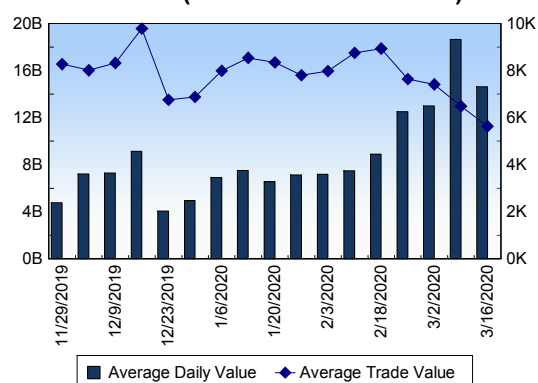
TSX ANONYMOUS TRADING

Daily Volume	417,000,533
Daily Value	\$5,675,839,138
Average Trade Size	449
% TSX Volume	37.66 %

TSX Volume



TSX Value (in Canadian Dollars)



Top 20 TSX Symbols by Volume

Symbol	TSX Volume	TSX Value
HOU	36,571,334	\$25,784,788
BBD.B	31,536,306	\$15,737,571
ENB	23,305,012	\$863,401,724
CNQ	22,362,751	\$272,127,996
CVE	20,968,188	\$51,694,217
SU	19,766,952	\$321,735,343
EQX	19,678,831	\$182,752,600
TD	16,737,588	\$912,972,176
ABX	16,609,498	\$386,487,326
K	16,426,455	\$92,078,631
ACB	16,382,069	\$17,658,932
MFC	16,323,931	\$233,104,536
RNX	14,271,559	\$2,922,560
OGC	13,080,607	\$16,672,362
HSE	12,498,579	\$37,805,250
XIU	12,006,370	\$225,576,402
FM	11,230,832	\$63,517,726
RY	11,147,720	\$908,528,453
OVV	10,886,293	\$39,118,819
BTE	10,843,548	\$3,805,727

Top 20 TSX Symbols by Value

Symbol	TSX Volume	TSX Value
TD	16,737,588	\$912,972,176
RY	11,147,720	\$908,528,453
ENB	23,305,012	\$863,401,724
CM	7,850,657	\$582,863,177
CNR	5,674,198	\$582,767,550
BMO	8,743,504	\$553,318,390
BNS	9,325,390	\$478,907,769
SHOP	779,882	\$389,127,251
ABX	16,609,498	\$386,487,326
TRP	6,708,565	\$363,494,700
CP	1,311,754	\$363,005,806
BAM.A	5,763,519	\$348,605,147
SU	19,766,952	\$321,735,343
BCE	5,784,814	\$310,914,242
SLF	7,697,470	\$290,469,995
CNQ	22,362,751	\$272,127,996
FNV	1,729,493	\$245,367,280
FTS	4,925,613	\$236,892,105
CSU	196,507	\$236,209,913
MFC	16,323,931	\$233,104,536

ETF Trading

Daily Volume	111,096,991	Average Trade Value	\$11,492
Daily Value	\$1,307,835,309	Average Trade Size	976
# Trades	113,803	# of ETFs Traded	683

Top 10 ETFs by TSX Volume

Symbol	Market Volume	Market Value
HOU	36,571,334	\$25,784,788
XIU	12,006,370	\$225,576,402
XEG	3,856,727	\$11,755,825
HOD	3,716,901	\$42,750,128
HXD	3,715,138	\$25,805,682
HNU	2,688,222	\$8,866,236
HSD	2,562,093	\$42,749,406
XSP	2,256,957	\$58,542,258
XFN	2,033,199	\$58,470,358
ZCN	1,900,011	\$31,421,549

Top 10 ETFs by TSX Value

Symbol	Market Volume	Market Value
XIU	12,006,370	\$225,576,402
XSP	2,256,957	\$58,542,258
XFN	2,033,199	\$58,470,358
XQQ	750,862	\$43,069,626
HOD	3,716,901	\$42,750,128
HSD	2,562,093	\$42,749,406
ZCN	1,900,011	\$31,421,549
ZQQ	584,866	\$30,859,071
XIC	1,541,667	\$30,424,207
VFV	475,581	\$28,861,347

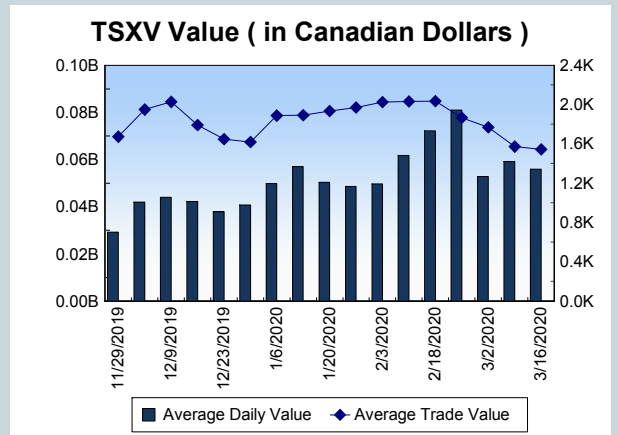
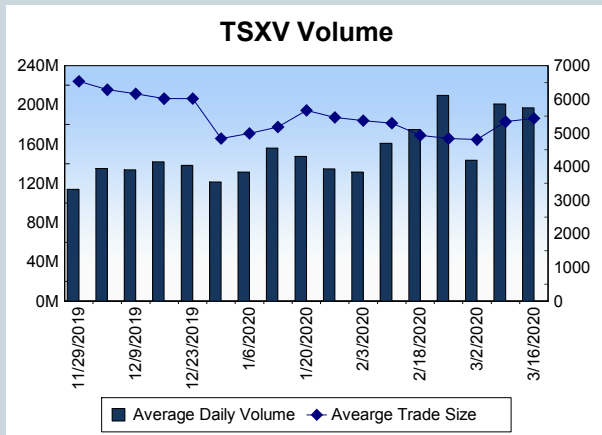
Block Trades	Non Block Trades
3,768	2,277,982

Top 5 Block Trade Brokers by Volume	
Broker	TSX Block Volume
GOLDMAN SACHS CANADA I	123,446,700
TD SECURITIES INC.	93,557,100
MORGAN STANLEY CANADA	76,426,400
BMO NESBITT BURNS INC.	53,105,800
CIBC WORLD MARKETS INC.	45,692,500

Top 5 Block Trade Symbols by Volume	
Symbol	TSX Block Volume
ENB	18,003,100
EQX	15,771,900
CNQ	12,113,600
ABX	11,147,400
TD	10,263,100

TSXV	
Daily Volume	174,686,297
Daily Value	\$78,014,010
Daily Trades	36,887
Daily Symbols Traded	1,014

TSXV ANONYMOUS TRADING	
Daily Volume	70,746,635
Daily Value	\$36,243,040
Average Trade Size	4,297
% TSXV Volume	40.50%



Top 20 TSXV Symbols by Volume		
Symbol	TSXV Volume	TSXV Value
KNT	11,504,267	\$30,631,670
KLY	6,069,179	\$69,731
MXL.H	4,700,500	\$61,918
LBL	4,630,603	\$573,617
HIVE	4,334,685	\$893,126
LITT	4,291,428	\$110,372
NRTH	3,568,476	\$377,623
PURE	3,139,581	\$62,742
SWA	2,766,000	\$96,810
GBR	2,291,916	\$13,073,700
VXL	2,172,430	\$316,958
FGC	1,869,000	\$9,345
N	1,857,667	\$556,170
SGC	1,743,000	\$50,370
CKK	1,712,000	\$22,360
TTD	1,661,959	\$63,050
XLY	1,600,621	\$426,766
ATE	1,540,523	\$696,792
PAN	1,490,000	\$22,350
TAL	1,433,365	\$183,360

Top 20 TSXV Symbols by Value		
Symbol	TSXV Volume	TSXV Value
KNT	11,504,267	\$30,631,670
GBR	2,291,916	\$13,073,700
PEO	481,952	\$3,585,019
SVI	529,863	\$1,417,883
XBC	598,650	\$1,337,385
NUAG	235,733	\$1,160,636
VLNS	459,806	\$933,828
HIVE	4,334,685	\$893,126
NVO	521,779	\$851,962
ATE	1,540,523	\$696,792
DYA	1,377,042	\$612,666
WED	395,600	\$581,925
LBL	4,630,603	\$573,617
KHRN	1,201,493	\$573,127
N	1,857,667	\$556,170
MTA	90,715	\$544,111
SKE	621,758	\$482,807
XLY	1,600,621	\$426,766
PTQ	651,565	\$416,438
PGM	686,829	\$390,139

Dark TSX/TSXV Trading			
Volume	40,528,960	Daily Trades	167,582
Value	759,527,738	Daily Symbols Traded	1,409