



May 14, 2019

For more information, email [trading\\_sales@tsx.com](mailto:trading_sales@tsx.com)  
 Visit our blog at <http://exchange.tmx.com/>

Indices	May 14 Close	Previous Close	Change	% Change
S&P/TSX Composite Index	16,284.53			%
S&P/TSX 60 Index	974.85			%
S&P/TSX Venture Composite	600.79			%
S&P/TSX Completion Index	978.43			%
S&P/TSX Smallcap Index	567.21			%

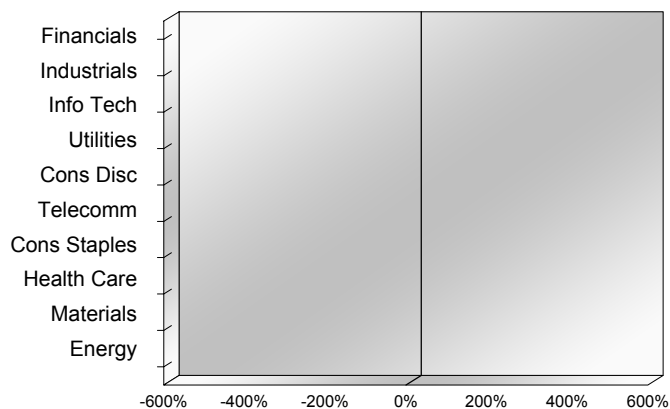
S&P/TSX Composite Index		
Advancers	Decliners	Unchanged
0	0	0

S&P/TSX Composite Index			
Top 10 Index Contributors		Top 10 Index Detractors	
Constituent	Index Contribution	Constituent	Index Contribution

S&P/TSX Composite Index			
Top 10 Advancers		Top 10 Decliners	
Constituent	Return	Constituent	Return
	%		%

S&P/TSX Composite Index				
Sector	# of Index Constituents	Weight	Market Cap (\$B)	Index Contribution
Financials	26	%	\$737.39	
Industrials	30	%	\$258.31	
Information Technology	10	%	\$109.05	
Utilities	16	%	\$96.59	
Consumer Discretionary	17	%	\$93.62	
Communication Services	7	%	\$129.99	
Consumer Staples	10	%	\$91.08	
Health Care	11	%	\$48.88	
Materials	49	%	\$226.06	
Energy	41	%	\$411.76	
<b>S&amp;P/TSX Composite Index</b>	<b>217</b>	<b>%</b>	<b>\$2,202.72</b>	

S&P/TSX Composite Index - Sectors Returns



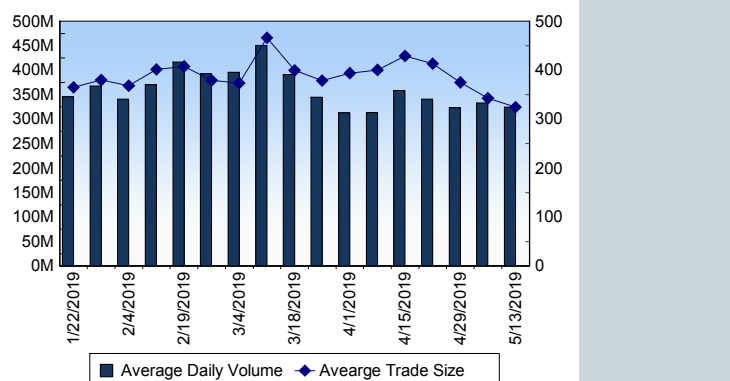
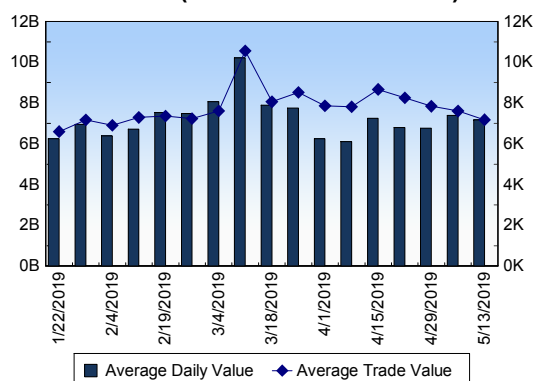
This report is published by TSX Inc. TSX Inc. does not guarantee either the completeness or the accuracy of this information. The information contained in this report is provided for informational purposes only and you agree not to rely upon the information contained in this report for any trading, business or financial purpose. These sheets are printed in Canada and issued by TSX Inc. under the express condition, to which everyone receiving or making use thereof assents, that no liability shall be incurred by TSX Inc. or its affiliated companies or any other vendor or donor, including, without limitation, for reliance on or for any errors or inaccuracies in this report. Neither TMX Group Limited, TSX Inc., nor any of their affiliated companies, guarantees the completeness of the information contained in this document and are not responsible for any errors or omission in or your use of, or reliance on, the information. This publication is under copyright. © 2015 TSX Inc. All rights reserved. Do not copy, distribute, sell or modify this publication without the prior written consent of TSX Inc. [www.tmx.com/trading](http://www.tmx.com/trading)

**TSX**

Daily Volume	304,329,054
Daily Value	\$6,674,272,814
Daily Trades	943,379
Daily Symbols Traded	1,846

**TSX ANONYMOUS TRADING**

Daily Volume	117,302,408
Daily Value	\$2,750,466,985
Average Trade Size	266
% TSX Volume	38.54 %

**TSX Volume****TSX Value ( in Canadian Dollars )****Top 20 TSX Symbols by Volume**

Symbol	TSX Volume	TSX Value
ENB	7,282,514	\$359,701,398
MFC	7,270,845	\$171,262,001
ACB	6,551,389	\$73,769,061
ECA	6,048,388	\$54,402,253
XIU	5,070,419	\$124,680,611
TRST	4,982,766	\$41,550,104
BBD.B	4,968,508	\$10,267,471
CPG	4,871,789	\$25,859,534
BTE	4,744,921	\$12,847,661
SU	3,679,475	\$158,123,366
WJA	3,672,456	\$109,546,300
S	3,312,614	\$667,457
CNQ	3,258,015	\$121,954,007
ABX	3,235,218	\$53,910,642
PLI	3,054,800	\$137,803
TGOD	2,949,604	\$11,548,335
TRP	2,474,572	\$158,051,888
WCP	2,402,838	\$12,557,965
HEXO	2,300,413	\$21,276,263
FM	2,284,620	\$27,247,969

**Top 20 TSX Symbols by Value**

Symbol	TSX Volume	TSX Value
ENB	7,282,514	\$359,701,398
RY	1,760,389	\$184,233,774
CM	1,563,316	\$171,594,138
MFC	7,270,845	\$171,262,001
TD	2,219,920	\$164,347,920
SU	3,679,475	\$158,123,366
TRP	2,474,572	\$158,051,888
XIU	5,070,419	\$124,680,611
SHOP	370,422	\$124,450,689
CNQ	3,258,015	\$121,954,007
BNS	1,643,204	\$117,273,575
BCE	1,929,849	\$116,145,723
WJA	3,672,456	\$109,546,300
WEED	1,655,367	\$100,980,537
SLF	1,869,590	\$99,051,861
BMO	950,051	\$98,074,053
CNR	777,605	\$96,694,349
MG	1,531,284	\$93,329,359
NA	1,373,130	\$86,565,738
QSR	959,874	\$85,755,683

**ETF Trading**

Daily Volume	20,735,138	Average Trade Value	\$12,791
Daily Value	\$388,656,771	Average Trade Size	682
# Trades	30,385	# of ETFs Traded	564

**Top 10 ETFs by TSX Volume**

Symbol	Market Volume	Market Value
XIU	5,070,419	\$124,680,611
HOU	2,161,631	\$16,439,006
HOD	1,667,728	\$7,871,443
XEG	660,443	\$6,473,446
HSD	592,951	\$8,552,714
HND	592,683	\$4,059,794
HNU	574,152	\$7,712,115
XGD	468,230	\$5,332,393
XSP	401,640	\$12,753,590
HGU	385,158	\$3,891,950

**Top 10 ETFs by TSX Value**

Symbol	Market Volume	Market Value
XIU	5,070,419	\$124,680,611
HOU	2,161,631	\$16,439,006
XSP	401,640	\$12,753,590
HXT	342,069	\$12,112,014
ZSP	275,696	\$11,623,563
HSD	592,951	\$8,552,714
HOD	1,667,728	\$7,871,443
HNU	574,152	\$7,712,115
HQU	106,725	\$7,050,111
XFN	178,512	\$6,792,874

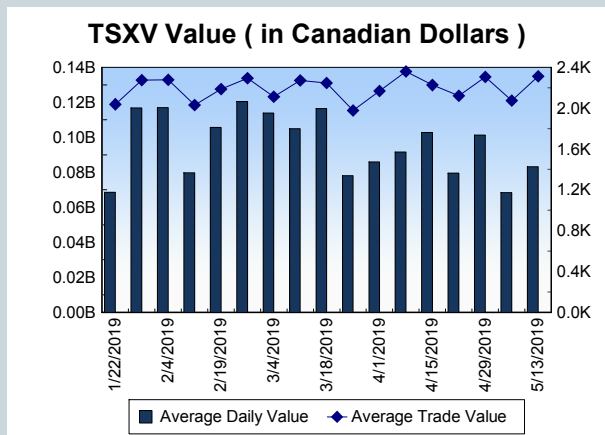
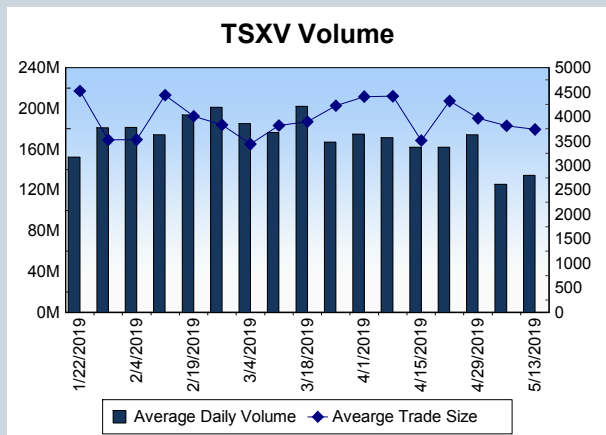
<b>Block Trades</b>	<b>Non Block Trades</b>
873	942,506

Top 5 Block Trade Brokers by Volume	
Broker	TSX Block Volume
NATIONAL BANK FINANCIAL	10,758,900
TD SECURITIES INC.	9,739,300
BMO NESBITT BURNS INC.	8,916,100
CIBC WORLD MARKETS INC.	5,525,000
RBC CAPITAL MARKETS	5,009,500

Top 5 Block Trade Symbols by Volume	
Symbol	TSX Block Volume
ENB	3,394,000
MFC	3,390,500
XIU	2,278,300
SU	1,815,100
GUD	1,260,200

TSXV	
Daily Volume	144,709,890
Daily Value	\$90,435,189
Daily Trades	36,022
Daily Symbols Traded	1,116

TSXV ANONYMOUS TRADING	
Daily Volume	63,729,021
Daily Value	\$33,748,360
Average Trade Size	4,394
% TSXV Volume	44.04%



Top 20 TSXV Symbols by Volume		
Symbol	TSXV Volume	TSXV Value
WKG	7,978,001	\$39,905
AZX	7,081,332	\$191,160
HIVE	5,772,931	\$3,814,624
QYOU	5,503,700	\$479,340
AGB	4,361,741	\$9,072,994
LABS	2,812,828	\$19,775,411
WL	2,254,522	\$1,420,947
ACU	2,153,900	\$107,750
GRAT	2,045,815	\$121,099
ADD	1,926,330	\$136,645
AUL	1,802,800	\$54,084
OGI	1,669,133	\$15,739,639
NRTH	1,445,758	\$1,505,122
DASH	1,368,559	\$90,304
SBM	1,362,950	\$463,110
BRC	1,296,850	\$55,930
NCI	1,288,300	\$52,321
FCC	1,174,213	\$171,310
EHT	1,017,000	\$35,960
ZUM	974,910	\$94,892

Top 20 TSXV Symbols by Value		
Symbol	TSXV Volume	TSXV Value
LABS	2,812,828	\$19,775,411
OGI	1,669,133	\$15,739,639
AGB	4,361,741	\$9,072,994
HIVE	5,772,931	\$3,814,624
RIV	554,046	\$2,390,214
EMH	418,983	\$1,557,906
NRTH	1,445,758	\$1,505,122
WL	2,254,522	\$1,420,947
EOG	823,683	\$1,406,487
KHRN	420,059	\$1,359,665
ZENA	694,757	\$1,141,107
HUT	480,221	\$1,109,821
SIL	267,170	\$1,089,202
PCLO	121,497	\$1,009,867
WMD	548,867	\$929,521
FLT	562,695	\$755,053
RTI	692,284	\$690,249
N	948,936	\$689,908
FLWR	92,455	\$633,154
GLXY	243,176	\$560,577

Dark TSX/TSXV Trading			
Volume	11,085,430	Daily Trades	41,616
Value	286,044,341	Daily Symbols Traded	994