



February 7, 2018

For more information, email trading_sales@tsx.com

Visit our blog at <http://exchange.tmx.com/>

Indices	February 7 Close	Previous Close	Change	% Change
S&P/TSX Composite Index	15,330.58			%
S&P/TSX 60 Index	906.87			%
S&P/TSX Venture Composite	830.69			%
S&P/TSX Completion Index	956.74			%
S&P/TSX Smallcap Index	620.87			%

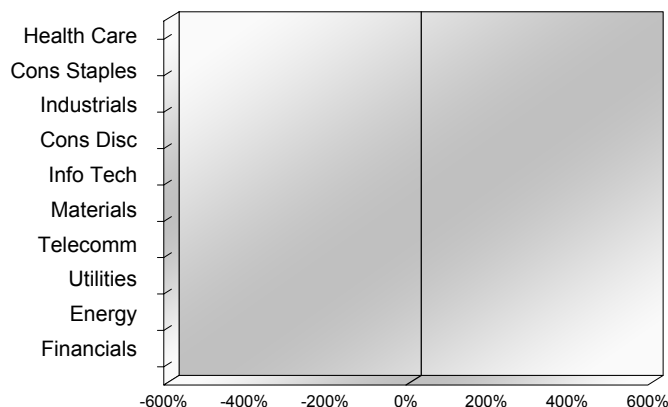
S&P/TSX Composite Index			
Advancers	Decliners	Unchanged	
0	0	0	

S&P/TSX Composite Index			
Top 10 Index Contributors		Top 10 Index Detractors	
Constituent	Index Contribution	Constituent	Index Contribution

S&P/TSX Composite Index			
Top 10 Advancers		Top 10 Decliners	
Constituent	Return	Constituent	Return
	%		%

S&P/TSX Composite Index				
Sector	# of Index Constituents	Weight	Market Cap (\$B)	Index Contribution
Health Care	7	%	\$19.75	
Consumer Staples	11	%	\$77.66	
Industrials	27	%	\$203.97	
Consumer Discretionary	22	%	\$118.58	
Information Technology	12	%	\$75.35	
Materials	54	%	\$240.54	
Telecommunication Services	3	%	\$98.71	
Utilities	15	%	\$78.23	
Energy	50	%	\$396.33	
Financials	27	%	\$745.86	
S&P/TSX Composite Index	228	%	\$2,054.99	

S&P/TSX Composite Index - Sectors Returns



This report is published by TSX Inc. TSX Inc. does not guarantee either the completeness or the accuracy of this information. The information contained in this report is provided for informational purposes only and you agree not to rely upon the information contained in this report for any trading, business or financial purpose. These sheets are printed in Canada and issued by TSX Inc. under the express condition, to which everyone receiving or making use thereof assents, that no liability shall be incurred by TSX Inc. or its affiliated companies or any other vendor or donor, including, without limitation, for reliance on or for any errors or inaccuracies in this report. Neither TMX Group Limited, TSX Inc., nor any of their affiliated companies, guarantees the completeness of the information contained in this document and are not responsible for any errors or omission in or your use of, or reliance on, the information. This publication is under copyright. © 2015 TSX Inc. All rights reserved. Do not copy, distribute, sell or modify this publication without the prior written consent of TSX Inc. www.tmx.com/trading

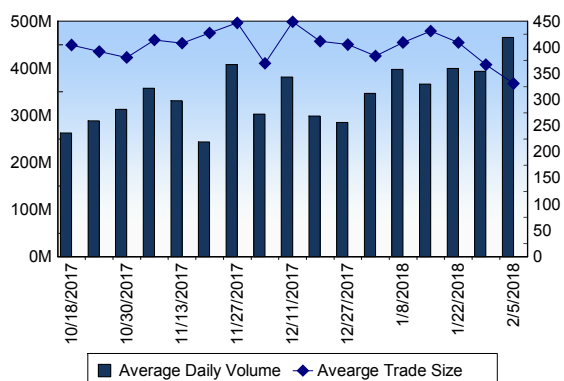
TSX

Daily Volume	426,611,926
Daily Value	\$8,259,100,024
Daily Trades	1,226,318
Daily Symbols Traded	1,934

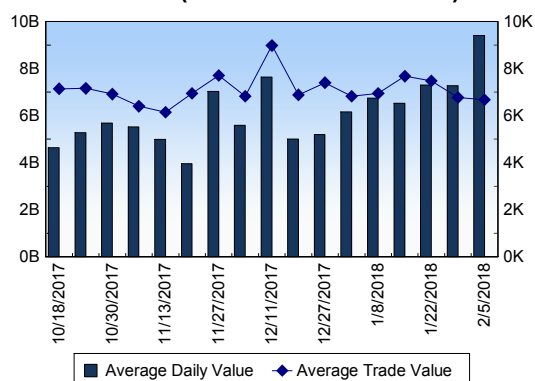
TSX ANONYMOUS TRADING

Daily Volume	135,941,262
Daily Value	\$2,844,323,272
Average Trade Size	304
% TSX Volume	31.87 %

TSX Volume



TSX Value (in Canadian Dollars)



Top 20 TSX Symbols by Volume

Symbol	TSX Volume	TSX Value
ACB	40,818,361	\$477,753,682
WEED	10,058,384	\$296,166,635
BBD.B	8,795,021	\$28,762,006
ENB	7,459,945	\$328,914,161
APH	6,974,594	\$117,324,343
MFC	5,231,728	\$131,920,346
EFN	4,864,153	\$28,029,529
CVE	4,770,003	\$50,027,754
ECA	4,643,031	\$65,372,658
XIU	4,308,887	\$98,644,826
TD	4,273,926	\$306,823,275
NMX	4,149,652	\$7,208,815
AAR.UN	4,116,450	\$33,147,319
TCW	4,014,760	\$13,406,984
PD	3,924,797	\$17,433,528
CNQ	3,749,795	\$146,769,733
VLE	3,730,247	\$26,709,698
HOD	3,645,994	\$24,316,628
TV	3,591,360	\$5,505,594
SU	3,478,482	\$148,619,914

Top 20 TSX Symbols by Value

Symbol	TSX Volume	TSX Value
ACB	40,818,361	\$477,753,682
ENB	7,459,945	\$328,914,161
TD	4,273,926	\$306,823,275
WEED	10,058,384	\$296,166,635
RY	2,592,442	\$262,566,530
BMO	1,785,394	\$174,752,918
BNS	2,167,363	\$169,051,266
CM	1,417,469	\$165,115,878
CNR	1,578,342	\$151,626,435
SU	3,478,482	\$148,619,914
BCE	2,602,364	\$146,933,795
CNQ	3,749,795	\$146,769,733
TRP	2,521,920	\$138,026,203
MFC	5,231,728	\$131,920,346
APH	6,974,594	\$117,324,343
XIU	4,308,887	\$98,644,826
BAM.A	1,923,778	\$95,141,709
MG	1,227,978	\$84,265,173
CP	365,354	\$80,758,887
NA	1,164,212	\$72,565,944

ETF Trading

Daily Volume	39,574,476	Average Trade Value	\$9,931
Daily Value	\$752,625,719	Average Trade Size	522
# Trades	75,788	# of ETFs Traded	544

Top 10 ETFs by TSX Volume

Symbol	Market Volume	Market Value
XIU	4,308,887	\$98,644,826
HOD	3,645,994	\$24,316,628
HNU	3,079,792	\$11,613,314
HVI	2,409,972	\$5,544,894
HOU	2,371,702	\$21,072,885
XSP	2,084,783	\$63,857,454
HMMJ	1,392,833	\$27,148,891
XEG	1,058,401	\$11,729,824
XFN	1,033,134	\$38,566,212
ZSP	774,425	\$28,867,670

Top 10 ETFs by TSX Value

Symbol	Market Volume	Market Value
XIU	4,308,887	\$98,644,826
XSP	2,084,783	\$63,857,454
XFN	1,033,134	\$38,566,212
ZSP	774,425	\$28,867,670
HMMJ	1,392,833	\$27,148,891
HOD	3,645,994	\$24,316,628
HOU	2,371,702	\$21,072,885
HXU	557,392	\$18,370,334
XUS	405,425	\$17,111,399
ZEB	570,662	\$16,525,643

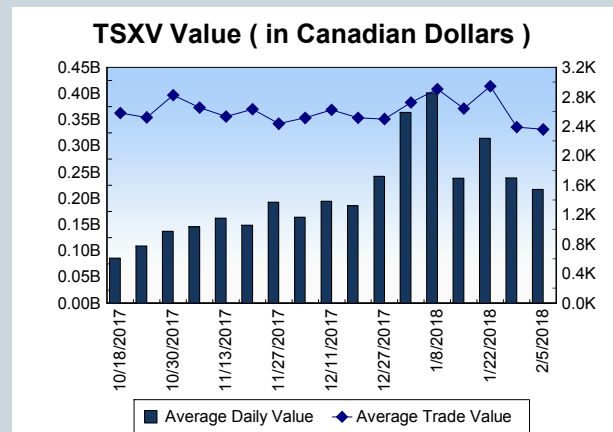
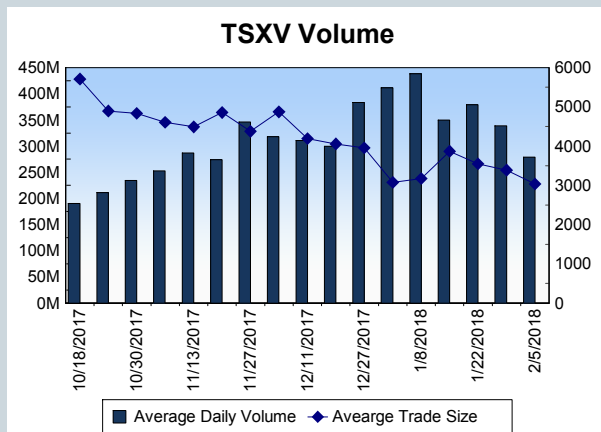
Block Trades	Non Block Trades
1,238	1,225,080

Top 5 Block Trade Brokers by Volume	
Broker	TSX Block Volume
TD SECURITIES INC.	10,552,100
NATIONAL BANK FINANCIAL	7,934,800
CANACCORD GENUITY CORI	6,047,600
CIBC WORLD MARKETS INC.	6,035,600
SCOTIA CAPITAL INC.	5,261,000

Top 5 Block Trade Symbols by Volume	
Symbol	TSX Block Volume
ENB	4,117,500
AAR.UN	3,560,700
ACB	2,462,100
TV	1,421,000
BBD.B	1,296,400

TSXV	
Daily Volume	283,763,748
Daily Value	\$222,885,371
Daily Trades	87,998
Daily Symbols Traded	1,293

TSXV ANONYMOUS TRADING	
Daily Volume	104,387,772
Daily Value	\$75,790,556
Average Trade Size	3,609
% TSXV Volume	36.79%



Top 20 TSXV Symbols by Volume		
Symbol	TSXV Volume	TSXV Value
APC	11,025,603	\$1,276,580
SRJ	8,806,066	\$813,806
HIP	8,112,256	\$10,090,916
LG	6,568,737	\$2,062,898
RVL	6,242,199	\$170,066
ADK	5,930,834	\$538,686
RB.H	5,052,606	\$50,584
WKG	4,721,121	\$203,735
CBW.WT	4,416,911	\$1,875,386
CBW	4,373,217	\$8,472,510
VVC	4,076,000	\$232,008
HVT	3,679,722	\$4,708,396
TGX	3,476,000	\$34,653
THCX	3,250,573	\$12,715,617
FIRE	3,247,840	\$7,340,872
HRC	3,233,200	\$32,332
ABCN	3,183,927	\$8,857,318
HIVE	3,128,218	\$6,827,518
LTV	2,788,891	\$672,244
NGH.H	2,772,932	\$94,169

Top 20 TSXV Symbols by Value		
Symbol	TSXV Volume	TSXV Value
MJN	2,753,986	\$26,600,001
EMH	2,765,621	\$20,494,694
THCX	3,250,573	\$12,715,617
OGI	2,728,809	\$11,864,822
HIP	8,112,256	\$10,090,916
ABCN	3,183,927	\$8,857,318
CBW	4,373,217	\$8,472,510
FIRE	3,247,840	\$7,340,872
HIVE	3,128,218	\$6,827,518
PAT	2,510,921	\$4,726,465
HVT	3,679,722	\$4,708,396
LIX	1,698,756	\$4,314,730
RHT	2,093,866	\$3,535,019
RTI	2,187,383	\$3,533,914
IMH	1,619,460	\$3,197,185
EMC	1,801,823	\$3,089,603
FLT	1,465,168	\$2,900,026
SCYB	100,414	\$2,651,129
NUU	372,907	\$2,534,395
ICC	1,633,733	\$2,516,058

Dark TSX/TSXV Trading			
Volume	15,741,380	Daily Trades	60,422
Value	399,292,873	Daily Symbols Traded	1,164