

## Going Public\* Count: 143 (TSXV:69 TSX:74)

(\*Includes New Listings, IPOs, CPC IPOs, QTs, RTOs, Graduates and Other)

## 87 Companies+8 CPCs+35 ETFs+13 Structured Products

listed on TSX Venture Exchange (69) and TSX (75) YTD July 2014

## 8 New International Listings YTD July 2014

### TSXV:

**Australia:** West African Resources Limited, Mining, Australia

**USA:** OneRoof Energy Group, Inc., Clean Technology & Renewable Energy, San Diego, CA

**Asia:** New Era Minerals Inc., Mining, Hong Kong

**Other:** Petro-Victory Energy Corp., Oil & Gas, British Virgin Islands

### TSX:

**Africa:** Atlatsa Resources Corporation, Mining, South Africa

**Australia:** Champion Iron Limited, Mining, Australia

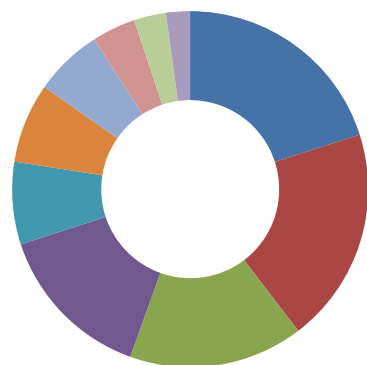
**UK/Europe:** Endo International plc, Life Sciences, Ireland

**USA:** Northern Power Systems Corp., Clean Technology & Renewable Energy, Barre, VT

## Equity Capital Raised by Sector

### TSX | TSXV

YTD July 2014



## BY THE NUMBERS

**\$37.1 billion** Equity Capital Raised on TSXV and TSX YTD July 2014

**\$3.4 million**

Average financing size on TSXV

**\$84.4 million**

Average financing size on TSX

Check out our Daily Trading Reports

<http://www.tmx.com/en/trading/reports/>

Each morning, a daily report is available that summarizes the previous day's trading activity on TSXV and TSX.

Check out our Listing Statistics Website

<http://www.tmx.com/mig>

Follow us on Twitter:

<http://twitter.com/tmxgroup>

Register here to receive the monthly MiG Report in your inbox

<http://tmx.com/en/mig/register.html>

### Contact:

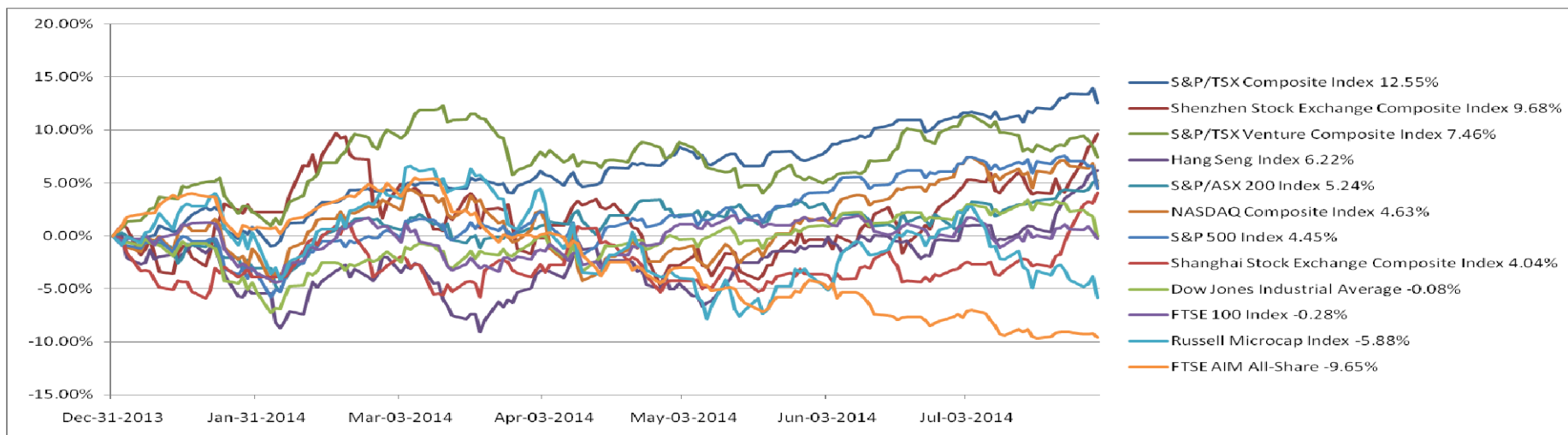
Gina Pappano, Head, Market Intelligence / 416-947-4272 / gina.pappano@tsx.com

Cheryl Mascarenhas, Analyst / 416-947-4774 / cheryl.mascarenhas@tmx.com

## What's Going on Generally YTD/as at July 31, 2014

| YTD/as at July 31, 2014                     | TSX Venture Exchange | TSXV Last Year | % Change    | Toronto Stock Exchange | TSX Last Year   | % Change   | TSXV and TSX    | TSXV and TSX Last Year | % Change    |
|---|----------------------|----------------|-------------|------------------------|-----------------|------------|-----------------|------------------------|-------------|
| Number of Issuers                           | 2,024                | 2,195          | -8%         | 1,506                  | 1,555           | -3%        | 3,530           | 3,750                  | -6%         |
| QMV (C\$ Billions)                          | 34.1                 | 32.3           | 5%          | 2,602.0                | 2,132.7         | 22%        | 2,636.1         | 2,165.0                | 22%         |
| <b>Going Public Activity/New Listings</b>   | <b>69</b>            | <b>98</b>      | <b>-30%</b> | <b>74</b>              | <b>61</b>       | <b>21%</b> | <b>143</b>      | <b>159</b>             | <b>-10%</b> |
| IPOs (ex CPCs/ETFs/SPs)                     | 4                    | 8              | -50%        | 6                      | 11              | -45%       | 10              | 19                     | -47%        |
| CPC IPOs                                    | 8                    | 25             | -68%        |                        |                 |            | 8               | 25                     | -68%        |
| ETF & SP IPOs                               |                      |                |             | 47                     | 34              | 38%        | 47              | 34                     | 38%         |
| Qualifying Transactions (QTs)               | 25                   | 43             | -42%        |                        |                 |            | 25              | 43                     | -42%        |
| TSXV RTOs / TSX Substitutionals             | 9                    | 9              | 0%          |                        |                 |            | 9               | 9                      | 0%          |
| NEX RTOs                                    | 1                    | 2              | -50%        |                        |                 |            | 1               | 2                      |             |
| Grads                                       |                      |                |             | 15                     | 11              | 36%        | 15              | 11                     | 36%         |
| Other                                       | 22                   | 11             | 100%        | 6                      | 5               | 20%        | 28              | 16                     | 75%         |
| <b>Equity Capital Raised (C\$ Millions)</b> | <b>3,324.4</b>       | <b>2,041.0</b> | <b>63%</b>  | <b>33,746.4</b>        | <b>23,141.0</b> | <b>46%</b> | <b>37,070.8</b> | <b>25,182.1</b>        | <b>47%</b>  |
| Initial Public Offerings                    | 66.5                 | 69.5           | -4%         | 3,688.4                | 3,382.0         | 9%         | 3,754.9         | 3,451.5                | 9%          |
| Public Offerings/Supplementary              | 1,029.0              | 628.0          | 64%         | 26,959.8               | 17,756.1        | 52%        | 27,988.9        | 18,384.1               | 52%         |
| Private Placements                          | 2,228.9              | 1,343.5        | 66%         | 3,098.2                | 2,002.9         | 55%        | 5,327.1         | 3,346.4                | 59%         |
| Number of Financings                        | 991                  | 916            | 8%          | 400                    | 307             | 30%        | 1,391           | 1,223                  | 14%         |
| Volume Traded (Billions of Shares)          | 23.9                 | 21.1           | 13%         | 45.6                   | 47.0            | -3%        | 69.6            | 68.1                   | 2%          |
| Value Traded (C\$ Billions)                 | 9.9                  | 7.9            | 25%         | 682.6                  | 703.5           | -3%        | 692.5           | 711.4                  | -3%         |
| # of Trades (Millions)                      | 3.7                  | 3.2            | 15%         | 103.9                  | 99.1            | 5%         | 107.6           | 102.3                  | 5%          |
| S&P/TSX/TSXV Composite Indices              | 1,001.5              | 917.3          | 9%          | 15,330.7               | 12,486.6        | 23%        |                 |                        |             |

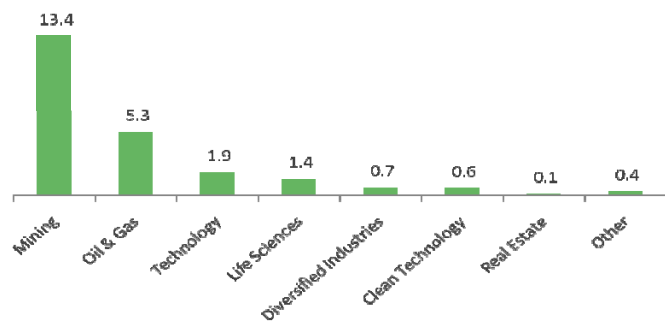
## Comparison of Major Index Performance -- YTD July 31, 2014 (Source: Capital IQ)



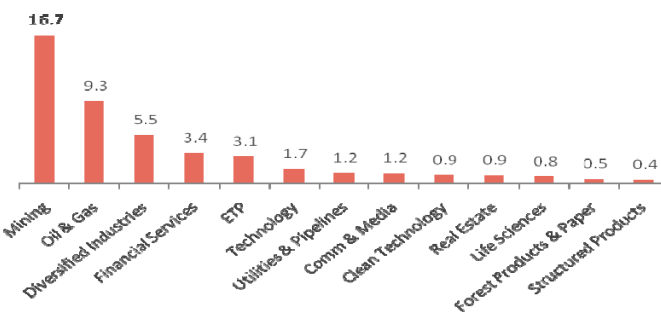
## What's Listed on TSX and TSX Venture Exchange as at July 31, 2014

| Sector                              | TSX Venture Exchange |             |                                |             | Toronto Stock Exchange |             |                                |             | TSXV and TSX   |             |                                |             |
|-------------------------------------|----------------------|-------------|--------------------------------|-------------|------------------------|-------------|--------------------------------|-------------|----------------|-------------|--------------------------------|-------------|
|                                     | Listed Issuers       |             | Total Market Cap (\$ Millions) |             | Listed Issuers         |             | Total Market Cap (\$ Millions) |             | Listed Issuers |             | Total Market Cap (\$ Millions) |             |
| Clean Technology & Renewable Energy | 76                   | 4%          | 1,154                          | 3%          | 44                     | 3%          | 25,590                         | 1%          | 120            | 3%          | 26,744                         | 1%          |
| Comm. & Media                       | 17                   | 1%          | 915                            | 3%          | 32                     | 2%          | 158,282                        | 6%          | 49             | 1%          | 159,198                        | 6%          |
| CPC                                 | 74                   | 4%          | 35                             | 0.1%        |                        |             |                                |             | 74             | 2%          | 35                             | 0%          |
| Diversified Industries              | 118                  | 6%          | 2,360                          | 7%          | 203                    | 13%         | 465,962                        | 18%         | 321            | 9%          | 468,321                        | 18%         |
| ETFs                                |                      |             |                                |             | 313                    | 21%         | 79,084                         | 3%          | 313            | 9%          | 79,084                         | 3%          |
| Financial Services                  | 46                   | 2%          | 3,008                          | 9%          | 79                     | 5%          | 725,321                        | 28%         | 125            | 4%          | 728,328                        | 28%         |
| Forest Products & Paper             | 3                    | 0.1%        | 49                             | 0.1%        | 17                     | 1%          | 20,926                         | 1%          | 20             | 1%          | 20,975                         | 1%          |
| Life Sciences                       | 68                   | 3%          | 1,656                          | 5%          | 42                     | 3%          | 61,359                         | 2%          | 110            | 3%          | 63,015                         | 2%          |
| Mining                              | 1,233                | 61%         | 13,457                         | 40%         | 302                    | 20%         | 275,427                        | 11%         | 1,535          | 43%         | 288,884                        | 11%         |
| Oil & Gas                           | 240                  | 12%         | 8,253                          | 24%         | 108                    | 7%          | 433,092                        | 17%         | 348            | 10%         | 441,345                        | 17%         |
| Real Estate                         | 40                   | 2%          | 826                            | 2%          | 71                     | 5%          | 83,823                         | 3%          | 111            | 3%          | 84,649                         | 3%          |
| Structured Products                 |                      |             |                                |             | 210                    | 14%         | 27,849                         | 1%          | 210            | 6%          | 27,849                         | 1%          |
| Technology                          | 106                  | 5%          | 2,192                          | 6%          | 60                     | 4%          | 69,919                         | 3%          | 166            | 5%          | 72,111                         | 3%          |
| Utilities & Pipelines               | 3                    | 0.1%        | 159                            | 0.5%        | 25                     | 2%          | 175,360                        | 7%          | 28             | 1%          | 175,519                        | 7%          |
| <b>TOTAL</b>                        | <b>2,024</b>         | <b>100%</b> | <b>34,064</b>                  | <b>100%</b> | <b>1,506</b>           | <b>100%</b> | <b>2,601,995</b>               | <b>100%</b> | <b>3,530</b>   | <b>100%</b> | <b>2,636,059</b>               | <b>100%</b> |
| <b>Region</b>                       |                      |             |                                |             |                        |             |                                |             |                |             |                                |             |
| British Columbia                    | 1,038                | 51%         | 11,943                         | 35%         | 176                    | 12%         | 180,988                        | 7%          | 1,214          | 34%         | 192,931                        | 7%          |
| Alberta                             | 271                  | 13%         | 8,960                          | 26%         | 195                    | 13%         | 716,959                        | 28%         | 466            | 13%         | 725,919                        | 28%         |
| Prairies                            | 28                   | 1%          | 489                            | 1%          | 27                     | 2%          | 101,035                        | 4%          | 55             | 2%          | 101,524                        | 4%          |
| Ontario                             | 395                  | 20%         | 7,710                          | 23%         | 837                    | 56%         | 1,060,761                      | 41%         | 1,232          | 35%         | 1,068,471                      | 41%         |
| Quebec                              | 131                  | 6%          | 1,592                          | 5%          | 106                    | 7%          | 353,722                        | 14%         | 237            | 7%          | 355,315                        | 13%         |
| Atlantic Canada                     | 23                   | 1%          | 210                            | 1%          | 26                     | 2%          | 34,095                         | 1%          | 49             | 1%          | 34,305                         | 1%          |
| International                       | 138                  | 7%          | 3,160                          | 9%          | 139                    | 9%          | 154,434                        | 6%          | 277            | 8%          | 157,594                        | 6%          |
| International Breakdown:            |                      |             |                                |             |                        |             |                                |             |                |             |                                |             |
| USA                                 | 79                   | 57%         | 1,726                          | 55%         | 66                     | 47%         | 99,988                         | 65%         | 145            | 52%         | 101,713                        | 65%         |
| Australia/NZ/PNG                    | 10                   | 7%          | 119                            | 4%          | 19                     | 14%         | 2,712                          | 2%          | 29             | 10%         | 2,831                          | 2%          |
| Asia                                | 27                   | 20%         | 242                            | 8%          | 10                     | 7%          | 3,424                          | 2%          | 37             | 13%         | 3,666                          | 2%          |
| UK/Europe                           | 8                    | 6%          | 281                            | 9%          | 18                     | 13%         | 22,459                         | 15%         | 26             | 9%          | 22,740                         | 14%         |
| Africa                              | 1                    | 1%          | 111                            | 4%          | 6                      | 4%          | 1,930                          | 1%          | 7              | 3%          | 2,041                          | 1%          |
| Latin America                       | 9                    | 7%          | 274                            | 9%          | 11                     | 8%          | 8,320                          | 5%          | 20             | 7%          | 8,595                          | 5%          |
| Other                               | 4                    | 3%          | 406                            | 13%         | 9                      | 6%          | 15,601                         | 10%         | 13             | 5%          | 16,007                         | 10%         |
| <b>TOTAL</b>                        | <b>2,024</b>         | <b>100%</b> | <b>34,064</b>                  | <b>100%</b> | <b>1,506</b>           | <b>100%</b> | <b>2,601,995</b>               | <b>100%</b> | <b>3,530</b>   | <b>100%</b> | <b>2,636,059</b>               | <b>100%</b> |

Volume Traded YTD July 31, 2014 on TSXV by Sector (Billions of Shares)



Volume Traded YTD July 31, 2014 on TSX by Sector (Billions of Shares)



\*Other includes Comm. & Media, Financial Services, Forest Products, Utilities & Pipelines & CPCs.

Check out our Daily Trading Reports at <http://www.tmx.com/en/trading/reports/>

**What's New on TSX and TSX Venture Exchange YTD July 31, 2014**

| TSXV and TSX<br>Sector        | YTD July-2014 |          |          |            | YTD July-2013 |           |          |            |
|-------------------------------|---------------|----------|----------|------------|---------------|-----------|----------|------------|
|                               | Canada        | US       | Int'l    | Total      | Canada        | US        | Int'l    | Total      |
| Clean Tech & Renewable Energy | 3             | 3        | -        | 6          | -             | -         | -        | -          |
| Comm. & Media                 | -             | -        | -        | -          | 1             | -         | -        | 1          |
| CPC                           | 8             | -        | -        | 8          | 25            | -         | -        | 25         |
| Diversified Industries        | 5             | -        | -        | 5          | 4             | -         | -        | 4          |
| ETFs                          | 35            | -        | -        | 35         | 19            | -         | -        | 19         |
| Financial Services            | 6             | -        | -        | 6          | 2             | -         | -        | 2          |
| Forest Products & Paper       | 1             | -        | -        | 1          | 2             | -         | -        | 2          |
| Life Sciences                 | 9             | -        | 1        | 10         | 2             | 1         | -        | 3          |
| Mining                        | 25            | -        | 4        | 29         | 45            | 3         | 1        | 49         |
| Oil & Gas                     | 12            | -        | 1        | 13         | 8             | -         | 1        | 9          |
| Real Estate                   | 7             | -        | -        | 7          | 14            | 3         | 2        | 19         |
| Structured Products           | 13            | -        | -        | 13         | 15            | -         | -        | 15         |
| Technology                    | 10            | -        | -        | 10         | 9             | 3         | -        | 12         |
| Utilities & Pipelines         | -             | -        | -        | -          | -             | -         | -        | -          |
| <b>Total</b>                  | <b>134</b>    | <b>3</b> | <b>6</b> | <b>143</b> | <b>146</b>    | <b>10</b> | <b>4</b> | <b>160</b> |

| TSX Venture Exchange<br>Sector | Going Public Activity |          |          |           |               |          |          |           | IPOs          |          |          |           | QTs           |          |          |           | RTOs          |          |          |           | Other         |          |          |           |
|--------------------------------|-----------------------|----------|----------|-----------|---------------|----------|----------|-----------|---------------|----------|----------|-----------|---------------|----------|----------|-----------|---------------|----------|----------|-----------|---------------|----------|----------|-----------|
|                                | YTD July-2014         |          |          |           | YTD July-2013 |          |          |           | YTD July-2014 |          |          |           | YTD July-2014 |          |          |           | YTD July-2014 |          |          |           | YTD July-2014 |          |          |           |
|                                | Canada                | US       | Int'l    | Total     | Canada        | US       | Int'l    | Total     | Canada        | US       | Int'l    | Total     | Canada        | US       | Int'l    | Total     | Canada        | US       | Int'l    | Total     | Canada        | US       | Int'l    | Total     |
| Clean Tech & Renewable Energy  | 2                     | 2        | -        | 4         | -             | -        | -        | -         | 1             | -        | -        | 1         | 1             | 2        | -        | -         | -             | -        | -        | -         | -             | -        | -        | -         |
| Comm. & Media                  | -                     | -        | -        | -         | 1             | -        | -        | 1         | -             | -        | -        | -         | -             | -        | -        | -         | -             | -        | -        | -         | -             | -        | -        | -         |
| CPC                            | 8                     | -        | -        | 8         | 25            | -        | -        | 25        | 8             | -        | -        | 8         | -             | -        | -        | -         | -             | -        | -        | -         | -             | -        | -        | -         |
| Diversified Industries         | 3                     | -        | -        | 3         | 3             | -        | -        | 3         | -             | -        | -        | -         | 3             | -        | -        | -         | -             | -        | -        | -         | -             | -        | -        | -         |
| ETFs                           | -                     | -        | -        | -         | -             | -        | -        | -         | -             | -        | -        | -         | -             | -        | -        | -         | -             | -        | -        | -         | -             | -        | -        | -         |
| Financial Services             | 5                     | -        | -        | 5         | 2             | -        | -        | 2         | -             | -        | -        | -         | -             | -        | -        | 2         | -             | -        | 2        | 3         | -             | -        | 3        | 3         |
| Forest Products & Paper        | -                     | -        | -        | -         | 1             | -        | -        | 1         | -             | -        | -        | -         | -             | -        | -        | -         | -             | -        | -        | -         | -             | -        | -        | -         |
| Life Sciences                  | 5                     | -        | -        | 5         | 2             | 1        | -        | 3         | -             | -        | -        | 2         | -             | -        | 2        | -         | -             | -        | -        | 3         | -             | -        | 3        | 3         |
| Mining                         | 22                    | -        | 2        | 24        | 42            | 2        | 1        | 45        | -             | -        | -        | 8         | 1             | 9        | 2        | 2         | 12            | -        | 2        | -         | 1             | 13       | 13       |           |
| Oil & Gas                      | 6                     | -        | 1        | 7         | 4             | -        | 1        | 5         | 1             | 1        | 2        | 2         | -             | 2        | 1        | 2         | -             | 1        | 2        | -         | -             | -        | 2        |           |
| Real Estate                    | 6                     | -        | -        | 6         | 5             | 1        | -        | 6         | 1             | -        | 1        | 3         | -             | 3        | 2        | 2         | -             | -        | -        | -         | -             | -        | -        |           |
| Structured Products            | -                     | -        | -        | -         | -             | -        | -        | -         | -             | -        | -        | -         | -             | -        | -        | -         | -             | -        | -        | -         | -             | -        | -        | -         |
| Technology                     | 7                     | -        | -        | 7         | 5             | 3        | -        | 8         | -             | -        | -        | 3         | -             | 3        | 3        | 3         | 1             | -        | 3        | 1         | -             | -        | 1        |           |
| Utilities & Pipelines          | -                     | -        | -        | -         | -             | -        | -        | -         | -             | -        | -        | -         | -             | -        | -        | -         | -             | -        | -        | -         | -             | -        | -        | -         |
| <b>Total</b>                   | <b>64</b>             | <b>2</b> | <b>3</b> | <b>69</b> | <b>90</b>     | <b>7</b> | <b>2</b> | <b>99</b> | <b>11</b>     | <b>-</b> | <b>1</b> | <b>12</b> | <b>22</b>     | <b>2</b> | <b>1</b> | <b>25</b> | <b>10</b>     | <b>-</b> | <b>-</b> | <b>10</b> | <b>21</b>     | <b>-</b> | <b>1</b> | <b>22</b> |

| Toronto Stock Exchange<br>Sector | IPO           |          |          |           |               |          |          |           | Graduates     |          |          |           | Other         |          |          |           |          |          |          |          |
|----------------------------------|---------------|----------|----------|-----------|---------------|----------|----------|-----------|---------------|----------|----------|-----------|---------------|----------|----------|-----------|----------|----------|----------|----------|
|                                  | YTD July-2014 |          |          |           | YTD July-2013 |          |          |           | YTD July-2014 |          |          |           | YTD July-2014 |          |          |           |          |          |          |          |
|                                  | Canada        | US       | Int'l    | Total     | Canada        | US       | Int'l    | Total     | Canada        | US       | Int'l    | Total     | Canada        | US       | Int'l    | Total     |          |          |          |          |
| Clean Tech & Renewable Energy    | 1             | 1        | -        | 2         | -             | -        | -        | -         | 1             | -        | -        | 1         | 1             | -        | -        | -         |          |          |          |          |
| Comm. & Media                    | -             | -        | -        | -         | -             | -        | -        | -         | -             | -        | -        | -         | -             | -        | -        | -         |          |          |          |          |
| CPC                              | -             | -        | -        | -         | -             | -        | -        | -         | -             | -        | -        | -         | -             | -        | -        | -         |          |          |          |          |
| Diversified Industries           | 2             | -        | -        | 2         | 1             | -        | -        | 1         | -             | -        | -        | 2         | -             | -        | -        |           |          |          |          |          |
| ETFs                             | 35            | -        | -        | 35        | 19            | -        | -        | 19        | 35            | -        | -        | 35        | -             | -        | -        |           |          |          |          |          |
| Financial Services               | 1             | -        | -        | 1         | -             | -        | -        | -         | 1             | -        | -        | -         | -             | -        | -        |           |          |          |          |          |
| Forest Products & Paper          | 1             | -        | -        | 1         | 1             | -        | -        | 1         | -             | -        | -        | 1         | -             | -        | -        |           |          |          |          |          |
| Life Sciences                    | 4             | -        | 1        | 5         | -             | -        | -        | -         | -             | -        | -        | 4         | -             | 1        | 1        |           |          |          |          |          |
| Mining                           | 3             | -        | 2        | 5         | 3             | 1        | -        | 4         | -             | -        | -        | 1         | 1             | 2        | 3        |           |          |          |          |          |
| Oil & Gas                        | 6             | -        | -        | 6         | 4             | -        | -        | 4         | 2             | -        | -        | 4         | -             | -        | -        |           |          |          |          |          |
| Real Estate                      | 1             | -        | -        | 1         | 9             | 2        | 2        | 13        | -             | -        | -        | -         | -             | 1        | 1        |           |          |          |          |          |
| Structured Products              | 13            | -        | -        | 13        | 15            | -        | -        | 15        | 12            | -        | -        | -         | -             | 1        | 1        |           |          |          |          |          |
| Technology                       | 3             | -        | -        | 3         | 4             | -        | -        | 4         | 2             | -        | -        | 1         | -             | 1        | -        |           |          |          |          |          |
| Utilities & Pipelines            | -             | -        | -        | -         | -             | -        | -        | -         | -             | -        | -        | -         | -             | -        | -        |           |          |          |          |          |
| <b>Total</b>                     | <b>70</b>     | <b>1</b> | <b>3</b> | <b>74</b> | <b>56</b>     | <b>3</b> | <b>2</b> | <b>61</b> | <b>53</b>     | <b>-</b> | <b>-</b> | <b>53</b> | <b>13</b>     | <b>1</b> | <b>1</b> | <b>15</b> | <b>4</b> | <b>-</b> | <b>2</b> | <b>6</b> |

**What's Financed on TSX and TSX Venture Exchange by Sector (YTD July 31, 2014)**

| Sector                              | TSX Venture Exchange (C\$Millions) |                |                |                | Toronto Stock Exchange (C\$ Millions) |                 |                |                 | TSXV and TSX (C\$ Millions) |                 |                |                 |
|-------------------------------------|------------------------------------|----------------|----------------|----------------|---------------------------------------|-----------------|----------------|-----------------|-----------------------------|-----------------|----------------|-----------------|
|                                     | IPO                                | PO             | PP             | Total          | IPO                                   | PO*             | PP             | Total           | IPO                         | PO              | PP             | Total           |
| Clean Technology & Renewable Energy | 11.0                               | -              | 64.7           | 75.7           | 115.0                                 | 1,111.3         | 162.4          | 1,388.7         | 126.0                       | 1,111.3         | 227.1          | 1,464.4         |
| Comm. & Media                       | -                                  | 9.1            | 11.1           | 20.2           | -                                     | -               | -              | -               | -                           | 9.1             | 11.1           | 20.2            |
| CPC                                 | 4.9                                | -              | 5.3            | 10.2           | 4.9                                   | -               | 5.3            | 10.2            | 4.9                         | -               | 5.3            | 10.2            |
| Diversified Industries              | -                                  | 111.5          | 65.0           | 176.4          | -                                     | 1,889.2         | 624.7          | 2,513.9         | -                           | 2,000.7         | 689.7          | 2,690.3         |
| ETFs                                | -                                  | -              | -              | -              | 165.9                                 | 2.5             | -              | 168.4           | 165.9                       | 2.5             | -              | 168.4           |
| Financial Services                  | -                                  | 28.8           | 154.9          | 183.7          | 252.0                                 | 6,982.1         | 16.5           | 7,250.6         | 252.0                       | 7,010.9         | 171.4          | 7,434.4         |
| Forest Products & Paper             | -                                  | -              | 3.3            | 3.3            | -                                     | 63.4            | -              | 63.4            | -                           | 63.4            | 3.3            | 66.7            |
| Life Sciences                       | -                                  | 142.5          | 394.0          | 536.5          | -                                     | 193.9           | 82.2           | 276.2           | -                           | 336.4           | 476.3          | 812.7           |
| Mining                              | -                                  | 167.5          | 874.9          | 1,042.4        | -                                     | 4,041.6         | 787.1          | 4,828.7         | -                           | 4,209.1         | 1,662.0        | 5,871.1         |
| Oil & Gas                           | 27.3                               | 440.0          | 508.1          | 975.4          | 1,624.0                               | 4,139.4         | 516.3          | 6,279.7         | 1,651.3                     | 4,579.4         | 1,024.4        | 7,255.1         |
| Real Estate                         | 23.2                               | 74.7           | 50.1           | 148.1          | -                                     | 883.8           | 47.4           | 931.2           | 23.2                        | 958.6           | 97.5           | 1,079.2         |
| Structured Products                 | -                                  | -              | -              | -              | 1,436.4                               | 689.6           | 10.5           | 2,136.5         | 1,436.4                     | 689.6           | 10.5           | 2,136.5         |
| Technology                          | -                                  | 54.9           | 97.4           | 152.4          | 95.0                                  | 1,790.7         | 645.1          | 2,530.9         | 95.0                        | 1,845.7         | 742.6          | 2,683.2         |
| Utilities & Pipelines               | -                                  | -              | -              | -              | -                                     | 5,172.3         | 206.0          | 5,378.3         | -                           | 5,172.3         | 206.0          | 5,378.3         |
| <b>TOTAL</b>                        | <b>66.5</b>                        | <b>1,029.0</b> | <b>2,228.9</b> | <b>3,324.4</b> | <b>3,688.4</b>                        | <b>26,959.8</b> | <b>3,098.2</b> | <b>33,746.4</b> | <b>3,754.9</b>              | <b>27,988.9</b> | <b>5,327.1</b> | <b>37,070.8</b> |

\*Includes supplementary & secondary offerings

**Top 10 Financings for the Month of July 2014**

**TSXV Top 10 Financings**

1. The Westaim Corporation, Financial Services - \$135M Private Placement
2. PanTerra Resource Corp., Oil & Gas - \$130M Private Placement
3. Madalena Energy Inc., Oil & Gas - \$58M Public Offering
4. Input Capital Corp., Diversified Industries - \$46M Public Offering
5. Pure Multi-Family REIT LP, Real Estate - \$33M Public Offering
6. Tribute Pharmaceuticals Canada Inc., Life Sciences - \$26M Public Offering
7. Petro-Victory Energy Corp., Oil & Gas - \$25M Initial Public Offering
8. Starlight U.S. Multi-Family (No. 3) Core Fund, Real Estate - \$23M Initial Public Offering
9. Terrace Energy Corp., Oil & Gas - \$20M Public Offering
10. Edgefront Real Estate Investment Trust, Real Estate - \$18M Public Offering

**TSX Top 10 Financings**

1. Amaya Gaming Group Inc., Technology - \$640M Private Placement
2. The Toronto-Dominion Bank, Financial Services - \$500M Secondary Offering
3. Paramount Resources Ltd., Oil & Gas - \$350M Secondary Offering/Private Placement
4. Enbridge Inc., Utilities & Pipelines - \$350M Secondary Offering
5. Bank of Montreal, Financial Services - \$300M Secondary Offering
6. Oryx Petroleum Corporation Limited, Oil & Gas - \$224M Secondary Offering
7. Bonavista Energy Corporation, Oil & Gas - \$201M Secondary Offering
8. AutoCanada Inc., Diversified Industries - \$200M Secondary Offering
9. AltaGas Ltd., Diversified Industries - \$200M Secondary Offering
10. Partners Value Split Corp., Structured Products - \$200M Secondary Offering

**What's Happening by Sector (YTD July 31, 2014)**

|                             | TSX Venture    | TSX             | TSXV and TSX           |
|-----------------------------|----------------|-----------------|------------------------|
| <b>Mining</b>               |                |                 |                        |
| Number of Issuers           | 1,233          | 302             | <b>1,535</b>           |
| QMV (C\$)                   | 13,457,201,038 | 275,426,524,920 | <b>288,883,725,958</b> |
| New Listings                | 24             | 5               | <b>29</b>              |
| Equity Capital Raised (C\$) | 1,042,416,533  | 4,828,675,780   | <b>5,871,092,313</b>   |
| Number of Financings        | 757            | 132             | <b>889</b>             |
| Volume Traded               | 13,431,674,676 | 16,708,567,963  | <b>30,140,242,639</b>  |
| Value Traded (C\$)          | 2,631,281,351  | 104,975,624,775 | <b>107,606,906,125</b> |
| # of Trades                 | 1,540,227      | 25,971,835      | <b>27,512,062</b>      |
| <b>Oil and Gas</b>          |                |                 |                        |
| Number of Issuers           | 240            | 108             | <b>348</b>             |
| QMV (C\$)                   | 8,253,449,044  | 433,091,810,323 | <b>441,345,259,367</b> |
| New Listings                | 7              | 6               | <b>13</b>              |
| Equity Capital Raised (C\$) | 975,446,631    | 6,279,689,871   | <b>7,255,136,502</b>   |
| Number of Financings        | 111            | 45              | <b>156</b>             |
| Volume Traded               | 5,331,471,539  | 9,296,033,057   | <b>14,627,504,596</b>  |
| Value Traded (C\$)          | 4,402,692,127  | 138,915,613,572 | <b>143,318,305,699</b> |
| # of Trades                 | 1,070,649      | 22,720,554      | <b>23,791,203</b>      |
| <b>Energy Services</b>      |                |                 |                        |
| Number of Issuers           | 33             | 45              | <b>78</b>              |
| QMV (C\$)                   | 1,520,064,570  | 48,495,987,550  | <b>50,016,052,120</b>  |
| New Listings                | -              | -               | <b>-</b>               |
| Equity Capital Raised (C\$) | 83,736,932     | 351,596,450     | <b>435,333,382</b>     |
| Number of Financings        | 11             | 6               | <b>17</b>              |
| Volume Traded               | 361,875,427    | 1,465,224,437   | <b>1,827,099,864</b>   |
| Value Traded (C\$)          | 401,578,959    | 17,435,082,975  | <b>17,836,661,934</b>  |
| # of Trades                 | 110,659        | 3,998,986       | <b>4,109,645</b>       |
| <b>Financial Services</b>   |                |                 |                        |
| Number of Issuers           | 46             | 79              | <b>125</b>             |
| QMV (C\$)                   | 3,007,763,223  | 725,320,651,133 | <b>728,328,414,357</b> |
| New Listings                | 5              | 1               | <b>6</b>               |
| Equity Capital Raised (C\$) | 183,706,201    | 7,250,649,583   | <b>7,434,355,784</b>   |
| Number of Financings        | 12             | 30              | <b>42</b>              |
| Volume Traded               | 108,433,791    | 3,429,873,094   | <b>3,538,306,885</b>   |
| Value Traded (C\$)          | 92,705,371     | 141,610,983,422 | <b>141,703,688,793</b> |
| # of Trades                 | 24,506         | 13,233,866      | <b>13,258,372</b>      |
| <b>ETFs</b>                 |                |                 |                        |
| Number of Issuers           |                | 313             | <b>313</b>             |
| QMV (C\$)                   |                | 79,084,336,848  | <b>79,084,336,848</b>  |
| New Listings                |                | 35              | <b>35</b>              |
| Volume Traded               |                | 3,054,598,776   | <b>3,054,598,776</b>   |
| Value Traded (C\$)          |                | 39,484,493,734  | <b>39,484,493,734</b>  |
| # of Trades                 |                | 3,410,598       | <b>3,410,598</b>       |

|  | TSX Venture   | TSX            | TSXV and TSX          |
|--|---------------|----------------|-----------------------|
| <b>Clean Technology &amp; Renewable Energy</b> |               |                |                       |
| Number of Issuers                              | 76            | 44             | <b>120</b>            |
| QMV (C\$)                                      | 1,153,873,224 | 25,590,499,668 | <b>26,744,372,892</b> |
| New Listings                                   | 4             | 2              | <b>6</b>              |
| Equity Capital Raised (C\$)                    | 75,717,387    | 1,388,709,519  | <b>1,464,426,906</b>  |
| Number of Financings                           | 46            | 18             | <b>64</b>             |
| Volume Traded                                  | 592,329,389   | 943,433,534    | <b>1,535,762,923</b>  |
| Value Traded (C\$)                             | 266,624,883   | 5,412,826,088  | <b>5,679,450,971</b>  |
| # of Trades                                    | 106,770       | 1,671,361      | <b>1,778,131</b>      |
| <b>Life Sciences</b>                           |               |                |                       |
| Number of Issuers                              | 68            | 42             | <b>110</b>            |
| QMV (C\$)                                      | 1,656,321,175 | 61,358,560,554 | <b>63,014,881,729</b> |
| New Listings                                   | 5             | 5              | <b>10</b>             |
| Equity Capital Raised (C\$)                    | 536,536,131   | 276,176,546    | <b>812,712,677</b>    |
| Number of Financings                           | 48            | 21             | <b>69</b>             |
| Volume Traded                                  | 1,404,462,820 | 783,018,367    | <b>2,187,481,187</b>  |
| Value Traded (C\$)                             | 972,906,635   | 10,495,340,229 | <b>11,468,246,864</b> |
| # of Trades                                    | 386,879       | 1,017,959      | <b>1,404,838</b>      |
| <b>Technology</b>                              |               |                |                       |
| Number of Issuers                              | 106           | 60             | <b>166</b>            |
| QMV (C\$)                                      | 2,191,636,827 | 69,919,161,036 | <b>72,110,797,863</b> |
| New Listings                                   | 7             | 3              | <b>10</b>             |
| Equity Capital Raised (C\$)                    | 152,358,378   | 2,530,880,367  | <b>2,683,238,745</b>  |
| Number of Financings                           | 55            | 12             | <b>67</b>             |
| Volume Traded                                  | 1,948,899,862 | 1,662,652,543  | <b>3,611,552,405</b>  |
| Value Traded (C\$)                             | 941,999,454   | 24,832,526,599 | <b>25,774,526,053</b> |
| # of Trades                                    | 347,986       | 4,630,913      | <b>4,978,899</b>      |
| <b>Real Estate</b>                             |               |                |                       |
| Number of Issuers                              | 40            | 71             | <b>111</b>            |
| QMV (C\$)                                      | 826,335,453   | 83,823,039,539 | <b>84,649,374,992</b> |
| New Listings                                   | 6             | 1              | <b>7</b>              |
| Equity Capital Raised (C\$)                    | 148,066,275   | 931,165,063    | <b>1,079,231,338</b>  |
| Number of Financings                           | 19            | 18             | <b>37</b>             |
| Volume Traded                                  | 135,015,564   | 927,769,217    | <b>1,062,784,781</b>  |
| Value Traded (C\$)                             | 252,585,658   | 16,473,244,997 | <b>16,725,830,654</b> |
| # of Trades                                    | 29,834        | 3,281,897      | <b>3,311,731</b>      |