

THE

MiG

REPORT

The MiG Report - January 2022: By The Numbers

New Listings* (YTD January 2022)

39 new listings on TSX (22) and TSXV (17)

17 Companies + 18 ETFs + 4 CPCs

Equity Capital Raised (YTD January 2022)

\$1.3 billion on TSX and TSXV

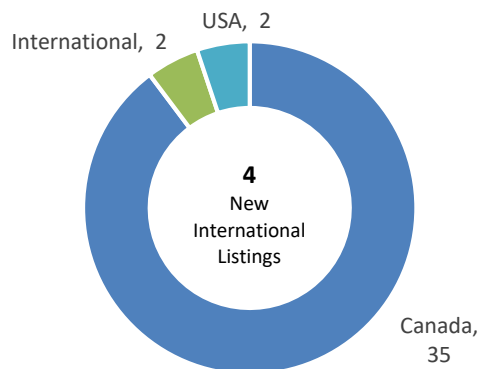
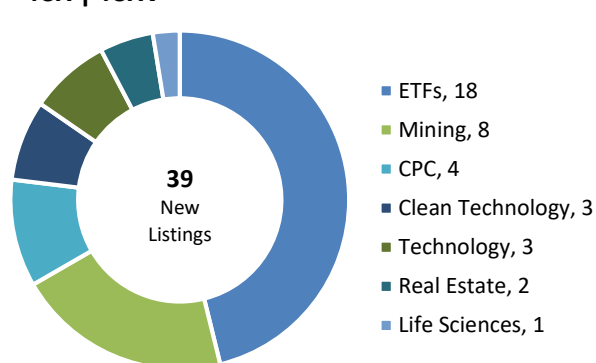
\$13 million - Average financing size on TSX

\$4.6 million - Average financing size on TSXV

New Listings by Sector and Location

YTD January 2022

TSX | TSXV



4 New International Listings:

TSX

Else Nutrition Holdings Inc., Life Sciences, Israel, TSXV Grad

TSXV

Hot Chili Limited, Mining, Australia

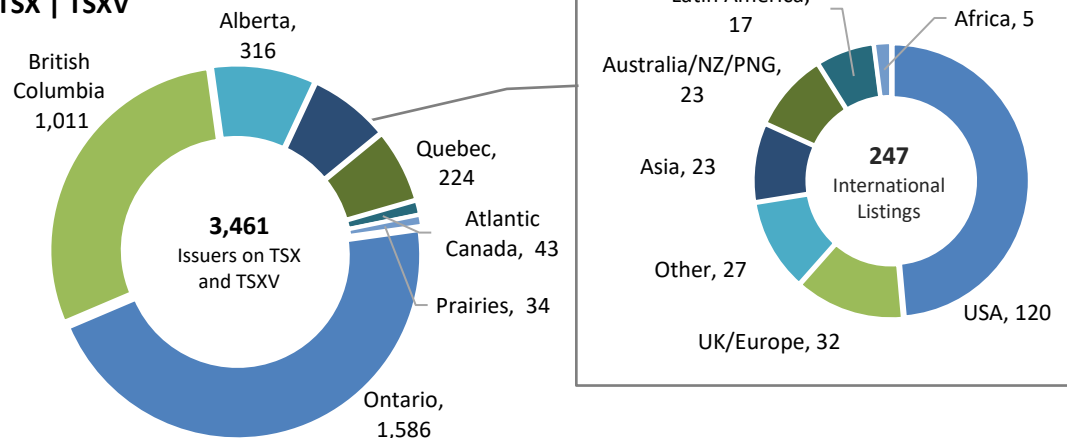
Western Exploration Inc., Mining, Reno, NV

Edge Total Intelligence Inc., Technology, Arlington, VA

Listed Companies by HQ Location

As at January 31, 2022

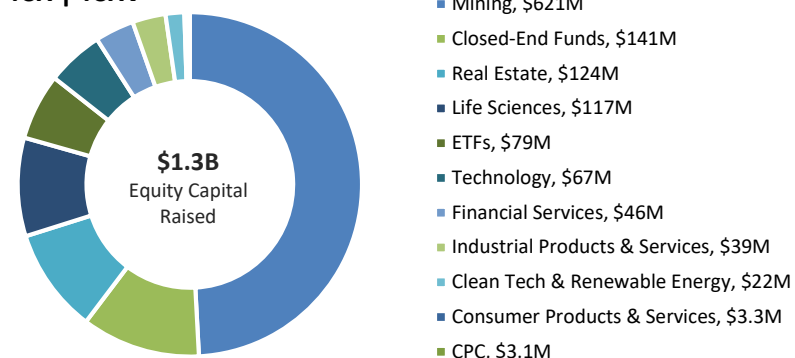
TSX | TSXV



Equity Capital Raised by Sector

YTD January 2022

TSX | TSXV

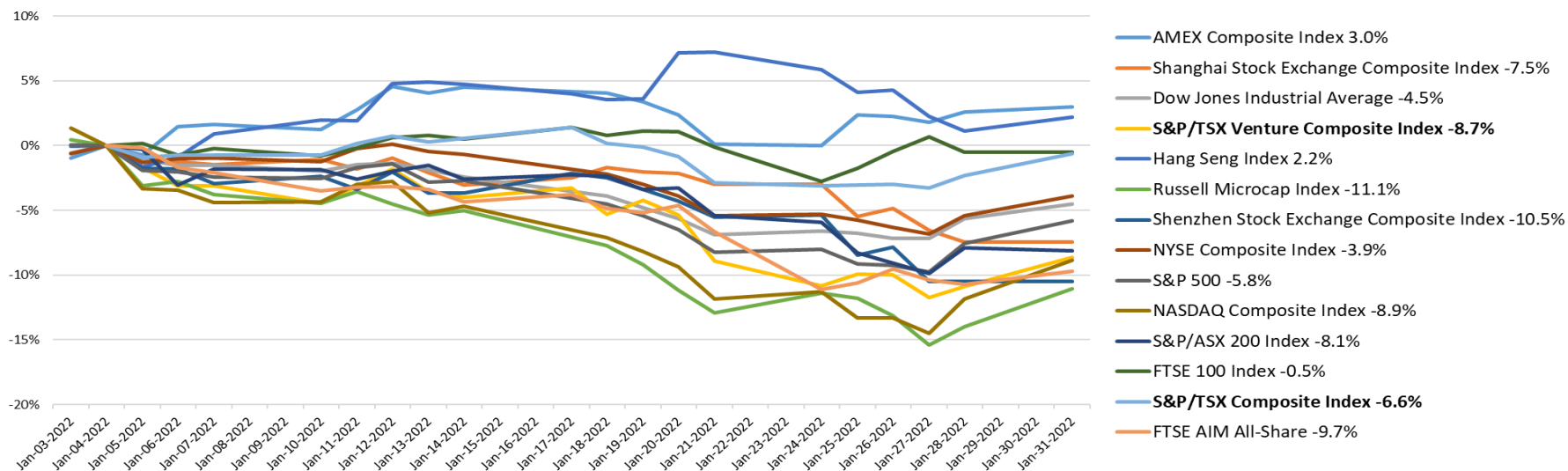


*Includes IPOs, CPC/SPAC IPOs, QTs, QAs, RTOs, Graduates and Other.

What's Going on Generally (YTD/as at January 31, 2022)

| | TSX Venture Exchange | TSXV Last Year | % Change | Toronto Stock Exchange | TSX Last Year | % Change | TSXV and TSX | TSXV and TSX Last Year | % Change |
|---|----------------------|----------------|-------------|------------------------|----------------|-------------|----------------|------------------------|-------------|
| Number of Issuers | 1,697 | 1,640 | 3% | 1,764 | 1,660 | 6% | 3,461 | 3,300 | 5% |
| Market Capitalization (C\$ Billions) | 92.4 | 81.8 | 13% | 4,175.2 | 3,400.2 | 23% | 4,267.6 | 3,482.0 | 23% |
| Going Public Activity/New Listings | 17 | 10 | 70% | 22 | 23 | -4% | 39 | 33 | 18% |
| IPOs (ex CPCs/ETFs/CEFs/SPACs) | 2 | - | 100% | - | 3 | -100% | 2 | 3 | -33% |
| CPC/SPAC IPOs | 4 | 3 | 33% | - | - | 0% | 4 | 3 | 33% |
| ETF & Closed-End Fund IPOs | | | | 18 | 15 | 20% | 18 | 15 | 20% |
| Qualifying Transactions (QTs) | 6 | 3 | 100% | | | | 6 | 3 | 100% |
| Qualifying Acquisitions (QAs) | | | | - | - | 0% | - | - | 0% |
| Reverse-Takeovers (RTOs) | 2 | 2 | 0% | | | | 2 | 2 | 0% |
| TSXV Grads | | | | 2 | 4 | -50% | 2 | 4 | -50% |
| Other | 3 | 2 | 50% | 2 | 1 | 100% | 5 | 3 | 67% |
| Equity Capital Raised (C\$ Millions) | 648.0 | 868.5 | -25% | 616.2 | 2,846.3 | -78% | 1,264.2 | 3,714.9 | -66% |
| Initial Public Offerings | 41.8 | 1.3 | 3242% | 56.3 | 399.6 | -86% | 98.0 | 400.8 | -76% |
| Public Offerings/Supplementary | 38.2 | 279.3 | -86% | 547.9 | 1,318.3 | -58% | 586.1 | 1,597.5 | -63% |
| Private Placements | 568.0 | 588.0 | -3% | 12.0 | 1,128.5 | -99% | 580.0 | 1,716.5 | -66% |
| Number of Financings | 140 | 194 | -28% | 48 | 63 | -24% | 188 | 257 | -27% |
| Volume Traded (Billions of Shares) | 3.5 | 8.5 | -59% | 8.2 | 9.6 | -15% | 11.7 | 18.1 | -35% |
| Value Traded (C\$ Billions) | 2.5 | 5.6 | -55% | 237.0 | 199.5 | 19% | 239.5 | 205.1 | 17% |
| # of Trades (Millions) | 1.5 | 2.8 | -48% | 24.6 | 25.3 | -3% | 26.0 | 28.1 | -7% |
| S&P/TSX/TSXV Composite Indices | 859.1 | 922.1 | -7% | 21,098.3 | 17,337.0 | 22% | | | |

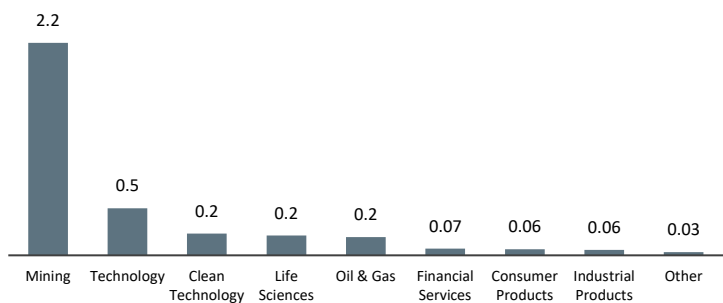
Major Global Index Performance -- YTD January 2022 (Source: S&P Capital IQ)



What's Listed on TSX and TSX Venture Exchange (As at January 31, 2022)

| Sector | TSX Venture Exchange | | | | Toronto Stock Exchange | | | TSXV and TSX | | | | |
|-------------------------------------|----------------------|-------------|--------------------------------|-------------|------------------------|-------------|--------------------------------|----------------|--------------|--------------------------------|------------------|-------------|
| | Listed Issuers | | Total Market Cap (\$ millions) | | Listed Issuers | | Total Market Cap (\$ millions) | Listed Issuers | | Total Market Cap (\$ millions) | | |
| Clean Technology & Renewable Energy | 58 | 3% | 3,190 | 3% | 38 | 2% | 70,640 | 2% | 96 | 3% | 73,831 | 2% |
| Closed-End Funds | | | | | 78 | 4% | 30,831 | 1% | 78 | 2% | 30,831 | 1% |
| Comm. & Media | 10 | 1% | 1,229 | 1% | 20 | 1% | 239,830 | 6% | 30 | 1% | 241,059 | 6% |
| Consumer Products & Services | 45 | 3% | 1,602 | 2% | 75 | 4% | 281,157 | 7% | 120 | 3% | 282,759 | 7% |
| CPC/SPAC | 157 | 9% | 224 | 0.2% | 2 | 0.1% | 345 | 0.01% | 159 | 5% | 568 | 0.01% |
| ETFs | | | | | 892 | 51% | 324,763 | 8% | 892 | 26% | 324,763 | 8% |
| Financial Services | 48 | 3% | 7,976 | 9% | 72 | 4% | 1,147,995 | 27% | 120 | 3% | 1,155,971 | 27% |
| Industrial Products & Services | 38 | 2% | 1,414 | 2% | 117 | 7% | 509,557 | 12% | 155 | 4% | 510,972 | 12% |
| Life Sciences | 97 | 6% | 4,117 | 4% | 63 | 4% | 29,346 | 1% | 160 | 5% | 33,463 | 1% |
| Mining | 969 | 57% | 50,621 | 55% | 200 | 11% | 484,460 | 12% | 1,169 | 34% | 535,081 | 13% |
| Oil & Gas | 79 | 5% | 6,292 | 7% | 57 | 3% | 303,252 | 7% | 136 | 4% | 309,544 | 7% |
| Real Estate | 26 | 2% | 1,445 | 2% | 60 | 3% | 120,723 | 3% | 86 | 2% | 122,168 | 3% |
| Technology | 167 | 10% | 14,110 | 15% | 75 | 4% | 321,394 | 8% | 242 | 7% | 335,503 | 8% |
| Utilities & Pipelines | 3 | 0.2% | 176 | 0.2% | 15 | 1% | 310,861 | 7% | 18 | 1% | 311,037 | 7% |
| TOTAL | 1,697 | 100% | 92,397 | 100% | 1,764 | 100% | 4,175,154 | 100% | 3,461 | 100% | 4,267,551 | 100% |
| Region | | | | | | | | | | | | |
| British Columbia | 861 | 51% | 37,791 | 41% | 150 | 9% | 268,070 | 6% | 1,011 | 29% | 305,862 | 7% |
| Alberta | 166 | 10% | 5,568 | 6% | 150 | 9% | 692,078 | 17% | 316 | 9% | 697,646 | 16% |
| Prairies | 17 | 1% | 871 | 1% | 17 | 1% | 126,711 | 3% | 34 | 1% | 127,582 | 3% |
| Ontario | 380 | 22% | 22,750 | 25% | 1,206 | 68% | 2,223,449 | 53% | 1,586 | 46% | 2,246,199 | 53% |
| Quebec | 96 | 6% | 5,619 | 6% | 128 | 7% | 551,346 | 13% | 224 | 6% | 556,966 | 13% |
| Atlantic Canada | 24 | 1% | 1,009 | 1% | 19 | 1% | 65,781 | 2% | 43 | 1% | 66,790 | 2% |
| International | 153 | 9% | 18,789 | 20% | 94 | 5% | 247,718 | 6% | 247 | 7% | 266,507 | 6% |
| International Breakdown: | | | | | | | | | | | | |
| USA | 74 | 48% | 5,321 | 28% | 46 | 49% | 166,383 | 67% | 120 | 49% | 171,705 | 64% |
| Africa | 3 | 2% | 1,335 | 7% | 2 | 2% | 267 | 0% | 5 | 2% | 1,602 | 1% |
| Asia | 16 | 10% | 408 | 2% | 7 | 7% | 2,210 | 1% | 23 | 9% | 2,617 | 1% |
| Australia/NZ/PNG | 15 | 10% | 1,764 | 9% | 8 | 9% | 28,440 | 11% | 23 | 9% | 30,204 | 11% |
| Latin America | 9 | 6% | 1,864 | 10% | 8 | 9% | 4,387 | 1.8% | 17 | 7% | 6,251 | 2.3% |
| UK/Europe | 20 | 13% | 7,082 | 38% | 12 | 13% | 7,110 | 3% | 32 | 13% | 14,193 | 5% |
| Other | 16 | 10% | 1,015 | 5% | 11 | 12% | 38,921 | 16% | 27 | 11% | 39,935 | 15% |
| TOTAL | 1,697 | 100% | 92,397 | 100% | 1,764 | 100% | 4,175,154 | 100% | 3,461 | 100% | 4,267,551 | 100% |

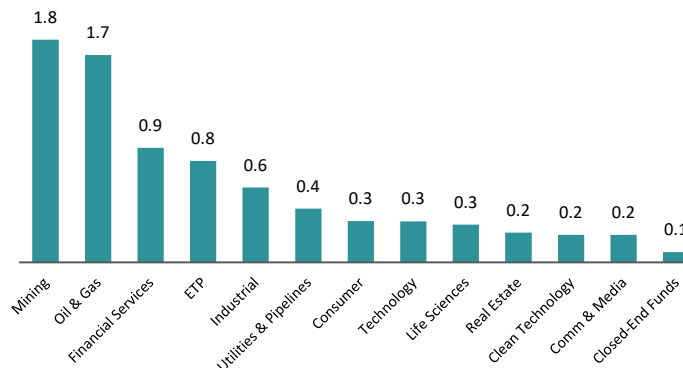
Volume Traded YTD January 2022 on TSXV by Sector (Billions of Shares)



*Other includes Comm. & Media, CPCs, Real Estate and Utilities & Pipelines.

[Click here for our Daily Trading Reports.](#)

Volume Traded YTD January 2022 on TSX by Sector (Billions of Shares)



What's New on TSX and TSX Venture Exchange (YTD January 2022)

| TSXV and TSX | YTD January 2022 | | | | YTD January 2021 | | | |
|--------------------------------|------------------|----------|----------|-----------|------------------|----------|----------|-----------|
| | Canada | US | Int'l | Total | Canada | US | Int'l | Total |
| Clean Tech & Renewable Energy | 3 | - | - | 3 | 1 | - | - | 1 |
| Closed-End Funds | - | - | - | - | 1 | - | - | 1 |
| Comm. & Media | - | - | - | - | - | - | - | - |
| Consumer Products & Services | - | - | - | - | 2 | - | - | 2 |
| CPC/SPAC | 4 | - | - | 4 | 2 | - | 1 | 3 |
| ETFs | 18 | - | - | 18 | 14 | - | - | 14 |
| Financial Services | - | - | - | - | - | - | - | - |
| Industrial Products & Services | - | - | - | - | - | - | - | - |
| Life Sciences | - | - | 1 | 1 | 1 | 2 | - | 3 |
| Mining | 6 | 1 | 1 | 8 | 5 | - | - | 5 |
| Oil & Gas | - | - | - | - | - | - | - | - |
| Real Estate | 2 | - | - | 2 | - | - | - | - |
| Technology | 2 | 1 | - | 3 | 2 | 1 | 1 | 4 |
| Utilities & Pipelines | - | - | - | - | - | - | - | - |
| Total | 35 | 2 | 2 | 39 | 28 | 3 | 2 | 33 |

| TSX Venture Exchange | Going Public Activity | | | | IPOs | | | | QTs | | | | RTOs | | | | Other | | | | | | | |
|--------------------------------|-----------------------|----------|----------|-----------|------------------|----------|----------|-----------|------------------|----------|----------|----------|------------------|----------|----------|----------|------------------|----------|----------|----------|----------|----------|----------|----------|
| | YTD January 2022 | | | | YTD January 2021 | | | | YTD January 2022 | | | | YTD January 2022 | | | | YTD January 2022 | | | | | | | |
| Sector | Canada | US | Int'l | Total | Canada | US | Int'l | Total | Canada | US | Int'l | Total | Canada | US | Int'l | Total | Canada | US | Int'l | Total | | | | |
| Clean Tech & Renewable Energy | 2 | - | - | 2 | - | - | - | - | - | 2 | - | 2 | - | - | - | - | - | - | - | - | | | | |
| Closed-End Funds | - | - | - | - | - | - | - | - | - | - | - | - | - | - | - | - | - | - | - | - | | | | |
| Comm. & Media | - | - | - | - | - | - | - | - | - | - | - | - | - | - | - | - | - | - | - | - | | | | |
| Consumer Products & Services | - | - | - | - | 1 | - | - | 1 | - | - | - | - | - | - | - | - | - | - | - | - | | | | |
| CPC | 4 | - | - | 4 | 2 | - | 1 | 3 | 4 | - | 4 | - | - | - | - | - | - | - | - | - | | | | |
| ETFs | - | - | - | - | - | - | - | - | - | - | - | - | - | - | - | - | - | - | - | - | | | | |
| Financial Services | - | - | - | - | - | - | - | - | - | - | - | - | - | - | - | - | - | - | - | - | | | | |
| Industrial Products & Services | - | - | - | - | - | - | - | - | - | - | - | - | - | - | - | - | - | - | - | - | | | | |
| Life Sciences | - | - | - | - | - | 1 | - | 1 | - | - | - | - | - | - | - | - | - | - | - | - | | | | |
| Mining | 6 | 1 | 1 | 8 | 3 | - | - | 3 | 2 | 2 | - | 2 | - | 1 | 1 | - | 2 | - | 1 | 3 | | | | |
| Oil & Gas | - | - | - | - | - | - | - | - | - | - | - | - | - | - | - | - | - | - | - | - | | | | |
| Real Estate | - | - | - | - | - | - | - | - | - | - | - | - | - | - | - | - | - | - | - | - | | | | |
| Technology | 2 | 1 | - | 3 | - | 1 | 1 | 2 | - | 1 | 1 | 2 | 1 | - | 1 | - | - | - | - | - | | | | |
| Utilities & Pipelines | - | - | - | - | - | - | - | - | - | - | - | - | - | - | - | - | - | - | - | - | | | | |
| Total | 14 | 2 | 1 | 17 | 6 | 2 | 2 | 10 | 6 | - | - | 6 | 5 | 1 | - | 6 | 1 | 1 | - | 2 | 2 | - | 1 | 3 |

| Toronto Stock Exchange | Going Public Activity | | | | IPO | | | | Graduates | | | | QAs | | | | Other | | | | | | |
|--------------------------------|-----------------------|----------|----------|-----------|------------------|----------|----------|-----------|------------------|----------|----------|-----------|------------------|----------|----------|----------|------------------|----------|----------|----------|----------|----------|----------|
| | YTD January 2022 | | | | YTD January 2021 | | | | YTD January 2022 | | | | YTD January 2022 | | | | YTD January 2022 | | | | | | |
| Sector | Canada | US | Int'l | Total | Canada | US | Int'l | Total | Canada | US | Int'l | Total | Canada | US | Int'l | Total | Canada | US | Int'l | Total | | | |
| Clean Tech & Renewable Energy | 1 | - | - | 1 | 1 | - | - | 1 | - | - | - | - | - | - | - | - | 1 | - | - | 1 | | | |
| Closed-End Funds | - | - | - | - | 1 | - | - | 1 | - | - | - | - | - | - | - | - | - | - | - | - | | | |
| Comm. & Media | - | - | - | - | - | - | - | - | - | - | - | - | - | - | - | - | - | - | - | - | | | |
| Consumer Products & Services | - | - | - | - | 1 | - | - | 1 | - | - | - | - | - | - | - | - | - | - | - | - | | | |
| SPAC | - | - | - | - | - | - | - | - | - | - | - | - | - | - | - | - | - | - | - | - | | | |
| ETFs | 18 | - | - | 18 | 14 | - | - | 14 | 18 | - | - | 18 | - | - | - | - | - | - | - | - | | | |
| Financial Services | - | - | - | - | - | - | - | - | - | - | - | - | - | - | - | - | - | - | - | - | | | |
| Industrial Products & Services | - | - | - | - | - | - | - | - | - | - | - | - | - | - | - | - | - | - | - | - | | | |
| Life Sciences | - | - | 1 | 1 | 1 | 1 | - | 2 | - | - | 1 | 1 | - | - | - | - | - | - | - | - | | | |
| Mining | - | - | - | - | 2 | - | - | 2 | - | - | - | - | - | - | - | - | - | - | - | - | | | |
| Oil & Gas | - | - | - | - | - | - | - | - | - | - | - | - | - | - | - | - | - | - | - | - | | | |
| Real Estate | 2 | - | - | 2 | - | - | - | - | - | 1 | - | 1 | - | - | - | - | 1 | - | - | 1 | | | |
| Technology | - | - | - | - | 2 | - | - | 2 | - | - | - | - | - | - | - | - | - | - | - | - | | | |
| Utilities & Pipelines | - | - | - | - | - | - | - | - | - | - | - | - | - | - | - | - | - | - | - | - | | | |
| Total | 21 | - | 1 | 22 | 22 | 1 | - | 23 | 18 | - | - | 18 | 1 | - | 1 | 2 | - | - | - | 2 | - | - | 2 |

What's Financed on TSX and TSX Venture Exchange by Sector (YTD January 2022)

| Sector | TSX Venture Exchange (C\$ Millions) | | | | Toronto Stock Exchange (C\$ Millions) | | | | TSXV and TSX (C\$ Millions) | | | |
|-------------------------------------|-------------------------------------|-------------|--------------|--------------|---------------------------------------|--------------|-------------|--------------|-----------------------------|--------------|--------------|----------------|
| | IPO | PO | PP | Total | IPO | PO* | PP | Total | IPO | PO | PP | Total |
| Clean Technology & Renewable Energy | - | - | 22.2 | 22.2 | - | - | - | - | - | - | 22.2 | 22.2 |
| Closed-End Funds | - | - | - | - | - | 141.0 | - | 141.0 | - | 141.0 | - | 141.0 |
| Comm. & Media | - | - | - | - | - | - | - | - | - | - | - | - |
| Consumer Products & Services | - | - | 3.3 | 3.3 | - | - | - | - | - | - | 3.3 | 3.3 |
| CPC/SPAC | 3.0 | - | 0.2 | 3.1 | - | - | - | - | 3.0 | - | 0.2 | 3.1 |
| ETFs | - | - | - | - | 56.3 | 22.3 | - | 78.6 | 56.3 | 22.3 | - | 78.6 |
| Financial Services | - | - | 2.7 | 2.7 | - | 43.7 | - | 43.7 | - | 43.7 | 2.7 | 46.4 |
| Industrial Products & Services | - | 8.6 | 1.3 | 9.9 | - | 29.6 | - | 29.6 | - | 38.2 | 1.3 | 39.5 |
| Life Sciences | - | - | 1.8 | 1.8 | - | 115.0 | 0.1 | 115.1 | - | 115.0 | 1.9 | 116.9 |
| Mining | 38.8 | 29.6 | 461.9 | 530.3 | - | 79.2 | 11.9 | 91.1 | 38.8 | 108.9 | 473.7 | 621.4 |
| Oil & Gas | - | - | - | - | - | - | - | - | - | - | - | - |
| Real Estate | - | - | 7.2 | 7.2 | - | 117.0 | - | 117.0 | - | 117.0 | 7.2 | 124.2 |
| Technology | - | - | 67.5 | 67.5 | - | - | - | - | - | - | 67.5 | 67.5 |
| Utilities & Pipelines | - | - | - | - | - | - | - | - | - | - | - | - |
| TOTAL | 41.8 | 38.2 | 568.0 | 648.0 | 56.3 | 547.9 | 12.0 | 616.2 | 98.0 | 586.1 | 580.0 | 1,264.2 |

Top 10 Financings in January 2022

TSXV Top 10 Financings

1. Sigma Lithium Corporation, Mining - \$137M Private Placement
2. Rock Tech Lithium Inc., Mining - \$53M Private Placement
3. Neo Lithium Corp., Mining - \$41M Private Placement
4. Hot Chili Limited, Mining - \$34M Initial Public Offering
5. Altus Strategies PLC, Mining - \$33M Private Placement
6. Zentek Ltd., Mining - \$33M Private Placement
7. Pluribus Technologies Corp., Technology - \$23M Private Placement
8. Tribe Property Technologies Inc., Technology - \$21M Private Placement
9. Rhyolite Resources Ltd., Mining - \$18M Private Placement
10. Eddy Smart Home Solutions Ltd., Clean Technology - \$12M Private Placement

TSX Top 10 Financings

1. Crombie Real Estate Investment Trust, Real Estate - \$117M Public Offering
2. dentalcorp Holdings Ltd., Life Sciences - \$115M Public Offering
3. North American Financial 15 Split Corp., Closed-End Funds - \$88M Public Offering
4. Firm Capital Mortgage Investment Corporation, Financial Services - \$44M Public Offering
5. Nomad Royalty Company Ltd., Mining - \$43M Public Offering
6. Brompton Lifeco Split Corp., Closed-End Funds - \$41M Public Offering
7. Spark Power Group Inc., Industrial Products & Services - \$30M Public Offering
8. Talon Metals Corp., Mining - \$28M Public Offering
9. Guardian Canadian Bond ETF, ETP - \$16M Public Offering
10. Global Dividend Growth Split Corp., Closed-End Funds - \$13M Public Offering

*Includes supplementary & secondary offerings

What's Happening by Sector (YTD January 2022)

| | TSXV | TSX | TSXV and TSX |
|--|----------------|-----------------|------------------------|
| Clean Technology & Renewable Energy | | | |
| Number of Issuers | 58 | 38 | 96 |
| Market Capitalization (C\$) | 3,190,422,023 | 70,640,362,103 | 73,830,784,127 |
| New Listings | 2 | 1 | 3 |
| Equity Capital Raised (C\$) | 22,220,935 | - | 22,220,935 |
| Number of Financings | 2 | - | 2 |
| Volume Traded | 223,320,046 | 227,529,953 | 450,849,999 |
| Value Traded (C\$) | 120,167,514 | 3,432,590,477 | 3,552,757,990 |
| # of Trades | 82,051 | 941,238 | 1,023,289 |
| Life Sciences | | | |
| Number of Issuers | 97 | 63 | 160 |
| Market Capitalization (C\$) | 4,117,017,076 | 29,346,130,820 | 33,463,147,895 |
| New Listings | - | 1 | 1 |
| Equity Capital Raised (C\$) | 1,812,541 | 115,126,375 | 116,938,916 |
| Number of Financings | 3 | 2 | 5 |
| Volume Traded | 203,477,256 | 311,879,686 | 515,356,942 |
| Value Traded (C\$) | 87,566,266 | 1,400,738,008 | 1,488,304,273 |
| # of Trades | 66,251 | 652,108 | 718,359 |
| Technology | | | |
| Number of Issuers | 167 | 75 | 242 |
| Market Capitalization (C\$) | 14,109,516,961 | 321,393,601,720 | 335,503,118,681 |
| New Listings | 3 | - | 3 |
| Equity Capital Raised (C\$) | 67,482,801 | - | 67,482,801 |
| Number of Financings | 9 | - | 9 |
| Volume Traded | 485,091,055 | 339,946,463 | 825,037,518 |
| Value Traded (C\$) | 563,270,385 | 16,133,801,257 | 16,697,071,642 |
| # of Trades | 366,863 | 1,636,970 | 2,003,833 |

| | TSXV | TSX |
|--|-------------|-----------------|
| Capital Pool Companies (CPCs) | | |
| Number of Issuers | 157 | |
| Market Capitalization (C\$) | 223,629,506 | |
| New Listings | 4 | |
| Special Purpose Acquisition Companies (SPACs) | | |
| Number of Issuers | | 2 |
| Market Capitalization (C\$) | | 344,701,370 |
| New Listings | | - |
| Exchange-Traded Products (ETFs) | | |
| Number of Issuers | | 892 |
| Market Capitalization (C\$) | | 324,763,146,434 |
| New Listings | | 18 |
| Closed-End Funds (CEFs) | | |
| Number of Issuers | | 78 |
| Market Capitalization (C\$) | | 30,830,644,872 |
| New Listings | | - |

| | TSXV | TSX | TSXV and TSX |
|----------------------------------|----------------|-----------------|------------------------|
| Mining | | | |
| Number of Issuers | 969 | 200 | 1,169 |
| Market Capitalization (C\$) | 50,621,135,589 | 484,459,630,650 | 535,080,766,238 |
| New Listings | 8 | - | 8 |
| Equity Capital Raised (C\$) | 530,261,092 | 91,133,364 | 621,394,456 |
| Number of Financings | 113 | 7 | 120 |
| Volume Traded | 2,188,013,294 | 1,843,838,897 | 4,031,852,191 |
| Value Traded (C\$) | 1,487,737,113 | 20,993,221,176 | 22,480,958,289 |
| # of Trades | 792,644 | 4,677,572 | 5,470,216 |
| Oil and Gas | | | |
| Number of Issuers | 79 | 57 | 136 |
| Market Capitalization (C\$) | 6,292,129,455 | 303,252,328,962 | 309,544,458,417 |
| New Listings | - | - | - |
| Equity Capital Raised (C\$) | - | - | - |
| Number of Financings | - | - | - |
| Volume Traded | 188,720,135 | 1,715,555,914 | 1,904,276,049 |
| Value Traded (C\$) | 132,945,616 | 27,611,279,308 | 27,744,224,924 |
| # of Trades | 76,290 | 4,093,064 | 4,169,354 |
| Energy Services* | | | |
| Number of Issuers | 14 | 34 | 48 |
| Market Capitalization (C\$) | 792,639,002 | 24,557,197,102 | 25,349,836,104 |
| New Listings | - | - | - |
| Equity Capital Raised (C\$) | - | - | - |
| Number of Financings | - | - | - |
| Volume Traded | 15,080,393 | 153,367,021 | 168,447,414 |
| Value Traded (C\$) | 6,341,097 | 1,332,733,280 | 1,339,074,377 |
| # of Trades | 3,476 | 430,992 | 434,468 |
| Utilities & Pipelines | | | |
| Number of Issuers | 3 | 15 | 18 |
| Market Capitalization (C\$) | 176,079,405 | 310,861,403,707 | 311,037,483,112 |
| New Listings | - | - | - |
| Equity Capital Raised (C\$) | - | - | - |
| Number of Financings | - | - | - |
| Volume Traded | 1,135,958 | 445,158,183 | 446,294,141 |
| Value Traded (C\$) | 2,050,809 | 21,290,854,597 | 21,292,905,406 |
| # of Trades | 1,351 | 1,434,243 | 1,435,594 |

*Energy Services is a subsector, composed of issuers from other sectors.

What's Happening by Sector (YTD January 2022)

Diversified Industries Sectors

| | TSXV | TSX | TSXV and TSX |
|---|---------------|-------------------|--------------------------|
| Consumer Products & Services | | | |
| Number of Issuers | 45 | 75 | 120 |
| Market Capitalization (C\$) | 1,601,980,208 | 281,156,540,163 | 282,758,520,371 |
| New Listings | - | - | - |
| Equity Capital Raised (C\$) | 3,270,971 | - | 3,270,971 |
| Number of Financings | 1 | - | 1 |
| Volume Traded | 62,194,245 | 340,949,263 | 403,143,508 |
| Value Traded (C\$) | 33,040,728 | 11,094,682,230 | 11,127,722,958 |
| # of Trades | 26,398 | 1,473,459 | 1,499,857 |
| Communications & Media | | | |
| Number of Issuers | 10 | 20 | 30 |
| Market Capitalization (C\$) | 1,229,085,459 | 239,829,958,712 | 241,059,044,171 |
| New Listings | - | - | - |
| Equity Capital Raised (C\$) | - | - | - |
| Number of Financings | - | - | - |
| Volume Traded | 15,845,115 | 226,504,183 | 242,349,298 |
| Value Traded (C\$) | 11,527,004 | 9,729,119,740 | 9,740,646,744 |
| # of Trades | 5,888 | 755,380 | 761,268 |
| Financial Services | | | |
| Number of Issuers | 48 | 72 | 120 |
| Market Capitalization (C\$) | 7,976,251,707 | 1,147,994,957,391 | 1,155,971,209,098 |
| New Listings | - | - | - |
| Equity Capital Raised (C\$) | 2,700,001 | 43,700,000 | 46,400,001 |
| Number of Financings | 3 | 1 | 4 |
| Volume Traded | 68,298,788 | 948,920,729 | 1,017,219,517 |
| Value Traded (C\$) | 25,432,699 | 76,922,984,315 | 76,948,417,014 |
| # of Trades | 11,154 | 3,311,002 | 3,322,156 |

| | TSXV | TSX | TSXV and TSX |
|---|---------------|-----------------|------------------------|
| Industrial Products & Services | | | |
| Number of Issuers | 38 | 117 | 155 |
| Market Capitalization (C\$) | 1,414,488,640 | 509,557,348,586 | 510,971,837,226 |
| New Listings | - | - | - |
| Equity Capital Raised (C\$) | 9,880,143 | 29,608,960 | 39,489,103 |
| Number of Financings | 2 | 1 | 3 |
| Volume Traded | 57,208,999 | 618,826,513 | 676,035,512 |
| Value Traded (C\$) | 23,318,117 | 21,026,880,077 | 21,050,198,194 |
| # of Trades | 18,805 | 2,364,587 | 2,383,392 |
| Real Estate | | | |
| Number of Issuers | 26 | 60 | 86 |
| Market Capitalization (C\$) | 1,445,020,309 | 120,723,277,885 | 122,168,298,194 |
| New Listings | - | 2 | 2 |
| Equity Capital Raised (C\$) | 7,238,000 | 117,002,250 | 124,240,250 |
| Number of Financings | 2 | 1 | 3 |
| Volume Traded | 11,148,277 | 245,204,825 | 256,353,102 |
| Value Traded (C\$) | 31,843,763 | 5,271,992,145 | 5,303,835,908 |
| # of Trades | 13,837 | 1,063,575 | 1,077,412 |

LISTINGS STATISTICS

 @tsx_tsxv

tsx.com/mig

For more information:

mig@tmx.com

CHERYL MASCARENHAS

Manager, Market Intelligence

E cheryl.mascarenhas@tmx.com

MARVIE QUINTANA

Analyst, Market Intelligence

E marvie.quintana@tmx.com

RECEIVE THE MONTHLY MiG
REPORT IN YOUR INBOX

SUBSCRIBE



The document and the information contained therein are provided "as is" for information purposes only and are not intended to provide investment, financial or other advice, and should not be relied on for any trading, business, financial or other purposes. The information provided is not an invitation to purchase securities listed on Toronto Stock Exchange and/or TSX Venture Exchange. TMX Group Limited and its affiliated companies (collectively, "TMX") do not endorse or recommend any securities referenced in this document. Neither TMX Group Limited, nor any of its affiliated companies or entities, guarantees the completeness of the information contained in this document and we are not responsible for any errors or omissions in, or your use of, or reliance on, the information.

© 2022 TSX Inc. All rights reserved. Do not sell, reproduce or modify this document without TSX Inc.'s prior written consent. The Future is Yours to See., TMX, the TMX design, TMX Group, Toronto Stock Exchange, TSX, TSX Venture Exchange, TSXV and Voir le futur. Réaliser l'avenir. are trademarks of TSX Inc.