



April 24, 2017

For more information, email [trading\\_sales@tsx.com](mailto:trading_sales@tsx.com)  
 Visit our blog at <http://exchange.tmx.com/>

Indices	April 24 Close	Previous Close	Change	% Change
S&P/TSX Composite Index	15,712.46			%
S&P/TSX 60 Index	928.30			%
S&P/TSX Venture Composite	818.06			%
S&P/TSX Completion Index	984.18			%
S&P/TSX Smallcap Index	655.36			%

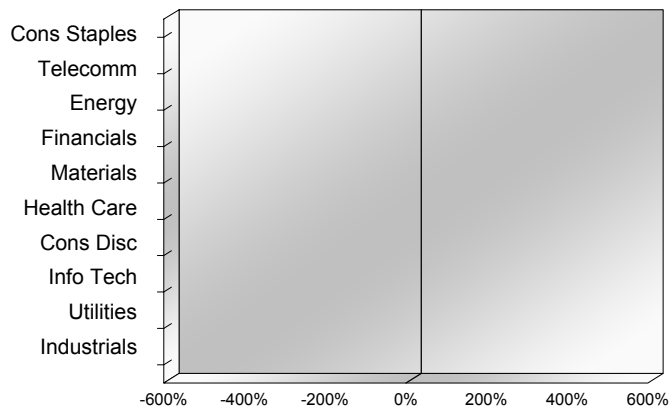
S&P/TSX Composite Index		
Advancers	Decliners	Unchanged
0	0	0

S&P/TSX Composite Index			
Top 10 Index Contributors		Top 10 Index Detractors	
Constituent	Index Contribution	Constituent	Index Contribution

S&P/TSX Composite Index			
Top 10 Advancers		Top 10 Decliners	
Constituent	Return	Constituent	Return
	%		%

S&P/TSX Composite Index				
Sector	# of Index Constituents	Weight	Market Cap (\$B)	Index Contribution
Consumer Staples	11	%	\$79.82	
Telecommunication Services	3	%	\$103.89	
Energy	51	%	\$451.60	
Financials	27	%	\$722.85	
Materials	56	%	\$254.52	
Health Care	6	%	\$11.29	
Consumer Discretionary	22	%	\$109.92	
Information Technology	12	%	\$60.98	
Utilities	15	%	\$63.81	
Industrials	26	%	\$193.50	
<b>S&amp;P/TSX Composite Index</b>	<b>229</b>	<b>%</b>	<b>\$2,052.18</b>	

S&P/TSX Composite Index - Sectors Returns



This report is published by TSX Inc. TSX Inc. does not guarantee either the completeness or the accuracy of this information. The information contained in this report is provided for informational purposes only and you agree not to rely upon the information contained in this report for any trading, business or financial purpose. These sheets are printed in Canada and issued by TSX Inc. under the express condition, to which everyone receiving or making use thereof assents, that no liability shall be incurred by TSX Inc. or its affiliated companies or any other vendor or donor, including, without limitation, for reliance on or for any errors or inaccuracies in this report. Neither TMX Group Limited, TSX Inc., nor any of their affiliated companies, guarantees the completeness of the information contained in this document and are not responsible for any errors or omission in or your use of, or reliance on, the information. This publication is under copyright. © 2015 TSX Inc. All rights reserved. Do not copy, distribute, sell or modify this publication without the prior written consent of TSX Inc. [www.tmx.com/trading](http://www.tmx.com/trading)

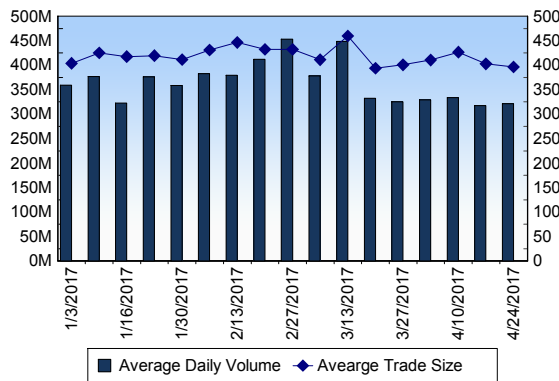
## TSX

Daily Volume	321,482,095
Daily Value	\$6,781,116,790
Daily Trades	810,684
Daily Symbols Traded	1,876

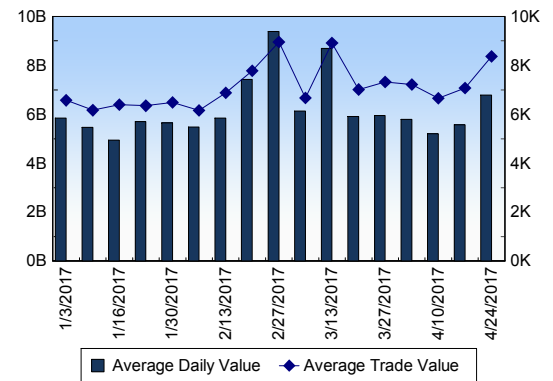
## TSX ANONYMOUS TRADING

Daily Volume	121,806,477
Daily Value	\$2,589,241,769
Average Trade Size	316
% TSX Volume	37.89 %

### TSX Volume



### TSX Value ( in Canadian Dollars )



### Top 20 TSX Symbols by Volume

Symbol	TSX Volume	TSX Value
TD	9,610,325	\$640,429,719
SMF	9,114,427	\$29,929,123
XIU	8,392,412	\$196,457,762
RY	6,971,095	\$669,497,825
YRI	5,246,001	\$21,065,693
BTO	5,239,747	\$18,885,112
CRH	4,697,926	\$40,665,879
TV	4,697,890	\$5,632,636
K	4,673,630	\$23,915,092
MFC	4,381,027	\$104,330,025
TPL	4,255,050	\$86,153
BNS	3,135,438	\$244,692,374
BTE	3,051,679	\$12,421,028
ECA	2,942,050	\$43,203,046
ENB	2,921,634	\$167,006,352
UWE	2,914,964	\$87,479
ABX	2,774,469	\$71,347,266
PD	2,686,512	\$15,227,666
POT	2,659,834	\$58,888,832
BBD.B	2,589,389	\$5,837,171

### Top 20 TSX Symbols by Value

Symbol	TSX Volume	TSX Value
RY	6,971,095	\$669,497,825
TD	9,610,325	\$640,429,719
BMO	2,571,322	\$257,112,892
BNS	3,135,438	\$244,692,374
XIU	8,392,412	\$196,457,762
ENB	2,921,634	\$167,006,352
CM	1,371,960	\$155,318,393
CNR	1,328,120	\$135,834,155
NA	2,026,706	\$111,509,349
MFC	4,381,027	\$104,330,025
SLF	1,847,935	\$90,506,652
SU	2,106,513	\$86,994,016
TRP	1,278,737	\$81,421,265
CP	371,692	\$77,433,140
ABX	2,774,469	\$71,347,266
BCE	1,061,712	\$65,236,623
CNQ	1,410,632	\$62,573,477
POT	2,659,834	\$58,888,832
FNV	558,832	\$51,311,091
BAM.A	996,101	\$49,392,517

### ETF Trading

Daily Volume	30,708,154	Average Trade Value	\$15,016
Daily Value	\$540,683,693	Average Trade Size	853
# Trades	36,007	# of ETFs Traded	467

### Top 10 ETFs by TSX Volume

Symbol	Market Volume	Market Value
XIU	8,392,412	\$196,457,762
HOU	2,427,229	\$16,023,285
HVU	2,284,934	\$16,450,101
HGD	1,778,054	\$14,223,459
HNU	1,253,614	\$9,720,622
HND	1,054,334	\$11,827,287
HGU	936,585	\$16,345,713
HOD	866,475	\$9,798,773
XEG	835,639	\$10,483,944
XIC	631,969	\$15,771,023

### Top 10 ETFs by TSX Value

Symbol	Market Volume	Market Value
XIU	8,392,412	\$196,457,762
HVU	2,284,934	\$16,450,101
HGU	936,585	\$16,345,713
HOU	2,427,229	\$16,023,285
XIC	631,969	\$15,771,023
HXU	431,776	\$14,656,120
HGD	1,778,054	\$14,223,459
HND	1,054,334	\$11,827,287
XEG	835,639	\$10,483,944
ZUB	406,320	\$10,433,128

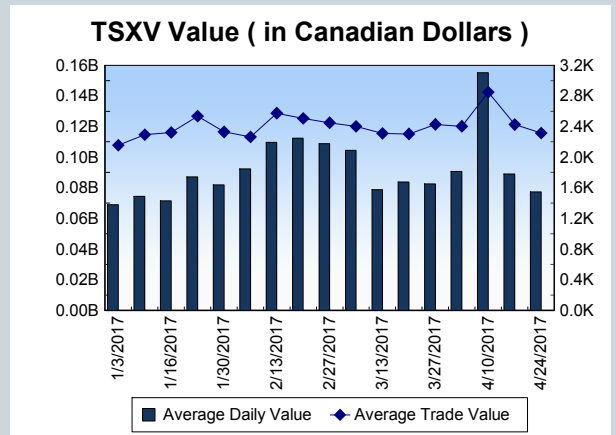
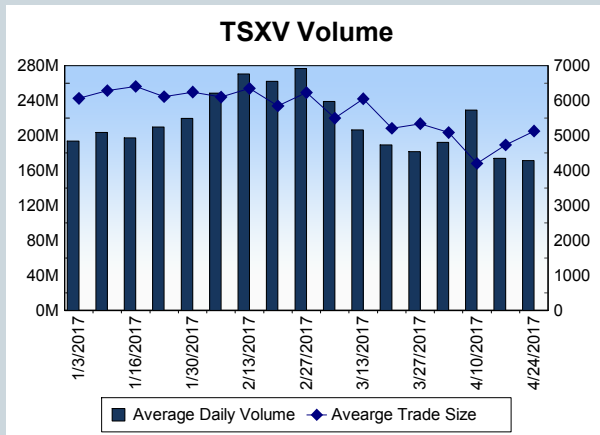
<b>Block Trades</b>	<b>Non Block Trades</b>
1,158	809,526

Top 5 Block Trade Brokers by Volume	
Broker	TSX Block Volume
TD SECURITIES INC.	17,977,600
CIBC WORLD MARKETS INC.	9,649,100
SCOTIA CAPITAL INC.	9,270,300
PAVILION GLOBAL MARKETS	6,599,900
RBC CAPITAL MARKETS	6,139,700

Top 5 Block Trade Symbols by Volume	
Symbol	TSX Block Volume
TD	5,954,200
RY	4,364,800
XIU	3,716,700
TV	2,632,300
BNS	1,439,600

TSXV	
Daily Volume	171,330,117
Daily Value	\$77,308,484
Daily Trades	33,407
Daily Symbols Traded	1,202

TSXV ANONYMOUS TRADING	
Daily Volume	63,303,176
Daily Value	\$29,389,670
Average Trade Size	4,806
% TSXV Volume	36.95%



Top 20 TSXV Symbols by Volume		
Symbol	TSXV Volume	TSXV Value
QBA	4,797,992	\$182,738
EKG	4,688,900	\$326,083
QNC	3,751,062	\$468,850
CAP	3,680,208	\$102,462
CN	3,411,898	\$412,513
ATW	3,173,913	\$519,341
PYR	3,173,004	\$2,078,635
NWE	2,743,808	\$124,713
TLT	2,707,477	\$1,266,938
PTV	2,553,809	\$131,879
ACB	2,213,218	\$6,168,585
RTI	2,172,832	\$1,180,835
FF	1,881,793	\$1,217,340
TWM	1,678,488	\$2,218,261
PHM	1,665,575	\$419,268
AGB	1,643,565	\$2,356,620
SJL	1,588,668	\$95,322
DYA	1,410,392	\$1,267,887
PPX	1,310,461	\$85,192
NYX	1,267,741	\$1,609,315

Top 20 TSXV Symbols by Value		
Symbol	TSXV Volume	TSXV Value
ACB	2,213,218	\$6,168,585
AGB	1,643,565	\$2,356,620
TWM	1,678,488	\$2,218,261
NXO	1,051,393	\$2,130,772
PYR	3,173,004	\$2,078,635
WED	657,422	\$2,040,594
EMC	604,757	\$1,701,419
NYX	1,267,741	\$1,609,315
LIX	767,880	\$1,442,189
COR	937,304	\$1,430,304
DYA	1,410,392	\$1,267,887
TLT	2,707,477	\$1,266,938
OGI	433,358	\$1,227,950
IMH	616,128	\$1,225,107
FF	1,881,793	\$1,217,340
FPC	913,115	\$1,196,245
RTI	2,172,832	\$1,180,835
PRV.UN	466,699	\$1,075,285
BUS	360,828	\$1,046,358
STM	1,166,996	\$990,785

Dark TSX/TSXV Trading			
Volume	10,995,380	Daily Trades	37,500
Value	258,633,401	Daily Symbols Traded	1,191