

# DAILY REPORT



For more information, email [trading\\_sales@tsx.com](mailto:trading_sales@tsx.com)

June 19, 2023

Indices	June 19 Close	Previous Close	Change	% Change
S&P/TSX Composite Index	19,934.21	19,975.37		-0.21 %
S&P/TSX 60 Index	1,199.39	1,202.18		-0.23 %
S&P/TSX Venture Composite	612.30	613.82		-0.25 %
S&P/TSX Completion Index	1,181.54	1,182.67		-0.10 %
S&P/TSX Smallcap Index	680.14	680.03		0.02 %

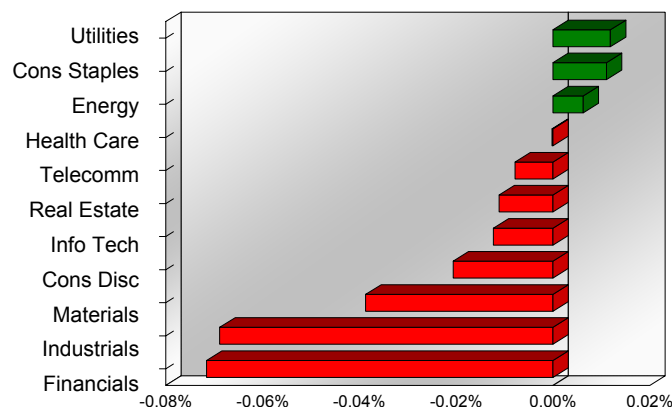
S&P/TSX Composite Index		
Advancers	Decliners	Unchanged
93	131	5

S&P/TSX Composite Index			
Top 10 Index Contributors		Top 10 Index Detractors	
Constituent	Index Contribution	Constituent	Index Contribution
BNS	2.53	BN	-6.68
ATD	2.18	CP	-5.69
TD	2.05	RY	-5.04
ENB	1.85	ABX	-3.76
BIP.UN	1.43	AEM	-2.84
BEP.UN	1.38	CNR	-2.74
TECK.B	1.18	QSR	-2.39
CCO	1.16	WSP	-2.18
FFH	1.06	NA	-2.18
ATS	1.01	CSU	-1.64

S&P/TSX Composite Index			
Top 10 Advancers		Top 10 Decliners	
Constituent	Return	Constituent	Return
ATS	2.92%	FVI	-3.17%
BEP.UN	2.43%	IMG	-3.08%
MAG	1.94%	BBU.UN	-2.64%
TLRY	1.90%	IPCO	-2.16%
FTT	1.84%	CCA	-1.97%
CLS	1.81%	GRT.UN	-1.94%
SIL	1.74%	BLDP	-1.82%
GSY	1.61%	DFY	-1.77%
HBM	1.61%	TCN	-1.72%
LAC	1.59%	ELD	-1.71%

S&P/TSX Composite Index				
Sector	# of Index Constituents	Weight	Market Cap (\$B)	Index Contribution
Utilities	16	4.49 %	\$128.07	2.37
Consumer Staples	11	4.10 %	\$117.08	2.20
Energy	40	16.78 %	\$478.76	1.25
Health Care	5	0.33 %	\$9.28	-0.04
Communication Services	5	4.20 %	\$119.73	-1.57
Real Estate	21	2.39 %	\$68.28	-2.23
Information Technology	11	7.85 %	\$224.02	-2.47
Consumer Discretionary	15	3.87 %	\$110.35	-4.12
Materials	50	11.88 %	\$339.10	-7.73
Industrials	26	13.41 %	\$382.73	-13.75
Financials	29	30.70 %	\$875.90	-14.30
<b>S&amp;P/TSX Composite Index</b>	<b>229</b>	<b>100.00 %</b>	<b>\$2,853.28</b>	<b>-40.38</b>

S&P/TSX Composite Index - Sectors Returns



This report is published by TSX Inc. TSX Inc. does not guarantee either the completeness or the accuracy of this information. The information contained in this report is provided for informational purposes only and you agree not to rely upon the information contained in this report for any trading, business or financial purpose. These sheets are printed in Canada and issued by TSX Inc. under the express condition, to which everyone receiving or making use thereof assents, that no liability shall be incurred by TSX Inc. or its affiliated companies or any other vendor or donor, including, without limitation, for reliance on or for any errors or inaccuracies in this report. Neither TMX Group Limited, TSX Inc., nor any of their affiliated companies, guarantees the completeness of the information contained in this document and are not responsible for any errors or omission in or your use of, or reliance on, the information. This publication is under copyright. © 2016 TSX Inc. All rights reserved. Do not copy, distribute, sell or modify this publication without the prior written consent of TSX Inc. <http://www.tsx.com/trading>

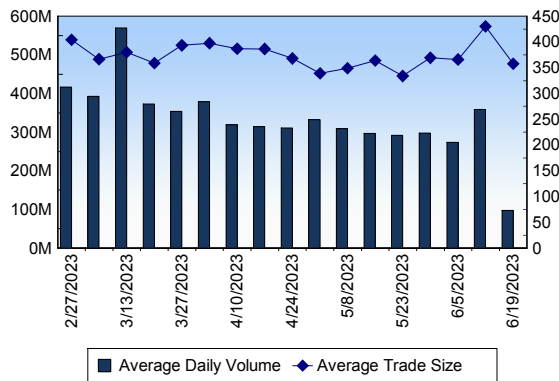
## TSX

Daily Volume	97,882,959
Daily Value	\$2,445,869,507
Daily Trades	273,671
Daily Symbols Traded	1,826

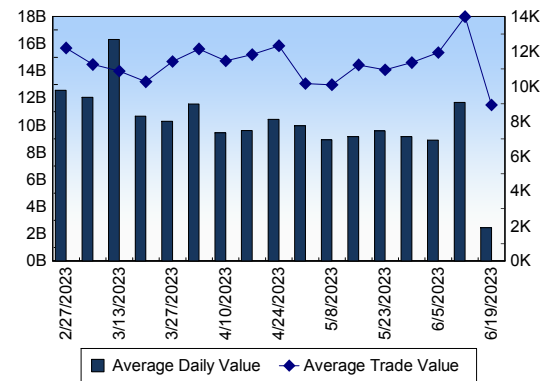
## TSX ANONYMOUS TRADING

Daily Volume	38,579,443
Daily Value	\$1,062,236,726
Average Trade Size	322
% TSX Volume	39.41 %

### TSX Volume



### TSX Value ( in Canadian Dollars )



### Top 20 TSX Symbols by Volume

Symbol	TSX Volume	TSX Value
MFC	3,125,470	\$78,384,520
HUT	2,960,539	\$9,799,777
AVL	2,019,369	\$318,430
DN	1,926,648	\$118,496
BITF	1,837,783	\$3,021,590
CNQ	1,750,512	\$126,980,023
NA	1,651,585	\$163,456,254
TD	1,597,679	\$129,192,151
SU	1,507,904	\$59,814,015
BTE	1,344,874	\$5,815,690
NCU	1,211,710	\$245,938
QSR	1,058,953	\$105,676,436
POW	1,015,549	\$35,680,161
DSV	981,384	\$817,325
TRP	912,384	\$48,755,472
GLXY	869,776	\$3,862,763
XAM	869,120	\$66,542
ENB	797,702	\$39,492,979
ATH	781,772	\$2,195,373
CPG	759,369	\$6,717,532

### Top 20 TSX Symbols by Value

Symbol	TSX Volume	TSX Value
NA	1,651,585	\$163,456,254
TD	1,597,679	\$129,192,151
CNQ	1,750,512	\$126,980,023
QSR	1,058,953	\$105,676,436
MFC	3,125,470	\$78,384,520
SU	1,507,904	\$59,814,015
BMO	454,904	\$54,076,755
RY	424,995	\$53,324,084
TRP	912,384	\$48,755,472
CNR	307,072	\$48,072,946
ENB	797,702	\$39,492,979
BCE	641,093	\$38,557,907
BNS	543,310	\$36,099,262
POW	1,015,549	\$35,680,161
CM	496,094	\$28,949,118
TIH	267,162	\$28,765,235
GWO	749,335	\$28,644,641
CP	237,606	\$24,382,144
SHOP	269,531	\$23,067,817
CCA	342,324	\$22,945,226

### ETF Trading

Daily Volume	8,180,871	Average Trade Value	\$8,543
Daily Value	\$187,313,462	Average Trade Size	373
# Trades	21,925	# of ETFs Traded	706

### Top 10 ETFs by TSX Volume

Symbol	Market Volume	Market Value
HNU	619,539	\$10,069,453
XIU	611,949	\$18,557,970
DLR.U	364,532	\$3,740,017
HOU	291,729	\$3,297,496
HOD	262,168	\$2,961,874
HND	250,288	\$13,730,691
DLR	239,802	\$3,247,193
BTCC.B	164,237	\$836,438
PSA	161,116	\$8,078,261
XEQT	138,730	\$3,641,889

### Top 10 ETFs by TSX Value

Symbol	Market Volume	Market Value
XIU	611,949	\$18,557,970
HND	250,288	\$13,730,691
HNU	619,539	\$10,069,453
PSA	161,116	\$8,078,261
VFV	56,901	\$5,898,455
DLR.U	364,532	\$3,740,017
XEQT	138,730	\$3,641,889
HOU	291,729	\$3,297,496
DLR	239,802	\$3,247,193
VEQT	90,498	\$3,162,121

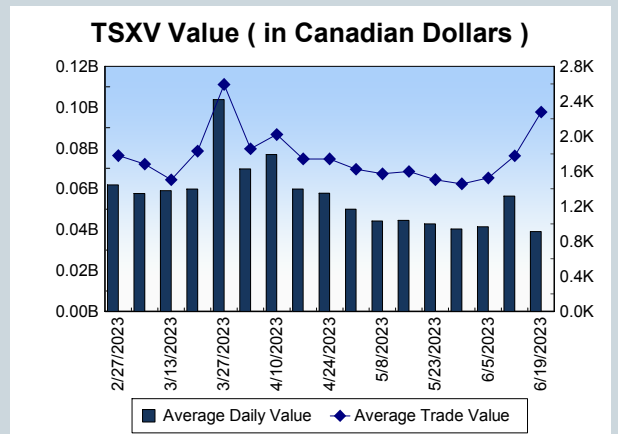
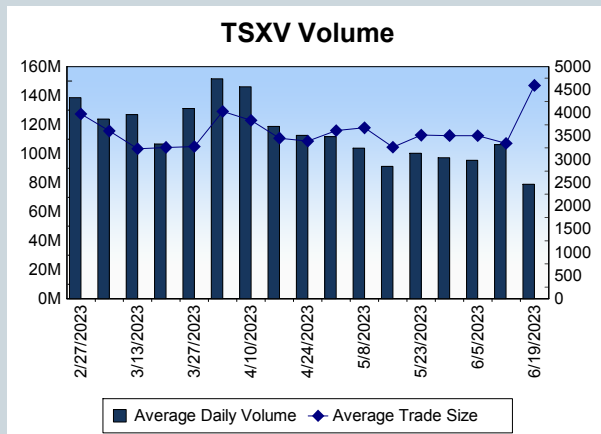
<b>Block Trades</b>	<b>Non Block Trades</b>
211	273,460

Top 5 Block Trade Brokers by Volume	
Broker	TSX Block Volume
SCOTIA CAPITAL INC.	7,869,700
BMO NESBITT BURNS INC.	5,298,800
QUESTRADE INC.	3,528,300
RBC CAPITAL MARKETS	2,828,400
INSTINET CANADA LTD.	2,240,700

Top 5 Block Trade Symbols by Volume	
Symbol	TSX Block Volume
MFC	1,738,300
CNQ	1,305,300
NA	1,230,000
QSR	936,800
SU	912,000

TSXV	
Daily Volume	78,904,045
Daily Value	\$39,086,901
Daily Trades	17,169
Daily Symbols Traded	1,006

TSXV ANONYMOUS TRADING	
Daily Volume	39,049,992
Daily Value	\$14,840,743
Average Trade Size	4,681
% TSXV Volume	49.49%



Top 20 TSXV Symbols by Volume		
Symbol	TSXV Volume	TSXV Value
KIP	4,857,228	\$1,669,866
WED	3,390,609	\$12,206,489
FUU	2,455,231	\$894,483
SNV.H	1,683,414	\$125,727
NUG	1,304,000	\$32,600
CMC	1,173,625	\$54,588
ABRA	1,163,841	\$318,208
DSM	1,105,684	\$72,921
JOR	1,069,200	\$74,847
NDVA	1,005,000	\$28,548
MUR	870,647	\$52,674
SOMA	868,740	\$398,697
ROCK	762,000	\$29,225
WHE	743,250	\$44,595
CYBE	732,945	\$270,272
NILI	660,693	\$320,505
PWM	657,210	\$185,711
KTN	643,897	\$45,071
TAO	635,023	\$446,189
LIO	628,374	\$420,623

Top 20 TSXV Symbols by Value		
Symbol	TSXV Volume	TSXV Value
WED	3,390,609	\$12,206,489
KIP	4,857,228	\$1,669,866
PMET	91,846	\$1,568,509
HIVE	246,329	\$1,095,999
TOI	10,656	\$1,042,978
FUU	2,455,231	\$894,483
SLI	117,960	\$699,726
CRE	338,786	\$650,123
ABR	188,107	\$566,078
TAO	635,023	\$446,189
SLMN	494,362	\$423,618
LIO	628,374	\$420,623
ARTG	87,786	\$401,562
NGEX	57,896	\$399,895
SOMA	868,740	\$398,697
NILI	660,693	\$320,505
ABRA	1,163,841	\$318,208
CYBE	732,945	\$270,272
AFM	265,717	\$249,911
SGD	60,360	\$219,325

Dark TSX/TSXV Trading			
Volume	6,912,970	Daily Trades	33,162
Value	169,284,056	Daily Symbols Traded	1,060