

DAILY REPORT



For more information, email trading_sales@tsx.com

October 18, 2023

Indices	October 18 Close	Previous Close	Change	% Change
S&P/TSX Composite Index	19,450.70	19,692.80		-1.23 %
S&P/TSX 60 Index	1,169.64	1,184.14		-1.23 %
S&P/TSX Venture Composite	525.84	537.92		-2.24 %
S&P/TSX Completion Index	1,155.62	1,170.22		-1.25 %
S&P/TSX Smallcap Index	662.39	669.59		-1.08 %

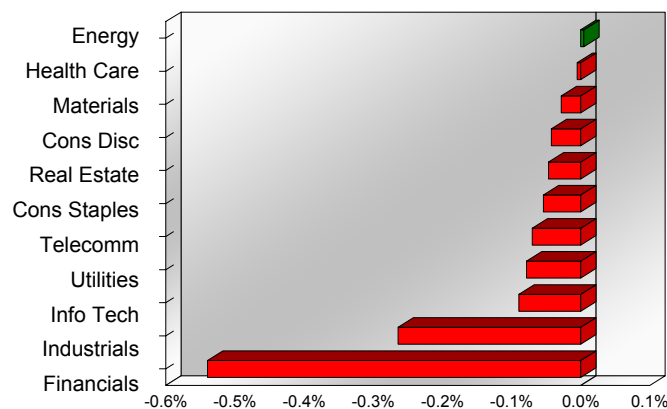
S&P/TSX Composite Index		
Advancers	Decliners	Unchanged
49	176	2

S&P/TSX Composite Index			
Top 10 Index Contributors		Top 10 Index Detractors	
Constituent	Index Contribution	Constituent	Index Contribution
SU	4.21	RY	-18.27
ABX	3.39	TD	-17.12
CVE	2.50	CNR	-16.52
ARX	1.62	BMO	-12.62
CCO	1.49	SHOP	-12.35
CNQ	1.47	BN	-11.64
BTO	1.23	BNS	-10.78
TECK.B	1.11	CP	-9.22
QSR	1.09	CM	-7.62
AEM	0.95	BCE	-6.58

S&P/TSX Composite Index			
Top 10 Advancers		Top 10 Decliners	
Constituent	Return	Constituent	Return
POU	4.50%	LAC	-10.00%
DND	3.35%	DOO	-7.30%
WDO	2.98%	ATS	-5.81%
BTO	2.91%	CIX	-5.53%
LUG	2.01%	TLRY	-5.26%
DML	1.98%	BLDP	-4.96%
BBU.UN	1.90%	CAE	-4.72%
ARX	1.69%	AQN	-4.62%
PXT	1.49%	STN	-4.53%
ELD	1.40%	CS	-4.38%

S&P/TSX Composite Index				
Sector	# of Index Constituents	Weight	Market Cap (\$B)	Index Contribution
Energy	40	19.14 %	\$532.70	0.91
Health Care	4	0.30 %	\$8.32	-0.97
Materials	52	12.13 %	\$337.65	-5.54
Consumer Discretionary	14	3.64 %	\$101.39	-8.33
Real Estate	21	2.28 %	\$63.55	-9.17
Consumer Staples	11	4.33 %	\$120.42	-10.58
Communication Services	5	3.74 %	\$104.11	-13.83
Utilities	15	3.90 %	\$108.69	-15.43
Information Technology	11	7.43 %	\$206.81	-17.57
Industrials	26	13.23 %	\$368.15	-51.97
Financials	28	29.88 %	\$831.80	-106.31
S&P/TSX Composite Index	227	100.00 %	\$2,783.60	-238.78

S&P/TSX Composite Index - Sectors Returns



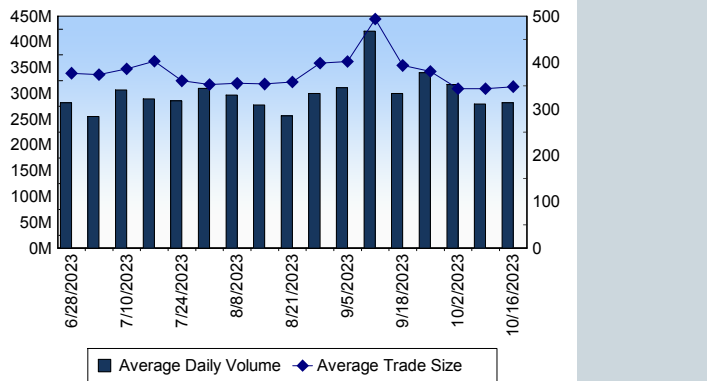
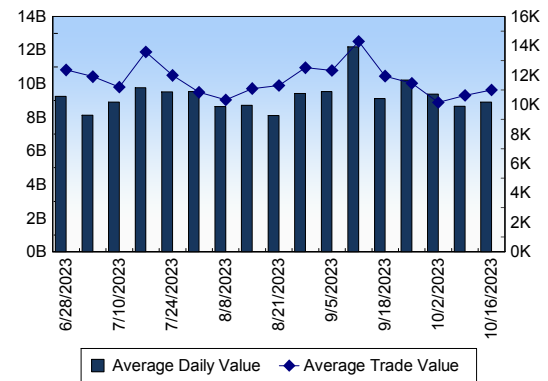
This report is published by TSX Inc. TSX Inc. does not guarantee either the completeness or the accuracy of this information. The information contained in this report is provided for informational purposes only and you agree not to rely upon the information contained in this report for any trading, business or financial purpose. These sheets are printed in Canada and issued by TSX Inc. under the express condition, to which everyone receiving or making use thereof assents, that no liability shall be incurred by TSX Inc. or its affiliated companies or any other vendor or donor, including, without limitation, for reliance on or for any errors or inaccuracies in this report. Neither TMX Group Limited, TSX Inc., nor any of their affiliated companies, guarantees the completeness of the information contained in this document and are not responsible for any errors or omission in or your use of, or reliance on, the information. This publication is under copyright. © 2016 TSX Inc. All rights reserved. Do not copy, distribute, sell or modify this publication without the prior written consent of TSX Inc. <http://www.tsx.com/trading>

TSX

Daily Volume	282,163,394
Daily Value	\$8,496,110,266
Daily Trades	865,451
Daily Symbols Traded	1,996

TSX ANONYMOUS TRADING

Daily Volume	127,437,467
Daily Value	\$3,886,144,864
Average Trade Size	300
% TSX Volume	45.16 %

TSX Volume**TSX Value (in Canadian Dollars)****Top 20 TSX Symbols by Volume**

Symbol	TSX Volume	TSX Value
TRP	8,818,453	\$417,931,494
WEED	7,029,778	\$6,126,405
AQN	6,789,378	\$49,215,045
TOU	5,960,416	\$432,321,768
BTE	5,750,548	\$34,816,488
ENB	5,706,691	\$251,455,566
SHOP	5,530,076	\$406,535,616
RY	4,782,873	\$545,450,016
TD	4,780,545	\$385,243,369
ABX	4,240,769	\$96,093,126
CNQ	3,881,062	\$355,783,981
CVE	3,678,487	\$106,716,833
MOZ	3,642,090	\$1,883,114
SU	3,544,860	\$166,889,737
XIU	3,530,229	\$105,031,047
K	3,506,015	\$25,718,787
ATH	3,431,775	\$14,556,095
BTO	3,312,660	\$15,203,276
AC	3,278,923	\$56,472,585
ARX	3,262,015	\$72,460,240

Top 20 TSX Symbols by Value

Symbol	TSX Volume	TSX Value
RY	4,782,873	\$545,450,016
TOU	5,960,416	\$432,321,768
TRP	8,818,453	\$417,931,494
SHOP	5,530,076	\$406,535,616
TD	4,780,545	\$385,243,369
CNQ	3,881,062	\$355,783,981
ENB	5,706,691	\$251,455,566
BMO	1,597,899	\$175,778,002
SU	3,544,860	\$166,889,737
IMO	1,825,519	\$152,733,654
CNR	1,028,135	\$149,643,782
BNS	2,430,915	\$143,257,610
NA	1,573,942	\$136,995,786
CP	1,392,416	\$136,062,665
CVE	3,678,487	\$106,716,833
XIU	3,530,229	\$105,031,047
CM	2,034,501	\$104,123,637
ABX	4,240,769	\$96,093,126
BN	2,072,331	\$91,150,656
POW	2,513,537	\$86,585,081

ETF Trading

Daily Volume	26,931,430	Average Trade Value	\$13,826
Daily Value	\$614,959,842	Average Trade Size	605
# Trades	44,479	# of ETFs Traded	851

Top 10 ETFs by TSX Volume

Symbol	Market Volume	Market Value
XIU	3,530,229	\$105,031,047
ZEB	1,845,554	\$56,965,130
HNU	1,742,224	\$26,422,914
HQU	1,593,386	\$21,879,448
HSU	862,198	\$13,146,478
HOD	854,033	\$5,766,555
HOU	853,974	\$14,695,143
BTCC.B	764,237	\$4,275,761
HSD	677,094	\$18,227,280
XEG	645,720	\$11,369,948

Top 10 ETFs by TSX Value

Symbol	Market Volume	Market Value
XIU	3,530,229	\$105,031,047
ZEB	1,845,554	\$56,965,130
HNU	1,742,224	\$26,422,914
HQU	1,593,386	\$21,879,448
VFV	183,856	\$19,347,480
HSD	677,094	\$18,227,280
HND	352,103	\$15,295,995
HOU	853,974	\$14,695,143
HSU	862,198	\$13,146,478
ZSP	189,913	\$12,328,681

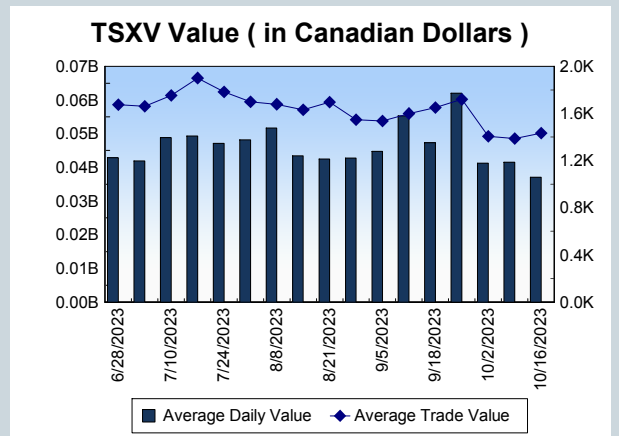
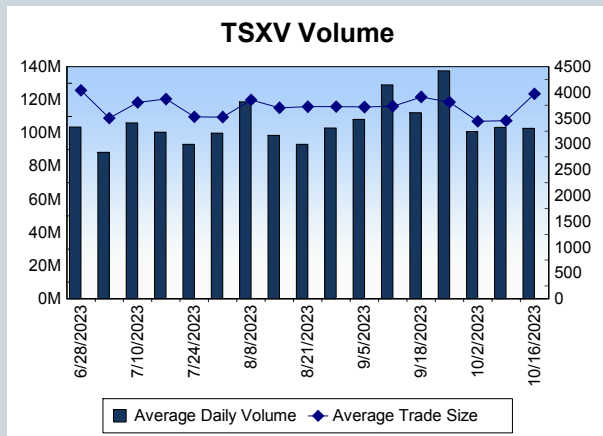
Block Trades	Non Block Trades
969	864,482

Top 5 Block Trade Brokers by Volume	
Broker	TSX Block Volume
BMO NESBITT BURNS INC.	16,958,800
CIBC WORLD MARKETS INC.	11,249,900
RBC CAPITAL MARKETS	11,004,900
GOLDMAN SACHS CANADA I	9,441,444
TD SECURITIES INC.	8,785,044

Top 5 Block Trade Symbols by Volume	
Symbol	TSX Block Volume
TRP	6,457,900
TOU	4,534,500
RY	2,917,200
ENB	2,683,200
TD	2,423,300

TSXV	
Daily Volume	108,788,909
Daily Value	\$39,857,477
Daily Trades	26,115
Daily Symbols Traded	1,051

TSXV ANONYMOUS TRADING	
Daily Volume	54,174,184
Daily Value	\$21,833,689
Average Trade Size	4,294
% TSXV Volume	49.80%



Top 20 TSXV Symbols by Volume		
Symbol	TSXV Volume	TSXV Value
NILI	3,381,344	\$2,845,011
ROCK	3,126,000	\$49,440
LFST	2,318,295	\$34,769
C	2,088,000	\$31,320
FUU	1,967,234	\$712,185
BIG	1,929,034	\$965,932
CLM	1,867,340	\$93,592
AIS	1,699,000	\$8,495
ILI	1,494,250	\$70,998
BWCG	1,488,597	\$355,260
KTN	1,406,299	\$104,047
WRLG	1,245,405	\$751,114
NOC	1,218,090	\$118,993
PNG	1,074,311	\$586,911
NCI	1,000,000	\$30,000
FTEC	811,100	\$26,831
MON	802,332	\$97,545
MAE	782,000	\$31,115
ETL	691,021	\$2,180,889
TBLL	687,000	\$10,305

Top 20 TSXV Symbols by Value		
Symbol	TSXV Volume	TSXV Value
NILI	3,381,344	\$2,845,011
TOI	30,426	\$2,597,998
ETL	691,021	\$2,180,889
PMET	150,753	\$1,618,357
HIVE	354,314	\$1,447,108
ARTG	209,835	\$1,136,903
ABR	662,941	\$1,032,132
BIG	1,929,034	\$965,932
WRLG	1,245,405	\$751,114
FUU	1,967,234	\$712,185
PNRL	441,917	\$684,590
EU	160,207	\$663,563
SLI	140,746	\$640,533
PNG	1,074,311	\$586,911
NFG	87,938	\$515,245
SGML	12,869	\$487,647
LMN	24,348	\$464,952
ATX	548,570	\$414,548
ISO	108,503	\$406,084
CNC	310,579	\$383,118

Dark TSX/TSXV Trading			
Volume	16,950,300	Daily Trades	78,047
Value	548,118,969	Daily Symbols Traded	1,236